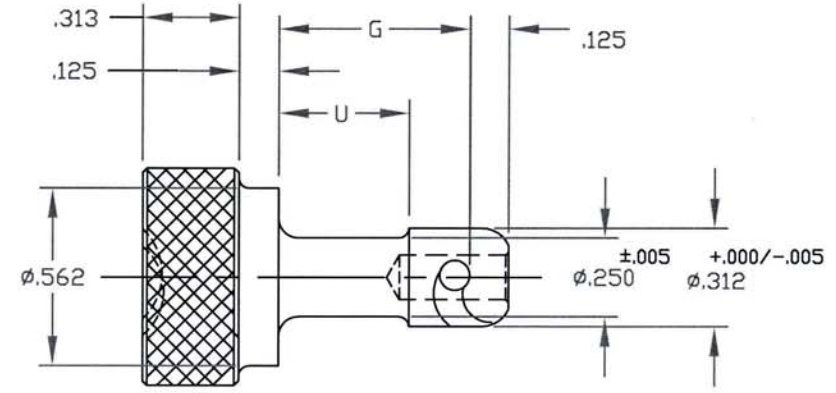
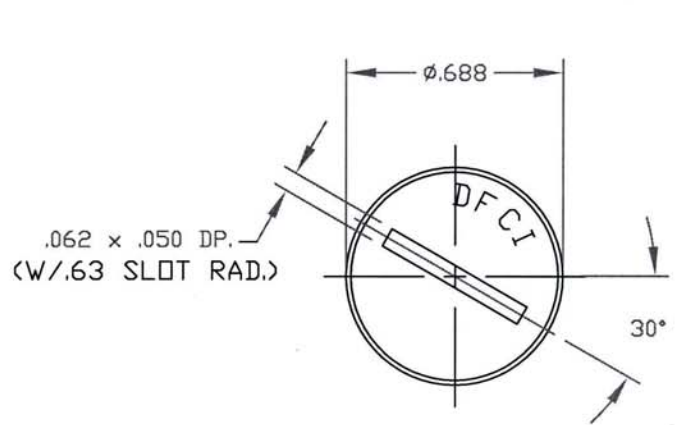


UNCONTROLLED

C1211-5 SHT. 1of2 REV. A ▼

REVISIONS			
SYM	DESCRIPTION	DATE	APPROV
A	INITIAL RELEASE PER ECN 845	9-30-08	R.C.



FOR PART NO. REFER TO SHEET 2of2.

MAT'L PER A.I.S.I 8620, STEEL OR TYPE 303 ST. STEEL.		TOLERANCES ON DIMENSIONS UNLESS OTHERWISE SPECIFIED $X^* = \pm 2^*$.XX = $\pm .015$ $X/X = \pm 1/32$.XXX = $\pm .010$ MACHINE FINISH 125		DFCI SOLUTIONS INC. 425 UNION BOULEVARD WEST ISLIP, NEW YORK 11795	
HEAT TREAT PER NOTE 1.		PART NO.	DRN S. F. R. Ardas	DATE 9-30-08	TITLE ST-1200 KNURL HD. STUD, 1211-5xx-Z3CT.
FINISH PER NOTE 2.		CHECKED F. Basile	DATE 9-30-08	ENG. Andy Johnson	DATE 10-01-08
<small>THE FASTENER PARTS SHOWN IN THIS PRINT ARE PROPRIETARY ARTICLES TO WHICH DFCI SOLUTIONS INC. RETAINS THE EXCLUSIVE RIGHTS OF MANUFACTURE, USE AND SALE. THE PRINT OR DRAWING IS SUBMITTED IN CONFIDENCE AND DOES NOT CONVEY A LICENSE OR PERMISSION TO MANUFACTURE THE FASTENER OR FASTENER PARTS.</small>		MEG. B. W. Hildebrand	DATE 9-30-08	QC. B. Hildebrand	DATE 9-30-08
DATE: 07/01/06 FORM: DRAWING		NEXT ASSY	USED ON	APPLICATION BLOCK	SALES
		SIZE A	FSCM NO 72794	DWG. NO. C1211-5	REV. A
		SCALE NTS	WT.	SHEET 1 OF 2	


UNCONTROLLED

REVISIONS			
SYM	DESCRIPTION	DATE	APPROV
A	INITIAL RELEASE PER ECN 845	9-30-08	R.C.

NOTES:

PART No. (STEEL)	G	U
1211-535-Z3CT	.350	.125
1211-540-Z3CT	.400	
1211-545-Z3CT	.450	.190
1211-550-Z3CT	.500	.250
1211-555-Z3CT	.550	.275
1211-560-Z3CT	.600	.300
1211-565-Z3CT	.650	.350
1211-570-Z3CT	.700	.400
1211-575-Z3CT	.750	.500
1211-580-Z3CT	.800	
1211-585-Z3CT	.850	.600
1211-590-Z3CT	.900	
1211-595-Z3CT	.950	.700
1211-5100-Z3CT	1.000	
1211-5110-Z3CT	1.100	
1211-5120-Z3CT	1.200	
1211-530-Z3CT	1.300	
1211-5140-Z3CT	1.400	

- HEAT TREAT:
A; STEEL STUD HARDNESS = ROCKWELL C27 - 33.
B; NO HEAT TREATMENT TO STUD MADE ST. STEEL.
- FINISH:
ZINC PLATE PER ASTM-B-633, TYPE III, SC 2, CLEAR TRIVALENT CHROMATE WITH SEALER. (ROHS COMPLIANT) FINISH SUFFIX: -Z3CT
THE ABOVE MENTIONED FINISH WILL BE SUPPLIED AS THE STANDARD FINISH, UPON DEPLETION OF EXISTING STOCK WHICH ARE FINISHED AS FOLLOWS: ZINC PLATE PER ASTM-B-633, TYPE III, SC 2, CLEAR CHROMATE. (FINISH SUFFIX: -Z3C)
- FOR PART NO. OF STUD MADE FROM ST. STEEL, REMOVE SUFFIX -Z3CT FROM P/N AND ADD "-SS" EXAMPLE 1211-535-SS.
- FOR THE APPLICATION OF ALTERNATIVE FINISHES, REMOVE SUFFIX -Z3CT FROM THE PART NO. AND ADD THE REQUIRED FINISH TO THE SUFFIX.
*EXAMPLE FOR YELLOW ZINC TRIVALENT CHROMATE FINISH, THE PART NO. IS 1211-535-Z3YT.
- PLEASE VISIT WWW.DFCIS.COM/C1211-5 FOR A LIST OF AVAILABLE FINISHES.

MAT'L PER A.I.S.I 8620, STEEL OR TYPE 303 ST. STEEL.		TOLERANCES ON DIMENSIONS UNLESS OTHERWISE SPECIFIED X = ±2* .XX = ±.015 X/X = ±1/32 .XXX = ±.010 MACHINE FINISH 125T		 DFCI SOLUTIONS INC. 425 UNION BOULEVARD WEST ISLIP, NEW YORK 11795	
HEAT TREAT PER NOTE 1.		PART NO.	DRN S. Francis DATE 9-30-08	TITLE ST-1200 KNURL HD. STUD, 1211-5xx-Z3CT.	
FINISH PER NOTE 2.			CHK F. Basile DATE 9-30-08	SIZE A	FSCM NO 72794
<small>THE FASTENER PARTS SHOWN IN THIS PRINT ARE PROPRIETARY ARTICLES TO WHICH DFCI SOLUTIONS INC. RETAINS THE EXCLUSIVE RIGHTS OF MANUFACTURE, USE AND SALE. THE PRINT OR DRAWING IS SUBMITTED IN CONFIDENCE AND DOES NOT CONVEY A LICENSE OR PERMISSION TO MANUFACTURE THE FASTENER OR FASTENER PARTS. © COPYRIGHT 2008, DFCI SOLUTIONS INC. ALL RIGHTS RESERVED.</small>		NEXT ASSY	USED ON	DATE 10-1-08	DWG. NO. C1211-5
		APPLICATION BLOCK	SALES	DATE 9/30/08	REV. A
DATE: 07/01/06 FORM: DRAWING				SCALE NTS	WT.
				SHEET 2 OF 2	