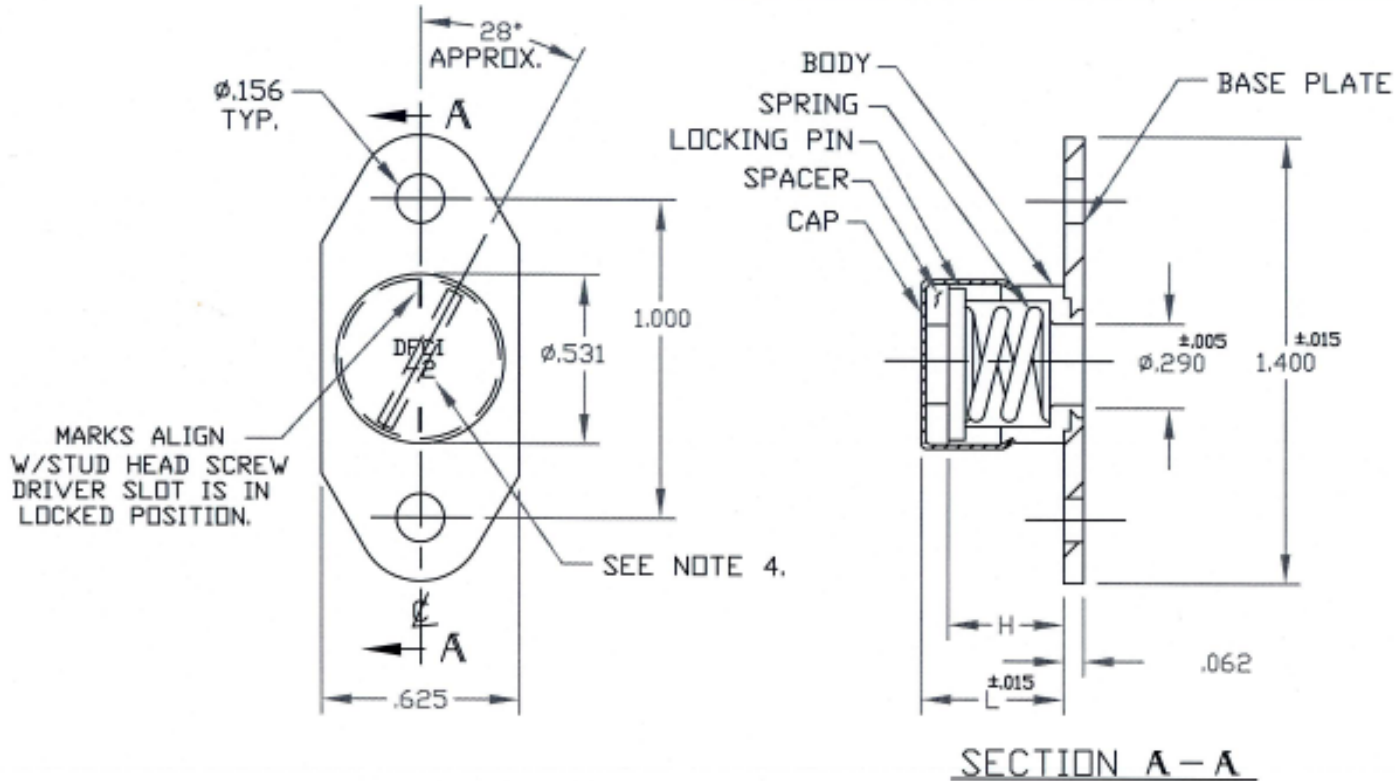



UNCONTROLLED

C1219-PSP4 SHT. 1 of 2 REV. C

REVISIONS			
SYM	DESCRIPTION	DATE	APPROV
C	CHNG FINISH PER ECN 1011	1-2-07	R. OLSEN



FOR PART NO. REFER TO SHEET 2 of 2.

MATL PER NOTE 3.	TOLERANCES ON DIMENSIONS UNLESS OTHERWISE SPECIFIED X* = ±.2    .XX = ±.015 X/X = ±1/32    .XXX = ±.010    MACHINE FINISH 125T		 <b>DFCI SOLUTIONS INC.</b> 425 UNION BOULEVARD WEST ISLIP, NEW YORK 11795	
HEAT TREAT PER NOTE 3.	PART NO.	DRN S. F. Rawas	DATE 3-22-04	<b>ST-1200 RECEPTCLE ASSY.</b> <b>1219-PSP4-x-Z3CT.</b>
FINISH PER NOTE 1.		CHK F. Basik	DATE 1-3-07	
		ENG R. OLSEN	DATE 1-3-07	SIZE A
		MFG JS	DATE 1-3-07	FSCM NO 72794
	NEXT ASSY	USED ON	QC B. Hildner	DATE 1/3/07
			SALES	DATE
<small>THE FASTENER PARTS SHOWN IN THIS PRINT ARE PROPRIETARY ARTICLES TO WHICH DFCE SOLUTIONS INC. RETAINS THE EXCLUSIVE RIGHTS OF MANUFACTURE, USE AND SALE. THE PRINT OR DRAWING IS SUBMITTED IN CONFIDENCE AND DOES NOT CONVEY A LICENSE OR PERMISSION TO MANUFACTURE THE PARTS OF FASTENER PARTS.</small> <small>© COPYRIGHT 2004, DFCE SOLUTIONS INC. ALL RIGHTS RESERVED.</small>		APPLICATION BLOCK		DWG. NO. C1219-PSP4
DATE: 07/01/06    FORM: DRAWING		SCALE NTS		WT. SHEET 1 OF 2

UNCONTROLLED

REVISIONS			
SYM	DESCRIPTION	DATE	APPROV
C	CHNG FINISH PER ECN 1011.	1-2-07	R. OLSON

NOTES:

1. FINISH: BODY & SPACER.

ZINC PLATE PER ASTM-B-633, TYPE III, SC 2, CLEAR TRIVALENT CHROMATE WITH SEALER. (RoHS COMPLIANT) FINISH SUFFIX: -Z3CT  
 THE ABOVE MENTIONED FINISH WILL BE SUPPLIED AS THE STANDARD FINISH, UPON DEPLETION OF EXISTING STOCK WHICH ARE FINISHED AS FOLLOWS: ZINC PLATE PER ASTM-B-633, TYPE III, SC 2, CLEAR CHROMATE. FINISH SUFFIX -Z3C.

2. FOR THE APPLICATION OF ALTERNATIVE FINISHES, REMOVE SUFFIX -Z3CT FROM THE PART NO. AND ADD THE REQUIRED FINISH TO THE PART NO. SUFFIX. \*EXAMPLE FOR BLACK ZINC TRIVALENT CHROMATE FINISH, THE PART NO. IS 1219-PSP4-1-Z3BT.


3. MATERIALS:

CAP - 300 SERIES STAINLESS  
 SPRING - STAINLESS STEEL 17-7 PH SPRING TEMPER  
 PIN - STAINLESS STEEL 17-7 PH SPRING TEMPER  
 SPACER: 8620 STEEL, HEAT TREATED.  
 BODY: 11L17 STEEL, HEAT TREATED.  
 BASE PLATE: ALUM. ALLOY 2024-T6.

PART NO.	DIM H	DIM L
1219-PSP4-1-Z3CT	.365	.490
1219-PSP4-2-Z3CT	.390	.515

4. (-1) DESIGNATE PART NO. 1219-PSP4-1-Z3CT OR (-2) FOR PART NO. 1219-PSP4-2-Z3CT.

5. PLEASE VISIT WWW.DFCIS.COM/C1219-PSP4 FOR A LIST OF AVAILABLE FINISHES.

MATL PER NOTE 2.	TOLERANCES ON DIMENSIONS UNLESS OTHERWISE SPECIFIED X* = ±2* .XX = ±.015 X/X = ±1/32 .XXX = ±.010		MACHINE FINISH 125T		 <b>DFCI SOLUTIONS INC.</b> 425 UNION BOULEVARD WEST ISLIP, NEW YORK 11795
HEAT TREAT PER NOTE 2.	PART NO.	DRN S. FRANCOIS	DATE 3-22-04	ST-1200 PRESS-IN RCPTCLE. 1219-PSP4-x-Z3CT.	
FINISH PER NOTE 1.		CHK F. BOSCH	DATE 1-3-07	SIZE A	FSCM NO 72794
<small>THE FASTENER PARTS SHOWN IN THIS PRINT ARE PROPRIETARY ARTICLES TO WHICH DFCI SOLUTIONS INC. RETAINS THE EXCLUSIVE RIGHTS OF MANUFACTURE, USE AND SALE. THE PRINT OR DRAWING IS SUBMITTED IN CONFIDENCE AND DOES NOT CONVEY A LICENSE OR PERMISSION TO MANUFACTURE THE FASTENER OR FASTENER PARTS.                  © COPYRIGHT 2007, DFCI SOLUTIONS INC. ALL RIGHTS RESERVED.</small>	NEXT ASSY	USED ON	QC B. HILDEBRAND	DATE 1-3-07	DWG. NO. C1219-PSP4
	APPLICATION BLOCK	SALES	DATE	SCALE NTS	WT.
DATE: 07/01/06	FORM: DRAWING			SHEET 2 OF 2	