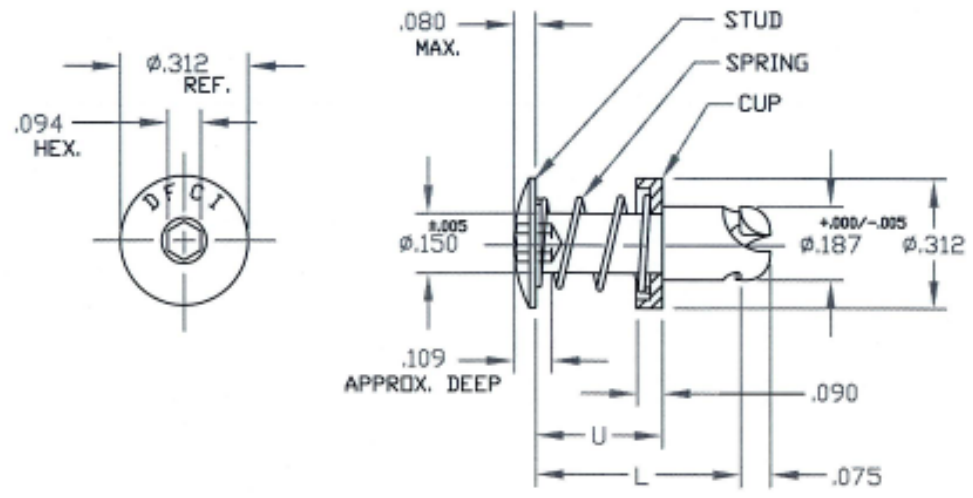



UNCONTROLLED

REVISIONS			
SYM	DESCRIPTION	DATE	APPROV
A	INITIAL RELEASE PER ECN 845	2-12-08	R. OLSSON



FOR PART NO. & NOTES REFER TO SHEET 2 of 2.

MAT'L PER NOTE 1.	TOLERANCES ON DIMENSIONS UNLESS OTHERWISE SPECIFIED X° = ±2° .XX = ±.015 X/X = ±1/32 .XXX = ±.010 MACHINE FINISH 125T		 <b>DFCI SOLUTIONS INC.</b> 425 UNION BOULEVARD WEST ISLIP, NEW YORK 11795	
HEAT TREAT PER NOTE 2.	PART NO.	DRN S. FRANCIS	DATE 2-12-08	<b>ST-1200 SELF EJECT STUD</b> <b>121J-H3xx-SE-Z3CT.</b>
FINISH PER NOTE 3.		CHK F. Basil	DATE 2-13-08	
		ENG R. OLSSON	DATE 2/13/08	SIZE A
		MFG P. Hildebrand	DATE 2/13/08	FSCM NO 72794
	NEXT ASSY	USED ON	DATE 2/13/08	DWG. NO. C121J-H3SE
	APPLICATION BLOCK		SALES	REV. A
			DATE	SCALE NTS
				WT.
				SHEET 1 OF 2

UNCONTROLLED


REVISIONS			
SYM	DESCRIPTION	DATE	APPROV
A	INITIAL RELEASE PER ECN 845	2-12-08	<i>R. O. Basil</i>

NOTES:

- MATERIAL:  
 STUD: PER A.I.S.I 8620, STEEL OR TYPE 303 ST. STEEL.  
 SPRING: ST. STEEL, TYPE 17-7.  
 CUP: ACETAL CELCON.
- HEAT TREAT: ROCKWELL C30 - 38. (STEEL STUD ONLY)  
 STAINLESS STEEL STUD IS NOT HEAT TREATED.
- FINISH STUD ONLY:  
 ZINC PLATE PER ASTM-B-633, TYPE III, SC 2, CLEAR TRIVALENT CHROMATE WITH SEALER. (ROHS COMPLIANT) FINISH SUFFIX: -Z3CT  
 THE ABOVE MENTIONED FINISH WILL BE SUPPLIED AS THE STANDARD FINISH, UPON DEPLETION OF EXISTING STOCK WHICH ARE FINISHED AS FOLLOWS: ZINC PLATE PER ASTM-B-633, TYPE III, SC 2, CLEAR CHROMATE. FINISH SUFFIX -Z3C.
- SELF EJECTING OPTION IS NOT RECOMMENDED FOR USE ON STUD WITH UNDERCUT ( U ) DIMENSION LESS THAN .250
- PART NO. FOR STUD ASSY. MADE OF STAINLESS STEEL, TYPE 303, REMOVE -Z3CT & ADD 'SS' TO THE PART NO. \*EXAMPLE 121J-H350-SE-SS.
- FOR THE APPLICATION OF ALTERNATIVE FINISHES, REMOVE SUFFIX -Z3CT FROM THE PART NO. AND ADD THE REQUIRED FINISH TO THE PART NO. SUFFIX. \*EXAMPLE FOR BLACK ZINC TRIVALENT CHROMATE FINISH, THE PART NO. IS 121J-H350-SE-Z3BT.
- PLEASE VISIT WWW.DFCIS.COM/C121J-H3SE FOR A LIST OF AVAILABLE FINISHES.

PART NO. (STEEL STUD ASSY.)	L	U
121J-H340-SE-Z3CT	.400	.200
121J-H350-SE-Z3CT	.500	.250
121J-H355-SE-Z3CT	.550	.275
121J-H360-SE-Z3CT	.600	.300
121J-H365-SE-Z3CT	.650	.350
121J-H370-SE-Z3CT	.700	
121J-H375-SE-Z3CT	.750	.400
121J-H380-SE-Z3CT	.800	
121J-H390-SE-Z3CT	.900	.500
121J-H3100-SE-Z3CT	1.000	

( SEE NOTE 4 )

MATL PER NOTE 1.	TOLERANCES ON DIMENSIONS UNLESS OTHERWISE SPECIFIED X = ±2* .XX = ±.015 X/X = ±1/32 .XXX = ±.010 MACHINE FINISH 125/		 <b>DFCI SOLUTIONS INC.</b> 425 UNION BOULEVARD WEST ISLIP, NEW YORK 11795	
HEAT TREAT PER NOTE 2.	PART NO.	DRN <i>S. F. Basil</i>	DATE 2-12-08	<b>ST-1200 SELF EJECT STUD</b> <b>121J-H3xx-SE-Z3CT.</b>
FINISH PER NOTE 3.		CHK <i>F. Basil</i>	DATE 2-13-08	
		ENG <i>R. O. Basil</i>	DATE 2/13/08	
		MFG <i>B. H. Kelly</i>	DATE 2/13/08	
THE PARTS SHOWN ON THIS PRINT ARE PROPRIETARY ARTICLES TO WHICH DFCI SOLUTIONS INC. RETAINS THE EXCLUSIVE RIGHTS OF MANUFACTURE, USE AND SALE. THE PRINT OR DRAWING IS SUBMITTED IN CONFIDENCE AND DOES NOT CONVEY A LICENSE OR PERMISSION TO MANUFACTURE THE PARTS OR PARTS THEREOF. © COPYRIGHT 2003, DFCI SOLUTIONS INC. ALL RIGHTS RESERVED.	NEXT ASSY	USED ON	DATE	SIZE A FSCM NO. <b>72794</b> DWG. NO. <b>C121J-H3SE</b> REV. <b>A</b>
APPLICATION BLOCK		SALES	DATE	SCALE NTS WT. SHEET 2 OF 2

DATE: 07/01/08 FORM: DRAWING