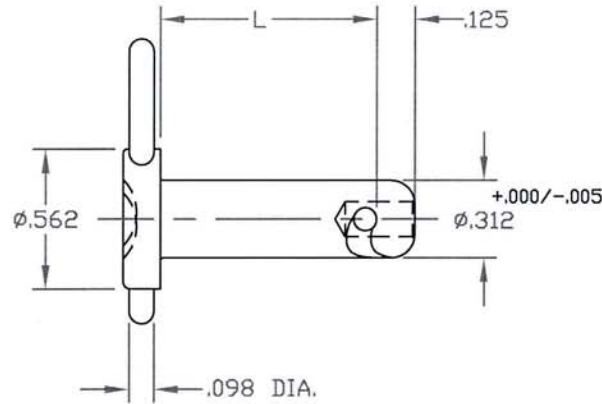
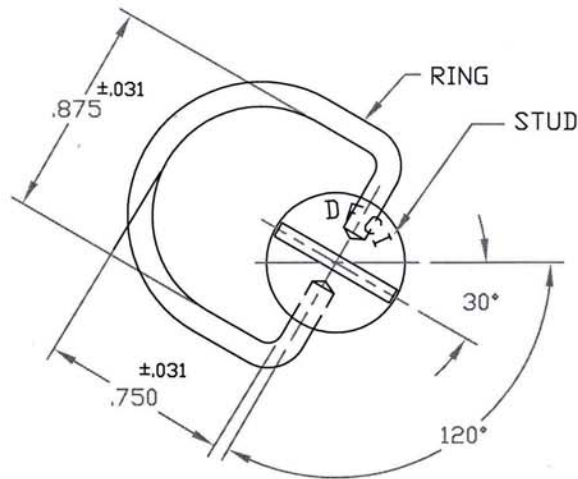



UNCONTROLLED

C1225-R5-241700 REV. *B*

REVISIONS			
SYM	DESCRIPTION	DATE	APPROV
B	ADD 302 SS PER ECN 1091	6-24-08	R.C.



PART NO.	L DIM.	MATERIAL		HEAT TREATMENT:
		STUD	RING	
1225-R590-241700-SS	.900	TYPE 302 OR 303 STAINLESS STEEL.	TYPE 420 STAINLESS STEEL.	STUD = NONE RING = ROCKWELL C40 - 45.
1225-R5100-241700-SS	1.000			

MAT'L AS NOTED.	TOLERANCES ON DIMENSIONS UNLESS OTHERWISE SPECIFIED X° = ±2° .XX = ±.015 X/X = ±1/32 .XXX = ±.010 MACHINE FINISH 125/			 DFCI SOLUTIONS INC. 425 UNION BOULEVARD WEST ISLIP, NEW YORK 11795	
HEAT TREAT AS NOTED.	PART NO.	DRN <i>S. F. Anwar</i>	DATE 3-26-04	TITLE 1200 RING HD. STUD ASSY.	
FINISH CLEAN & FREE OF BURRS		CHK <i>Marie</i>	DATE 8-18-08	PART NO. 1225-R5xx-241700-SS	
<small>THE FASTENER PARTS SHOWN IN THIS PRINT ARE PROPRIETARY ARTICLES TO WHICH DFCI SOLUTIONS INC. RETAINS THE EXCLUSIVE RIGHTS OF MANUFACTURE, USE AND SALE. THE PRINT OR DRAWING IS SUBMITTED IN CONFIDENCE AND DOES NOT CONVEY A LICENSE OR PERMISSION TO MANUFACTURE THE FASTENER OR FASTENER PARTS. © COPYRIGHT 2003, DFCI SOLUTIONS INC. ALL RIGHTS RESERVED. DATE: 07/01/06 FORM: DRAWING</small>	NEXT ASSY	USED ON	DATE 8-18-08	SIZE A	FSCM NO 72794
	APPLICATION BLOCK	SALES	DATE 8/18/08	DWG. NO. C1225-R5-241700	REV. B
				SCALE NTS	WT.

The parts shown in this print are proprietary articles to which DFCI Solutions, Inc. retains the exclusive rights of manufacture, use and sale. The print or drawing is submitted in confidence and does not convey a license or permission to manufacture the parts. Copyright © 2008 by DFCI Solutions, Inc. All rights reserved.