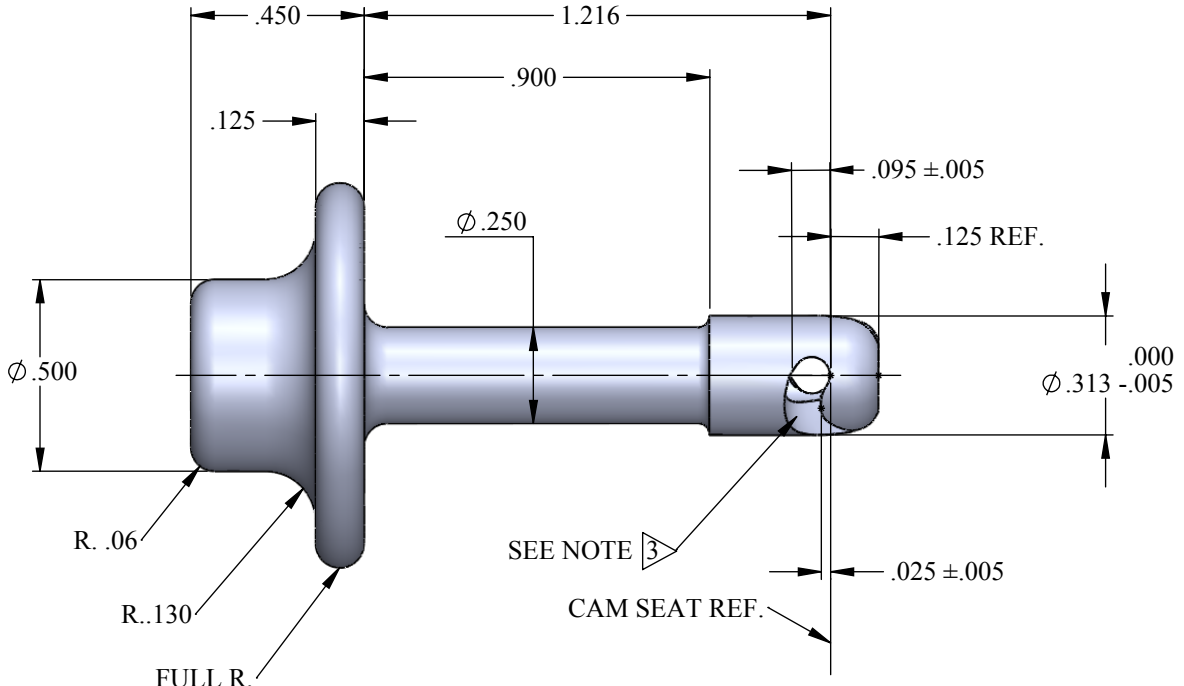
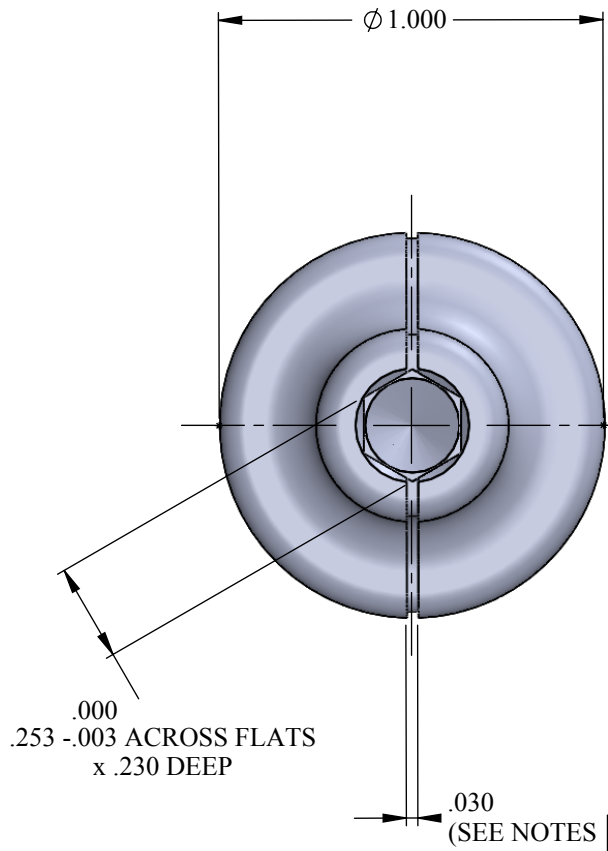
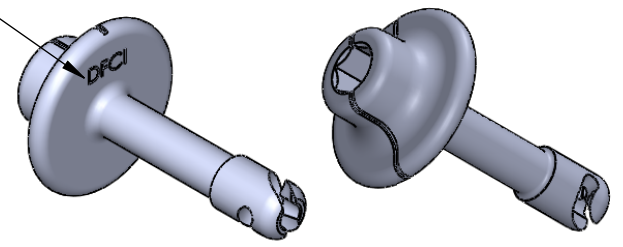


REVISIONS			
SYS	DESCRIPTION	DATE	APPROV
A	PER ECN 845 & 1168	06-07-12	




STAMP LOGO APPROX. WHERE SHOWN.



UNCONTROLLED

MATERIAL:	TYPE 303 STAINLESS STEEL
HEAT TREAT:	PASSIVATE PER QQ-P-35 TYPE 2
FINISH:	NONE
THE FASTENER PARTS SHOWN IN THIS PRINT ARE PROPRIETARY ARTICLES TO WHICH DFCI SOLUTIONS INC., RETAINS THE EXCLUSIVE RIGHTS OF MANUFACTURE, USE AND SALE. THE PRINT OR DRAWING IS SUBMITTED IN CONFIDENCE AND DOES NOT CONVEY A LICENSE OR PERMISSION TO MANUFACTURE THE FASTENER OR FASTENER PARTS. (C) COPYRIGHT 2009, DFCI SOLUTIONS INC. ALL RIGHTS RESERVED.	

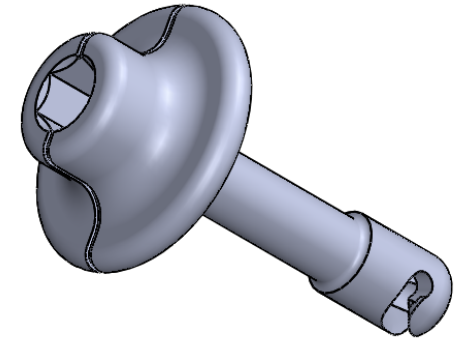
TOLERANCES ON DIMENSIONS UNLESS OTHERWISE SPECIFIED			
X* = ±2*	.XX = ±.015	MACHINE FINISH = 125/	
X/X = ±1/32	.XXX = ±.010		
PART NO.	DRN	DATE	
1228-H5121-241714-SS	Frank Basile	06-07-12	
	CHK.	DATE	
	Frank Basile	06-07-12	
	ENG.	DATE	
	Robert Alldread	06-07-12	
	MFG.	DATE	
	Rashad Lubman	06-07-12	
	G.C.	DATE	
	Robert Alldread	06-07-12	
NEXT ASSY	USED ON	SALES.	DATE
APPLICATION BLOCK			

		DFCI SOLUTIONS INC. 425 UNION BOULEVARD. WEST ISLIP, NEW YORK 11795	
TITLE			
ST-1200 HEX RECESS STUD 1228-H5121-241714-SS			
SIZE	FSCM NO.	DWG. NO.	REV.
A	72794	C1228-H5-241714	A
SCALE: NTS		WEIGHT:	SHEET 1 OF 2


REVISIONS			
SYS	DESCRIPTION	DATE	APPROV
A	PER ECN 845 & 1168	06-07-12	

NOTES: UNLESS OTHERWISE SPECIFIED

1. REMOVE ALL BURRS & BREAK SHARP CORNERS.
2. ALL CORNERS & FILLETS .005 MAX.
3. MACHINE #5 DFCI CAM. BREAK ALL CAM EDGES BY .020 INCHES
4. ENGAGEMENT MARK TYPICAL DEPTH OF .015 INCHES AND A TYPICAL WIDTH OF .030 INCHES. 90° DEGREES +/- 2° DEGREES FROM CAM SEAT.
5. COMPLETELY HAND DEBURR ALL OVER AFTER FINAL OPERATION (ENGAGEMENT MARK) IS COMPLETE.
6. PENETRANT INSPECT FINISH MACHINE SURFACE PER MIL-STD-6866 TYPE 1, SENSITIVITY LEVEL 3 TO REQUIREMENT OF MIL-STD-1907 GRADE A. ETCH PER BAC5423 PRIOR TO PENETRANT INSPECTION.
7. BEAD BLAST AFTER PARTS ARE SENT OUT NOTE 6 PENETRANT INSPECT AND ETCH.
8. COAT WITH M-O-N CAT A, BLACK INK CAGE CODE 12405
9. SLOT TO HEX ORIENTATION AS SHOWN.



UNCONTROLLED

MATERIAL: TYPE 303 STAINLESS STEEL	TOLERANCES ON DIMENSIONS UNLESS OTHERWISE SPECIFIED X* = ±2° .XX = ±.015 X/X = ±1/32 .XXX = ±.010 MACHINE FINISH = .125			 DFCI SOLUTIONS INC. 425 UNION BOULEVARD. WEST ISLIP, NEW YORK 11795
HEAT TREAT: NONE	PART NO. 1228-H5121-241714-SS	DRN. <i>Frank Basile</i> 06-07-12	DATE 06-07-12	
FINISH: NONE		CHK. <i>Frank Basile</i> 06-07-12	DATE 06-07-12	
<small>THE FASTENER PARTS SHOWN IN THIS PRINT ARE PROPRIETARY ARTICLES TO WHICH DFCI SOLUTIONS INC., RETAINS THE EXCLUSIVE RIGHTS OF MANUFACTURE, USE AND SALE. THE PRINT OR DRAWING IS SUBMITTED IN CONFIDENCE AND DOES NOT CONVEY A LICENSE OR PERMISSION TO MANUFACTURE THE FASTENER OR FASTENER PARTS.</small> (C) COPYRIGHT 2009, DFCI SOLUTIONS INC. ALL RIGHTS RESERVED.		ENG. <i>Robert Alldredge</i> 06-07-12	DATE 06-07-12	
		MFG. <i>Rashid Lubman</i> 06-07-12	DATE 06-07-12	
		G.C. <i>Robert Alldredge</i> 06-07-12	DATE 06-07-12	
	NEXT ASSY	USED ON	SALES.	TITLE: ST-1200 HEX RECESS STUD 1228-H5121-241714-SS SIZE: A FSCM NO: 72794 DWG. NO: C1228-H5-241714 REV. A SCALE: NTS WEIGHT: SHEET 2 OF 2