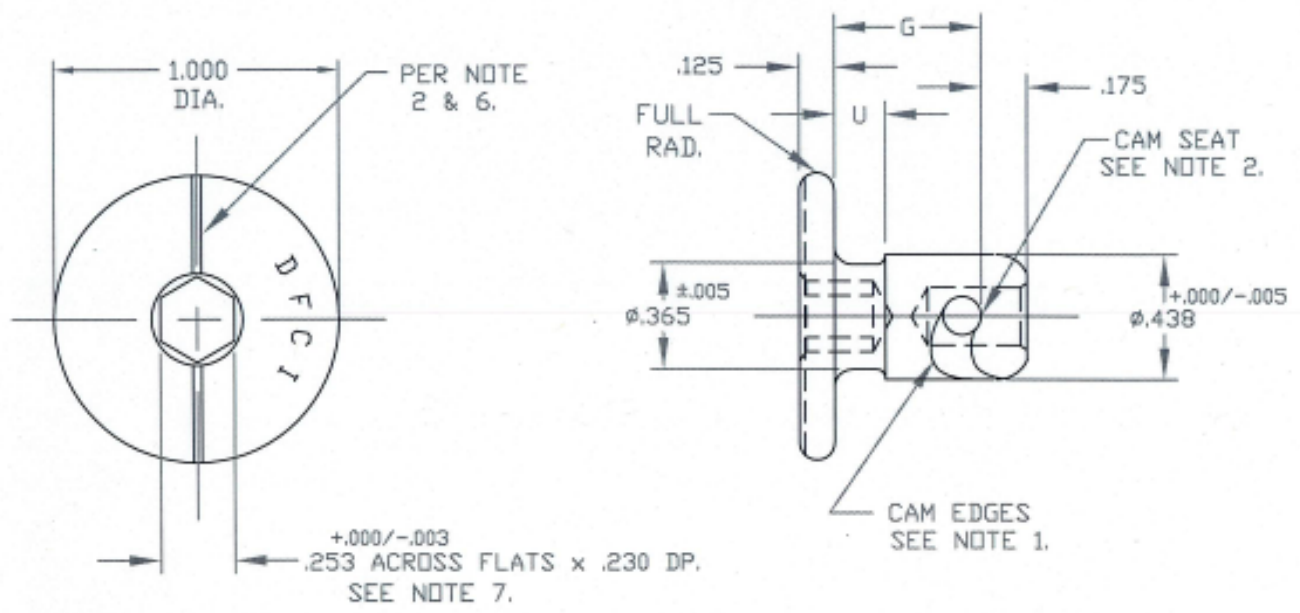


UNCONTROLLED

C1228-H7-241715 SHT. 1 of 2 REV. C

| REVISIONS |                              |          |           |
|-----------|------------------------------|----------|-----------|
| SYM       | DESCRIPTION                  | DATE     | APPROV    |
| C         | ADD SHEET 2 of 2 PER ECN 995 | 10-26-06 | R. OLSSON |



FOR PART NO. REFER TO SHT. 2 of 2.

|  |   |                          |   |   |                                    |
|--|---|--------------------------|---|---|------------------------------------|
| MAT'L<br><b>AS NOTED.</b>  | TOLERANCES ON DIMENSIONS UNLESS OTHERWISE SPECIFIED<br>X° = ±2° .XX = ±.015<br>X/X = ±1/32 .XXX = ±.010 MACHINE FINISH 125T |                          | <b>DFCI SOLUTIONS INC.</b><br>425 UNION BOULEVARD<br>WEST ISLIP, NEW YORK 11795 |   |                                    |
| HEAT TREAT<br><b>NONE.</b>   | PART NO.  | DRN<br><i>S. Frawley</i> | DATE<br>11-24-03  | TITLE<br><b>ST-1200 LINE STUD,<br/>1228-H7xx-241715</b> |                                    |
| FINISH<br><b>PASSIVATE PER<br/>QQ-35, TYPE 2.</b>  |   | CHK<br><i>F. Basil</i>   | DATE<br>10-27-06  | SIZE<br><b>A</b>  |                                    |
| <small>THE FASTENER PARTS SHOWN IN THIS PRINT ARE PROPRIETARY ARTICLES TO WHICH DFCI SOLUTIONS INC. RETAINS THE EXCLUSIVE RIGHTS OF MANUFACTURE, USE AND SALE. THE PRINT OR DRAWING IS SUBMITTED IN CONFIDENCE AND DOES NOT CONVEY A LICENSE OR PERMISSION TO MANUFACTURE THE FASTENER OR FASTENER PARTS.<br/>© COPYRIGHT 2003, DFCI SOLUTIONS INC. ALL RIGHTS RESERVED.</small> |   | ENG<br><i>R. OLSSON</i>  | DATE<br>10/27/06  | FSCM NO<br><b>72794</b>                                 |                                    |
|  | NEXT ASSY   | USED ON                  | QC<br><i>B. Wilson</i>  | DATE<br>10/27/06  | DWG. NO.<br><b>C1228-H7-241715</b> |
|  | APPLICATION BLOCK   | SALES                    | DATE  | SCALE<br>NTS  | WT.                                |
| DATE: 07/01/06   | FORM: DRAWING   |                          |   |   | SHEET<br><b>1 OF 2</b>             |

The parts shown in this print are proprietary articles to which DFCI Solutions, Inc. retains the exclusive rights of manufacture, use and sale. The print or drawing is submitted in confidence and does not convey a license or permission to manufacture the parts. Copyright © 2007 by DFCI Solutions, Inc. All rights reserved.


UNCONTROLLED

| REVISIONS |                            |          |                   |
|-----------|----------------------------|----------|-------------------|
| SYM       | DESCRIPTION                | DATE     | APPROV            |
| C         | ADD SHEET 2of2 PER ECN 995 | 10-26-06 | <i>R. OLESSEN</i> |

NOTES:

1. BREAK ALL CAM EDGES BY .020"
2. ENGAGEMENT MARK.TYPICAL DEPTH OF .015 INCHES AND A TYPICAL WIDTH OF .03 INCHES. 90 DEGREES +/- 2 DEGREES FROM CAM SEAT.
3. COMPLETE HAND DEBURR ALL OVER AFTER FINAL OPERATION (ENGAGEMENT MARK) IS COMPLETE.
4. PENETRANT INSPECT FINISH MACHINE SURFACE PER MIL-STD-6866 TYPE 1, SENSITIVITY LEVEL 3 ,TO REQUIREMENT OF MIL-STD-1907 GRADE A. ETCH PER BAC5423 PRIOR TO PENETRANT INSPECTION. EXTERIOR SURFACES ONLY. DISREGARD HEX RECESS AND CAM HOLE.
5. BEAD BLAST AFTER PARTS ARE SENT OUT NOTE 6 PENETRANT INSPECT AND ETCH.
6. COAT WITH M-D-N/ CAT A, BLACK INK CAGE CODE 12405
7. SLOT TO HEX. ORIENTATION AS SHOWN.

| PART NO.          | G    | U    | MATERIAL                    |
|-------------------|------|------|-----------------------------|
| 1228-H745-241715  | .457 | .145 | TYPE 303<br>STAINLESS STEEL |
| 1228-H749-241715  | .498 | .216 |                             |
| 1228-H752-241715  | .528 | .231 |                             |
| 1228-H753-241715  | .558 | .236 |                             |
| 1228-H790-241715  | .900 | .550 |                             |
| 1228-H745-241715A | .457 | .145 | TYPE 316<br>STAINLESS STEEL |
| 1228-H749-241715A | .498 | .216 |                             |
| 1228-H752-241715A | .528 | .231 |                             |
| 1228-H753-241715A | .558 | .236 |                             |
| 1228-H790-241715A | .900 | .550 |                             |

|   |  |   |   |   |                         |
|---|--|---|---|---|-------------------------|
| MAT'L<br><b>AS NOTED.</b>   |  | TOLERANCES ON DIMENSIONS UNLESS OTHERWISE SPECIFIED<br>X* = ±2* .XX = ±.015<br>X/X = ±1/32 .XXX = ±.010 MACHINE FINISH 125T |   |  <b>DFCI SOLUTIONS INC.</b><br>425 UNION BOULEVARD<br>WEST ISLIP, NEW YORK 11795 |                         |
| HEAT TREAT<br><b>NONE.</b>  |  | PART NO.  | DRN<br><i>S. FRANK</i> DATE 11-24-03      | TITLE<br><b>ST-1200 LINE STUD,<br/>1228-H7xx-241715</b>   |                         |
| FINISH<br><b>PASSIVATE PER<br/>QQ-35, TYPE 2.</b>   |  |   | CHK<br><i>F. Basil</i> DATE 10-27-06      | SIZE<br><b>A</b>  | FSCM NO<br><b>72794</b> |
| <small>THE FASTENER PARTS SHOWN IN THIS PRINT ARE PROPRIETARY ARTICLES TO WHICH DFCI SOLUTIONS INC. RETAINS THE EXCLUSIVE RIGHTS OF MANUFACTURE, USE AND SALE. THE PRINT OR DRAWING IS SUBMITTED IN CONFIDENCE AND DOES NOT CONVEY A LICENSE OR PERMISSION TO MANUFACTURE THE PARTS OR FASTENER PARTS.</small><br><small>© COPYRIGHT 2003, DFCI SOLUTIONS INC. ALL RIGHTS RESERVED.</small> |  |   | ENG<br><i>R. OLESSEN</i> DATE 10/27/06    | DWG. NO.<br><b>C1228-H7-241715</b>  | REV.<br><b>C</b>        |
|   |  | NEXT ASSY   | USED ON<br><i>B. Halder</i> DATE 10/27/06 | SCALE<br><b>NTS</b>   | WT.                     |
|   |  | APPLICATION BLOCK   |   |   |                         |

DATE: 07/01/06 FORM: DRAWING