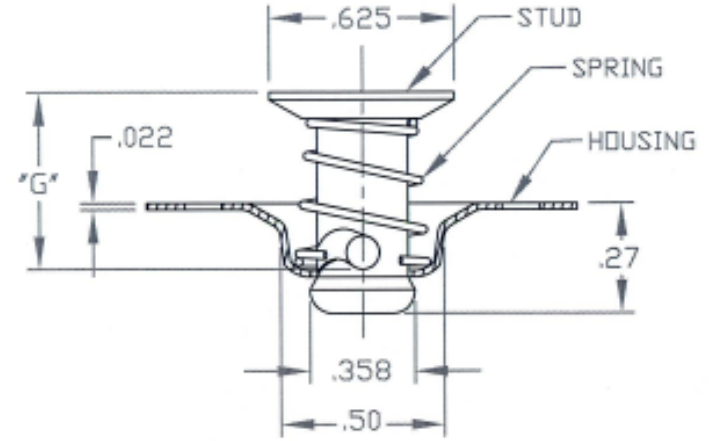
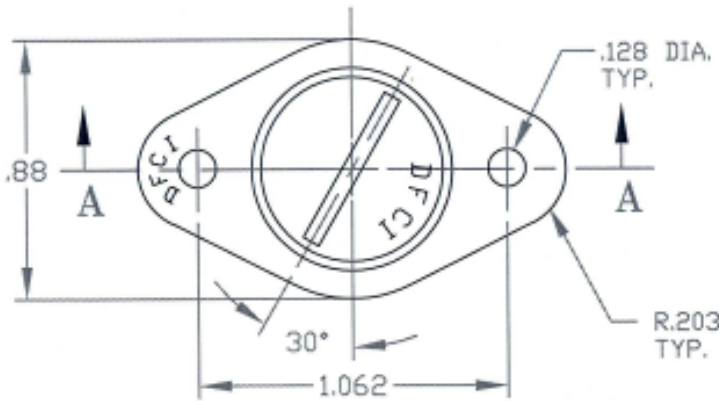


UNCONTROLLED

C1258-F5 SHT. 1 of 2 REV. B

REVISIONS			
SYM	DESCRIPTION	DATE	APPROV
B	CHNG FINSH,ADD SHT2,ECN 1001	11-21-6	R. OLSON



SECTION A-A  
UN-LOCKED POSITION

FOR PART NO. SEE SHEET 2 of 2.

MATERIAL PER NOTE 1.		TOLERANCES ON DIMENSIONS UNLESS OTHERWISE SPECIFIED X° = ±2° .XX = ±.015 X/X = ±1/32 .XXX = ±.010		MACHINE FINISH 125T		DFCI SOLUTIONS INC. 425 UNION BOULEVARD WEST ISLIP, NEW YORK 11795	
HEAT TREAT STUD=ROCKWELL C27-33.		PART NO.	DRN S. F. Francis	DATE 4-21-04	ST-1200 EJECT STUD ASSY. 1258-F5xx-Z3CT		
FINISH PER NOTE 2.			CHK I. Basil	DATE 11-29-06	SIZE A	FSCM NO 72794	DWG. NO. C1258-F5
<small>THE FASTENER PARTS SHOWN IN THIS PRINT ARE PROPRIETARY ARTICLES TO WHICH DFCI SOLUTIONS, INC. RETAINS THE EXCLUSIVE RIGHTS OF MANUFACTURE, USE AND SALE. THE PRINT OR DRAWING IS SUBMITTED IN CONFIDENCE AND DOES NOT CONVEY A LICENSE OR PERMISSION TO MANUFACTURE THE FASTENER OR FASTENER PARTS.</small> <small>DATE: 07/01/08 FORM: DRAWING</small>		NEXT ASSY	USED ON	DATE 11-29-06	SCALE NTS	WT.	REV. B
		APPLICATION BLOCK		SALES	SHEET 1 OF 2		


UNCONTROLLED

REVISIONS			
SYM	DESCRIPTION	DATE	APPROV
B	CHNG FINSH,ADD SHT2,ECN 1001	11-21-6	R.OLSON

NOTES:

- MATERIAL: STUD = PER A.I.S.I 8620 STEEL.  
HOUSING = PER A.I.S.I C1008/C1010 STEEL.  
SPRING = STAINLESS STEEL TYPE 302/316, SPRING TEMPER.
- FINISH ON HOUSING & STUD ARE:  
ZINC PLATE PER ASTM-B-633, TYPE III, SC 2, CLEAR TRIVALENT CHROMATE WITH SEALER. (RoHS COMPLIANT) FINISH SUFFIX: -Z3CT  
THE ABOVE MENTIONED FINISH WILL BE SUPPLIED AS THE STANDARD FINISH, UPON DEPLETION OF EXISTING STOCK WHICH ARE FINISHED AS FOLLOW: ZINC PLATE PER ASTM-B-633, TYPE III, SC 2, CLEAR CHROMATE. FINISH SUFFIX -Z3C.
- FOR THE APPLICATION OF ALTERNATIVE FINISHES, REMOVE SUFFIX -Z3CT FROM THE PART NO. AND ADD THE REQUIRED FINISH TO THE PART NO. SUFFIX. \*EXAMPLE FOR BLACK ZINC TRIVALENT CHROMATE FINISH, THE PART NO. IS 1258-F540-Z3BT.
- PLEASE VISIT WWW.DFCIS.COM/C1258-F5 FOR A LIST OF AVAILABLE FINISHES.

STUD ASSY. PART NO.	'G'
1258-F540-Z3CT	.400
1258-F545-Z3CT	.450
1258-F550-Z3CT	.500
1258-F555-Z3CT	.550
1258-F560-Z3CT	.600
1258-F565-Z3CT	.650
1258-F570-Z3CT	.700
1258-F575-Z3CT	.750
1258-F580-Z3CT	.800
1258-F585-Z3CT	.850
1258-F5100-Z3CT	1.000
1258-F5110-Z3CT	1.100

MAT'L PER NOTE 1.		TOLERANCES ON DIMENSIONS UNLESS OTHERWISE SPECIFIED X* = ±2* .XX = ±.015 X/X = ±1/32 .XXX = ±.010 MACHINE FINISH 125T		 <b>DFCI SOLUTIONS INC.</b> 425 UNION BOULEVARD WEST ISLIP, NEW YORK 11795	
HEAT TREAT STUD=ROCKWELL C27-33.		PART NO.	DRN S. FRANCIS DATE 4-21-04	ST-1200 EJECT STUD ASSY. 1258-F5xx-Z3CT	
FINISH PER NOTE 2.			CHK F. Basil DATE 11-29-06	SIZE A	FSCM NO 72794
<small>THE FASTENER PARTS SHOWN IN THIS PRINT ARE PROPRIETARY ARTICLES TO WHICH DFCI SOLUTIONS, INC. RETAINS THE EXCLUSIVE RIGHTS OF MANUFACTURE, USE AND SALE. THE PRINT OR DRAWING IS SUBMITTED IN CONFIDENCE AND DOES NOT CONVEY A LICENSE OR PERMISSION TO MANUFACTURE THE PARTS OR FASTENER PARTS. © COPYRIGHT 2006, DFCI SOLUTIONS INC. ALL RIGHTS RESERVED.</small>			ENG R. OLSON DATE 11/28/06	DWG. NO. C1258-F5	REV. B
		NEXT ASSY	USED ON B. Hildebrand DATE 11/29/06	SCALE NTS	WT.
APPLICATION BLOCK		SALES	DATE	SHEET 2 OF 2	

DATE: 07/01/06 FORM: DRAWING