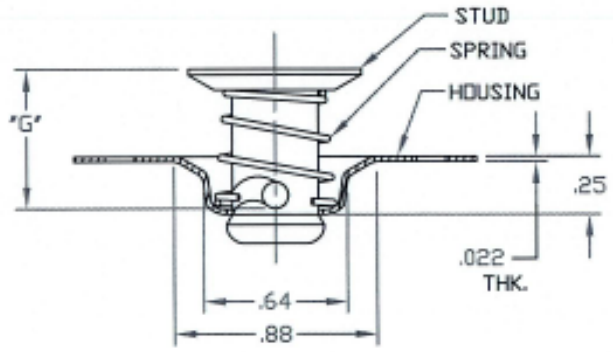
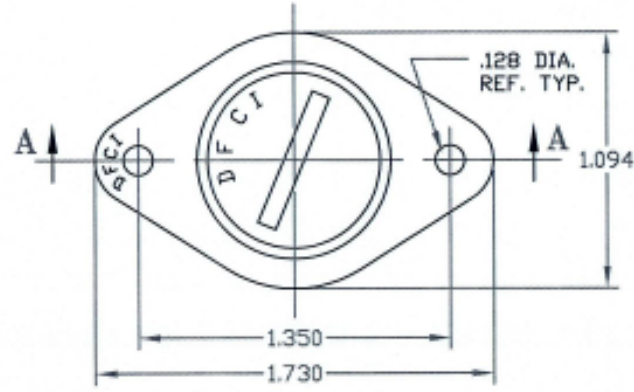


UNCONTROLLED

C1258-F6 SHT. 1of2 REV. B

REVISIONS			
SYM	DESCRIPTION	DATE	APPROV
B	CHNG FINISH PER ECN 1052	8-9-07	R. OLSEN



SECTION A-A
UN-LOCKED POSITION

FOR PART NO. REFER TO SHEET 2 of 2.

MATL PER NOTE 1.	TOLERANCES ON DIMENSIONS UNLESS OTHERWISE SPECIFIED X = ±2' .XX = ±.015 X/X = ±1/32 .XXX = ±.010 MACHINE FINISH 125T		DFCI SOLUTIONS INC. 425 UNION BOULEVARD WEST ISLIP, NEW YORK 11795	
HEAT TREAT PER NOTE 2.	PART NO.	DRN S. Francis DATE 1-14-04	TITLE 1200 LINE S.E STUD ASSY. 1258-F6xx-Z3CT.	
FINISH PER NOTE 3.		CHK F. Basile DATE 8-3-07	SIZE A	FSCM NO 72794
<small>THE FASTENER PARTS SHOWN IN THIS PRINT ARE PROPRIETARY ARTICLES TO WHICH DFCI SOLUTIONS INC. RETAINS THE EXCLUSIVE RIGHTS OF MANUFACTURE, USE AND SALE. THE PRINT OR DRAWING IS SUBMITTED IN CONFIDENCE AND DOES NOT CONVEY A LICENSE OR PERMISSION TO MANUFACTURE THE PARTS OR FASTENER PARTS. © COPYRIGHT 2003, DFCI SOLUTIONS INC. ALL RIGHTS RESERVED.</small>		ENG R. OLSEN DATE 8/13/07	DWG. NO. C1258-F6	REV. B
	NEXT ASSY	USED ON	DATE 8/13/07	SHEET 1 OF 2
APPLICATION BLOCK		SALES	SCALE NTS	WT.

DATE: 07/01/06 FORM: DRAWING


UNCONTROLLED

REVISIONS			
SYM	DESCRIPTION	DATE	APPROV
B	CHNG FINISH PER ECN 1052	8-9-07	<i>R. OLSEN</i>

NOTES:

- MATERIAL:
 STUD: PER A.I.S.I 8620 STEEL.
 HOUSING: PER A.I.S.I 1008 OR 1010 STEEL.
 SPRING: ST. STEEL 300 SERIES, SPRING TEMPER.
- HEAT TREAT:
 STUD ONLY, ROCKWELL C27 - 33.
- FINISH: STUD AND HOUSING:
 ZINC PLATE PER ASTM-B-633, TYPE III, SC 2,
 CLEAR TRIVALENT CHROMATE WITH SEALER.
 (ROHS COMPLIANT) FINISH SUFFIX: -Z3CT
 THE ABOVE MENTIONED FINISH WILL BE SUPPLIED
 AS THE STANDARD FINISH
 UPON DEPLETION OF EXISTING STOCK WHICH ARE
 FINISHED AS FOLLOWS:
 ZINC PLATE PER ASTM-B-633, TYPE III, SC 2,
 CLEAR CHROMATE. (FINISH SUFFIX: -Z3C)
FINISH: SPRING:
 NATURAL.
- FOR THE APPLICATION OF ALTERNATIVE FINISHES,
 REMOVE SUFFIX -Z3CT FROM THE PART NO.
 AND ADD THE REQUIRED FINISH TO THE PART NO. SUFFIX.
 *EXAMPLE FOR BLACK ZINC TRIVALENT CHROMATE,
 1258-F640-Z3BT.
- PLEASE VISIT WWW.DFCIS.COM/C1258-F6 FOR A LIST OF
 AVAILABLE FINISHES.

STUD ASSY. P/N	*G*
1258-F640-Z3CT	.400
1258-F645-Z3CT	.450
1258-F650-Z3CT	.500
1258-F655-Z3CT	.550
1258-F660-Z3CT	.600
1258-F665-Z3CT	.650
1258-F670-Z3CT	.700
1258-F675-Z3CT	.750
1258-F680-Z3CT	.800
1258-F685-Z3CT	.850

MAT'L PER NOTE 1.		TOLERANCES ON DIMENSIONS UNLESS OTHERWISE SPECIFIED X = ±2 .XX = ±.015 X/X = ±1/32 .XXX = ±.010 MACHINE FINISH 125T		 DFCI SOLUTIONS INC. 425 UNION BOULEVARD WEST ISLIP, NEW YORK 11795	
HEAT TREAT PER NOTE 2.		PART NO.	DRN <i>S. Francis</i>		
FINISH PER NOTE 3.			CHK <i>F. Basch</i>	DATE <i>exp 8/13/07</i>	ST-1200 LINE S.E STUD ASSY. 1258-F6xx-Z3CT.
<small>THE FASTENER PARTS SHOWN IN THIS PRINT ARE PROPRIETARY ARTICLES TO WHICH DFCI SOLUTIONS INC. RETAINS THE EXCLUSIVE RIGHTS OF MANUFACTURE, USE AND SALE. THE PRINT OR DRAWING IS SUBMITTED IN CONFIDENCE AND DOES NOT CONVEY A LICENSE OR PERMISSION TO MANUFACTURE THE FASTENER OR FASTENER PARTS. © COPYRIGHT 2005, DFCI SOLUTIONS INC. ALL RIGHTS RESERVED.</small>			ENG <i>R. OLSEN</i>	DATE <i>8/13/07</i>	
NEXT ASSY	USED ON		MFG <i>R. Hill</i>	DATE <i>8/13/07</i>	SIZE A FSCM NO 72794 DWG. NO. C1258-F6 REV. B
APPLICATION BLOCK		SALES	DATE	SCALE NTS WT.	SHEET 2 OF 2