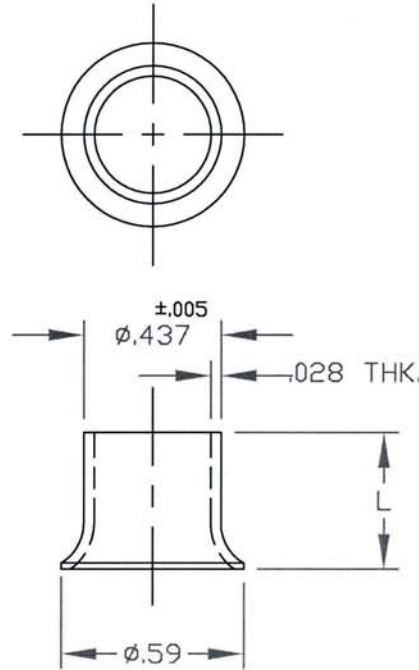


UNCONTROLLED

C1271-6 REV. C

REVISIONS			
SYM	DESCRIPTION	DATE	APPROV
C	ADD TOL. TO .437 DIA. ECN 1102	9-29-08	R.C.



PART NO.	L
1271-6350	.350
1271-6375	.375
1271-6425	.425
1271-6475	.475

NOTE:

1. PLEASE VISIT WWW.DFCIS.COM/C1271-6 FOR A LIST OF AVAILABLE FINISHES.

MAT'L 3003H14 OR 1100H14 ALUM.		TOLERANCES ON DIMENSIONS UNLESS OTHERWISE SPECIFIED X* = ±2° .XX = ±.015 X/X = ±1/32 .XXX = ±.010 MACHINE FINISH 125T		DFCI SOLUTIONS INC. 425 UNION BOULEVARD WEST ISLIP, NEW YORK 11795	
HEAT TREAT NONE.		PART NO.	DRN S. FRANCIS	DATE 3-7-05	TITLE 1200 LINE FULL GROMMET, 1271-6xxx.
FINISH CLEAN AND FREE OF BURRS.		CHK F. Basile	DATE 9-29-08	SIZE A	
<small>THE FASTENER PARTS SHOWN IN THIS PRINT ARE PROPRIETARY ARTICLES TO WHICH DFCI SOLUTIONS INC. RETAINS THE EXCLUSIVE RIGHTS OF MANUFACTURE, USE AND SALE. THE PRINT OR DRAWING IS SUBMITTED IN CONFIDENCE AND DOES NOT CONVEY A LICENSE OR PERMISSION TO MANUFACTURE THE FASTENER OR FASTENER PARTS.</small>		NEXT ASSY	USED ON	ENG Lady Lebrun	DATE 9-29-08
DATE: 07/01/06 FORM: DRAWING		APPLICATION BLOCK	SALES	DATE 9-29-08	FSCM NO 72794
				DWG. NO. C1271-6	REV. C
				SCALE NTS	WT. SHEET 1 OF 1

The parts shown in this print are proprietary articles to which DFCI Solutions, Inc. retains the exclusive rights of manufacture, use and sale. The print or drawing is submitted in confidence and does not convey a license or permission to manufacture the parts. Copyright © 2008 by DFCI Solutions, Inc. All rights reserved.