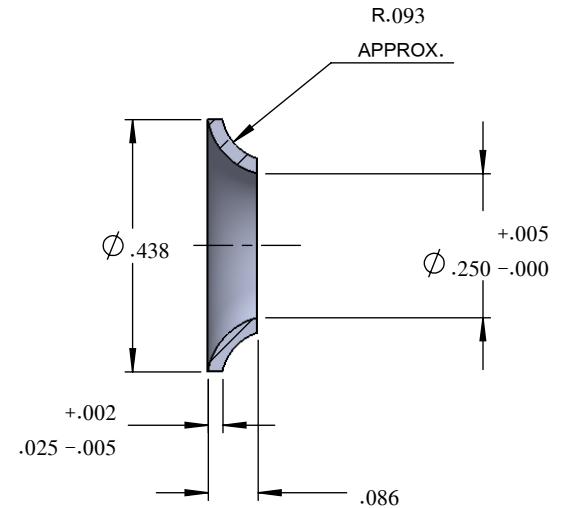
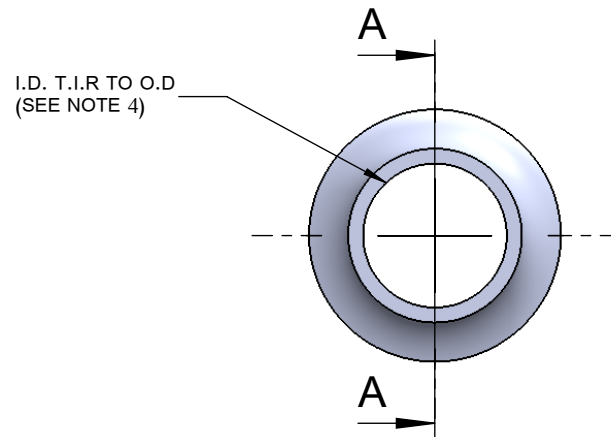
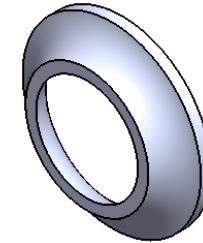


UNCONTROLLED

REVISIONS

SYS	DESCRIPTION	DATE	APPROV
B	PER ECN 1168	06/02/10	


PART NO.	MATERIAL
127H-4	ALUMINUM
127H-4-SS	ST. STEEL



SECTION A-A

NOTES: *Unless otherwise specified.*

1. REMOVE ALL BURRS & BREAK SHARP CORNERS
2. ALL CORNERS & FILLETS .005 MAX
3. PLEASE VISIT WWW.DFCIS.COM/127H-4 FOR A LIST OF AVAILABLE FINISHES
4. THE CONCENTRICITY (F.I.M) = .010

MATERIAL: .025 THK. 3003-H14, 1100-H14 ALUM. OR TYPE 302 ST. STEEL		TOLERANCES ON DIMENSIONS UNLESS OTHERWISE SPECIFIED X* = ±2° .XX = ±.015 CONCENTRICITY F.I.M .005 X/X = ±1/32 .XXX = ±.010 MACHINE FINISH = 63				 DFCI SOLUTIONS INC. 425 UNION BOULEVARD. WEST ISLIP, NEW YORK 11795	
HEAT TREAT: NONE		PART NO.	DRN	DATE	TITLE		
FINISH: NATURAL			W. Zhindon	06/02/10	ST-1200 LINE GROMMET, 127H-4		
			Frank Basile	06/03/10			
THE FASTENER PARTS SHOWN IN THIS PRINT ARE PROPRIETARY ARTICLES TO WHICH DFCI SOLUTIONS INC., RETAINS THE EXCLUSIVE RIGHTS OR MANUFACTURE, USE AND SALE. THE PRINT OR DRAWING IS SUBMITTED IN CONFIDENCE AND DOES NOT CONVEY A LICENSE OR PERMISSION TO MANUFACTURE THE FASTENER OR FASTENER PARTS. (C) COPYRIGHT 2009, DFCI SOLUTIONS INC. ALL RIGHTS RESERVED.			ENG.	DATE	SIZE FSCM NO DWG. NO. REV. A 72794 C127H-4 B		
			Ed Velazquez	06/03/10			
NEXT ASSY USED ON			Q.C.	DATE	SCALE: NTS WEIGHT: SHEET 1 OF 1		
APPLICATION BLOCK			SALES.	DATE			