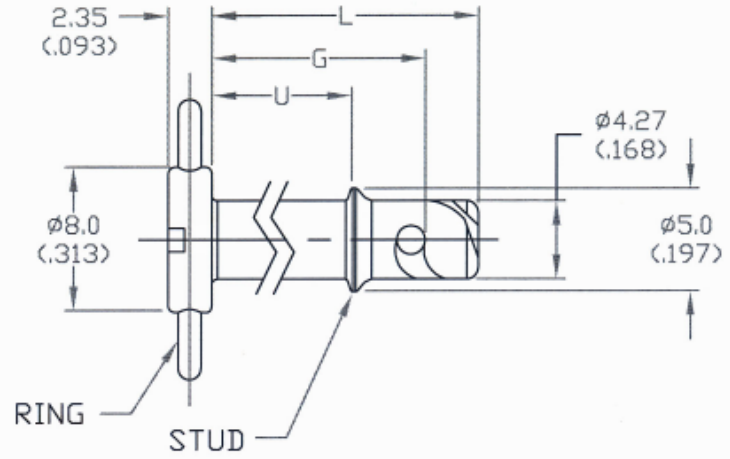
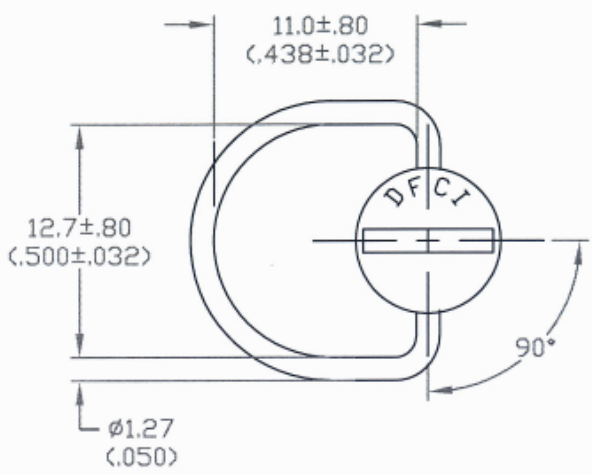


UNCONTROLLED

C1631-44M SHT. 1of2 REV. *c*

REVISIONS			
SYM	DESCRIPTION	DATE	APPROV
C	ADD CUST. DWG. ECN 1036	4-16-07	<i>R. OLSEN</i>



FOR PART NO. REFER TO SHEET 2 of 2.

ALL TOLERANCES ARE IN INCHES

MAT'L PER NOTE 2.	TOLERANCES ON DIMENSIONS UNLESS OTHERWISE SPECIFIED X = ±2° .XX = ± .015 X/X = ±1/32 .XXX = ± .010		MACHINE FINISH 125T		DFCI SOLUTIONS INC. 425 UNION BOULEVARD WEST ISLIP, NEW YORK 11795
HEAT TREAT PER NOTE 3.	PART NO.	DRN <i>S. Francis</i>	DATE 4-16-07	CHK <i>F. Basile</i>	
FINISH PER NOTE 1.		ENG <i>R. OLSEN</i>	DATE 4-16-07	MFG <i>[Signature]</i>	SIZE A
<small>THE FASTENER PARTS SHOWN IN THIS PRINT ARE PROPRIETARY ARTICLES TO WHICH DFCI SOLUTIONS INC. RETAINS THE EXCLUSIVE RIGHTS OF MANUFACTURE, USE AND SALE. THE PRINT OR DRAWING IS SUBMITTED IN CONFIDENCE AND DOES NOT CONVEY A LICENSE OR PERMISSION TO MANUFACTURE THE FASTENER OR FASTENER PARTS.</small> <small>© COPYRIGHT 2003, DFCI SOLUTIONS INC. ALL RIGHTS RESERVED.</small>	NEXT ASSY	USED ON	QC <i>B. Hildreth</i>	DATE 4/18/07	FSCM NO 72794
DATE: 07/01/06	FORM: DRAWING	APPLICATION BLOCK	SALES	DATE	DWG. NO. C1631-44M
					REV. C
					SCALE NTS
					WT.
					SHEET 1 OF 2

The parts shown in this print are proprietary articles to which DFCI Solutions, Inc. retains the exclusive rights of manufacture, use and sale. The print or drawing is submitted in confidence and does not convey a license or permission to manufacture the parts. Copyright © 2013 by DFCI Solutions, Inc. All rights reserved.


UNCONTROLLED

REVISIONS			
SYM	DESCRIPTION	DATE	APPROV
C	ADD CUST. DWG. ECN 1036	4-16-07	<i>R. OLBES</i>

STUD ASSY. PART NO.	L	G	U
1631-4408-Z3CT	10.5 (.41)	8 (.315)	3 (.12)
1631-4409-Z3CT	11.5 (.45)	9 (.354)	4 (.16)
1631-4410-Z3CT	12.5 (.49)	10 (.394)	5 (.20)
1631-4411-Z3CT	13.5 (.53)	11 (.433)	6 (.24)
1631-4412-Z3CT	14.5 (.57)	12 (.472)	7 (.28)
1631-4413-Z3CT	15.5 (.61)	13 (.512)	8 (.32)
1631-4414-Z3CT	16.5 (.65)	14 (.551)	9 (.35)
1631-4415-Z3CT	17.5 (.69)	15 (.590)	10 (.39)
1631-4416-Z3CT	18.5 (.73)	16 (.630)	11 (.43)
1631-4417-Z3CT	19.5 (.77)	17 (.669)	12 (.47)
1631-4418-Z3CT	20.5 (.81)	18 (.709)	13 (.51)
1631-4419-Z3CT	21.5 (.85)	19 (.748)	14 (.55)
1631-4420-Z3CT	22.5 (.89)	20 (.787)	15 (.59)
1631-4421-Z3CT	23.5 (.93)	21 (.827)	16 (.63)
1631-4435-Z3CT	37.5 (1.48)	35 (1.378)	30 (1.18)

NOTES:

1. FINISH:
ZINC PLATE PER ASTM-B-633, TYPE III, SC 2. CLEAR TRIVALENT CHROMATE WITH SEALER. (ROHS COMPLIANT) FINISH SUFFIX: -Z3CT
2. MATERIAL:
STUD = PER A.I.S.I 8620 STEEL.
RING = HIGH CARBON STEEL.
3. HEAT TREAT:
STUD = CASE HARDENED.
RING = ROCKWELL C40 - 45.
4. FOR THE APPLICATION OF ALTERNATIVE FINISHES, REMOVE SUFFIX -Z3CT FROM THE PART NO. AND ADD THE REQUIRED FINISH TO THE PART NO. SUFFIX.
*EXAMPLE FOR BLACK ZINC TRIVALENT CHROMATE FINISH, THE PART NO. IS 1631-4408-Z3BT.
5. PLEASE VISIT WWW.DFCIS.COM/C1631-44M FOR A LIST OF AVAILABLE FINISHES.
6. ALL PRIMARY DIMENSION ARE IN MILLIMETER AND DIMENSION SHOWN BETWEEN (xxx) ARE IN INCHES.

MAT'L PER NOTE 2.	TOLERANCES ON DIMENSIONS UNLESS OTHERWISE SPECIFIED X* = ±2* .XX = ±.015 X/X = ±1/32 .XXX = ±.010 MACHINE FINISH 125T		 DFCI SOLUTIONS INC. 425 UNION BOULEVARD WEST ISLIP, NEW YORK 11795	
HEAT TREAT PER NOTE 3.	PART NO.	DRN <i>S. FRADIG</i>	DATE 4-16-07	PX-1600 LINE, STUD ASSY. 1631-44xx-Z3CT
FINISH PER NOTE 1.		CHK <i>F. Basile</i>	DATE 4-18-07	
		ENG <i>R. OLBES</i>	DATE 4/20/07	SIZE A
		MFG <i>[Signature]</i>	DATE 4/18/07	FSCM NO 72794
	NEXT ASSY	USED ON	DATE 4/18/07	DWG. NO. C1631-44M
	APPLICATION BLOCK	SALES	DATE	REV. C
			SCALE NTS	WT. SHEET 2 OF 2