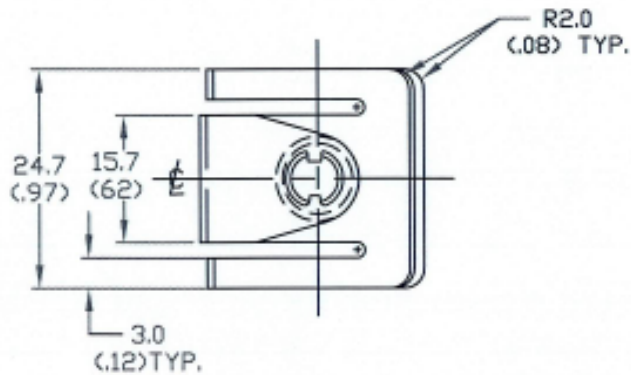


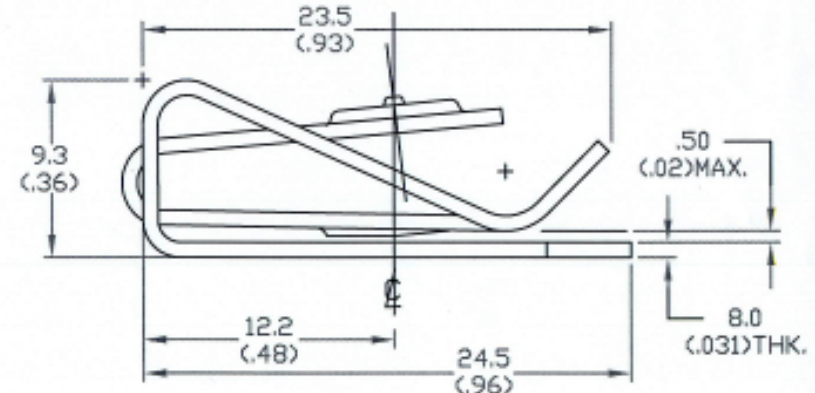
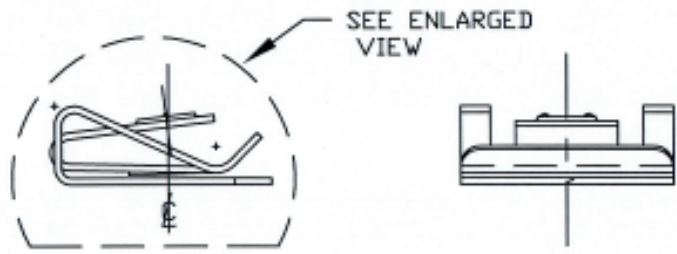
UNCONTROLLED

C1633-6300 SHT. 1of2 REV. C

REVISIONS			
SYM	DESCRIPTION	DATE	APPROV
C	IMPLEMENT CUST.DWG.ECN 1064	10-26-07	R.OLSON



GENERAL VIEW



ENLARGED VIEW

FOR PART NO. REFER TO SHEET 2of2.

ALL TOLERANCES ARE IN INCHES

MATL .80mm(.0315 THK.) A.I.S.I 1065-1078 STEEL (SPRING TEMPER)		TOLERANCES ON DIMENSIONS UNLESS OTHERWISE SPECIFIED $X = \pm 2^*$.XX = $\pm .015$ $X/X = \pm 1/32$.XXX = $\pm .010$		MACHINE FINISH 125/	
HEAT TREAT SPRING TEMPER.		PART NO.		DRN S. FRANCIS DATE 10-30-07	
FINISH SEE SHT. 2of2		CHK F. Basil DATE 11-1-07		ENG R. OLSON DATE 11/1/07	
<small>THE FASTENER PARTS SHOWN IN THIS PRINT ARE PROPRIETARY ARTICLES TO WHICH DFCI SOLUTIONS, INC. RETAINS THE EXCLUSIVE RIGHTS OF MANUFACTURE, USE AND SALE. THE PRINT OR DRAWING IS SUBMITTED IN CONFIDENCE AND DOES NOT CONVEY A LICENSE OR PERMISSION TO MANUFACTURE THE FASTENER OR FASTENER PARTS.</small>		MFG DATE 11/1/07		QCC B. Hildebrand DATE 11/1/07	
NEXT ASSY		USED ON		SALES	
APPLICATION BLOCK		DATE		SCALE NTS	
DATE: 07/01/06		FORM: DRAWING		DFCI SOLUTIONS INC. 425 UNION BOULEVARD WEST ISLIP, NEW YORK 11795	
SIZE A		FSCM NO 72794		DWG. NO. C1633-6300	
WT.		REVISIONS C		SHEET 1 OF 2	

The parts shown in this print are proprietary articles to which DFCI Solutions, Inc. retains the exclusive rights of manufacture, use and sale. The print or drawing is submitted in confidence and does not convey a license or permission to manufacture the parts. Copyright © 2007 by DFCI Solutions, Inc. All rights reserved.


UNCONTROLLED

REVISIONS			
SYM	DESCRIPTION	DATE	APPROV
C	IMPLEMENT CUST.DWG.ECN 1064	10-26-07	R. OLIVSON

PART NO.	ROHS COMPLIANT FINISHES
1633-6300-Z3CT	CLEAR ZINC, STANDARD FINISH
1633-6300-Z3YT	YELLOW ZINC, OPTIONAL FINISH
1633-6300-Z3BT	BLACK ZINC (GLOSS) OPTIONAL FINISH
1633-6300-ZFBT	BLACK (FLAT) OPTIONAL FINISH

NOTE:
 1. ALL PRIMARY DIMENSION ARE IN MILLIMETERS AND DIMENSIONS SHOWN BETWEEN (xx) SHOWN ARE IN INCHES.

ALL TOLERANCES ARE IN INCHES

MAT'L .80mm(.0315 THK.) A.I.S.I 1065-1078 STEEL (SPRING TEMPER)		TOLERANCES ON DIMENSIONS UNLESS OTHERWISE SPECIFIED X* = ±2* .XX = ±.015 X/X = ±1/32 .XXX = ±.010 MACHINE FINISH 125T		 DFCI SOLUTIONS INC. 425 UNION BOULEVARD WEST ISLIP, NEW YORK 11795	
HEAT TREAT SPRING TEMPER.		PART NO.	DRN S. FRAYAS DATE 10-30-07	PX-1600 LINE RECEPTACLE, 1633-6300-Z3CT	
FINISH SEE SHT. 2of2		CHK I. Basil DATE 11-1-07	ENG R. OLIVSON DATE 11/1/07	SIZE A	FSCM NO 72794
<small>THE FASTENER PARTS SHOWN IN THIS PRINT ARE PROPRIETARY ARTICLES TO WHICH DFCI SOLUTIONS INC. RETAINS THE EXCLUSIVE RIGHTS OF MANUFACTURE, USE AND SALE. THE PRINT OR DRAWING IS SUBMITTED IN CONFIDENCE AND DOES NOT CONVEY A LICENSE OR PERMISSION TO MANUFACTURE THE FASTENER OR FASTENER PARTS.</small>		NEXT ASSY	USED ON	DWG. NO. C1633-6300	REV. C
<small>DATE: 07/01/06 FORM: DRAWING</small>		APPLICATION BLOCK		MFG B. H. DATE 11/1/07	QC B. H. DATE 11/1/07
		SALES		SCALE NTS	WT. SHEET 2 OF 2