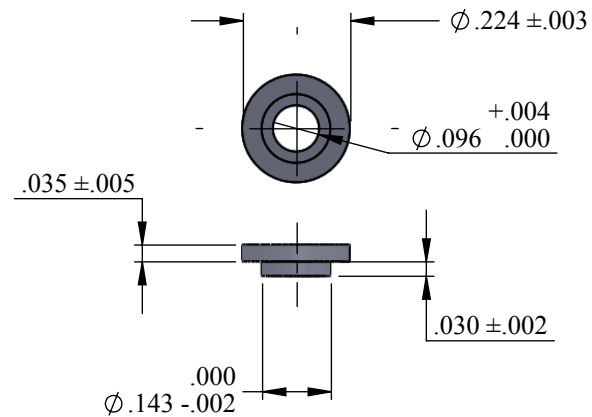
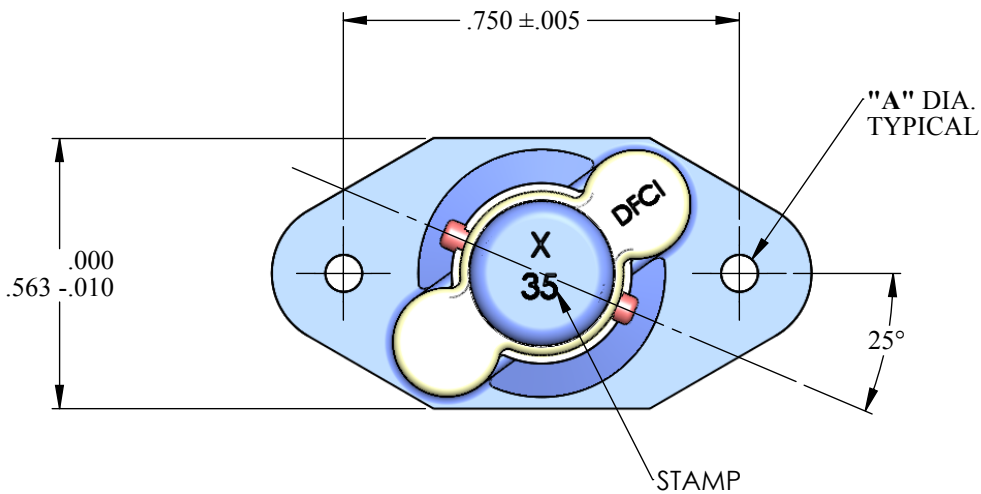
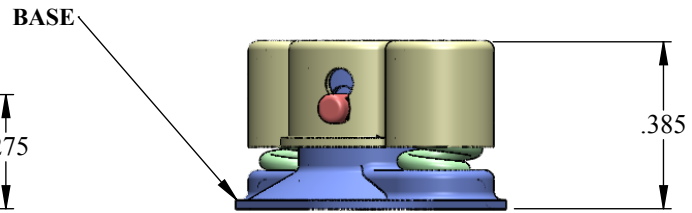
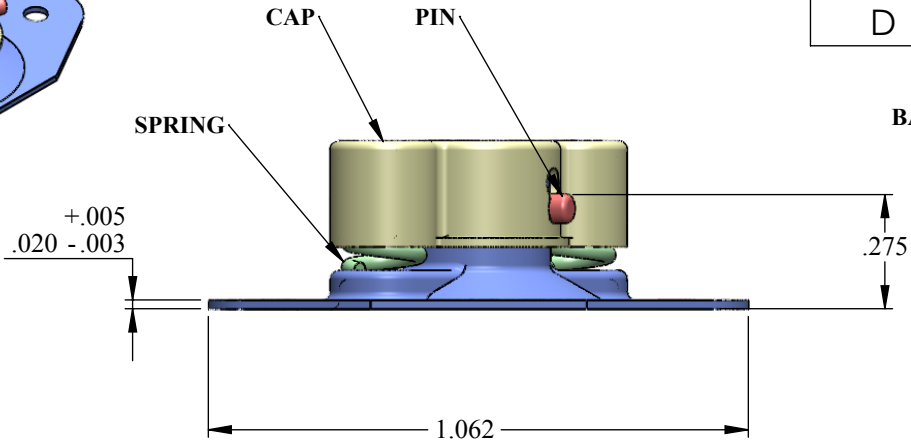
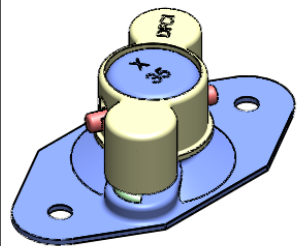


UNCONTROLLED

REVISIONS			
SYS	DESCRIPTION	DATE	APPROV
D	PER ECN. 1168 & 1211	06-13-12	



SPACER DETAIL

TWO (2) SPACERS P/N 2350-18F-5-SS ARE SUPPLIED WITH EACH 2350-18F-241708-N4F RECEPTACLE ASSEMBLY.

MATERIAL: SEE NOTE 1	TOLERANCES ON DIMENSIONS UNLESS OTHERWISE SPECIFIED
HEAT TREAT: SEE NOTE 1	X* = ±2° X/X = ±1/32
FINISH: SEE NOTE 2	.XX = ±.015 .XXX = ±.010
<small>THE FASTENER PARTS SHOWN IN THIS PRINT ARE PROPRIETARY ARTICLES TO WHICH DFCI SOLUTIONS INC., RETAINS THE EXCLUSIVE RIGHTS OF MANUFACTURE, USE AND SALE. THE PRINT OR DRAWING IS SUBMITTED IN CONFIDENCE AND DOES NOT CONVEY A LICENSE OR PERMISSION TO MANUFACTURE THE FASTENER OR FASTENER PARTS.</small> (C) COPYRIGHT 2009, DFCI SOLUTIONS INC. ALL RIGHTS RESERVED.	PART NO. 2350-18*-241708-N4F
	DRN <i>Frank Basile</i> DATE 06-13-12
	CHK. <i>Frank Basile</i> DATE 06-13-12
	ENG. <i>Frank Basile</i> DATE 06-13-12
	MFG. <i>Rashid Ibrahim</i> DATE 06-13-12
	G.C. <i>Frank Basile</i> DATE 06-13-12
NEXT ASSY	USED ON
APPLICATION BLOCK	SALES.

MACHINE FINISH = 125/	
DRN <i>Frank Basile</i> DATE 06-13-12	
CHK. <i>Frank Basile</i> DATE 06-13-12	
ENG. <i>Frank Basile</i> DATE 06-13-12	
MFG. <i>Rashid Ibrahim</i> DATE 06-13-12	
G.C. <i>Frank Basile</i> DATE 06-13-12	
NEXT ASSY	USED ON
APPLICATION BLOCK	SALES.



DFCI SOLUTIONS INC.
425 UNION BOULEVARD.
WEST ISLIP, NEW YORK 11795

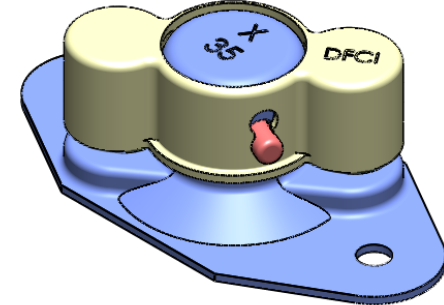
TITLE SU-2300 LINE RECEPTACLE ASSEMBLY 2350-18*-241708-N4F			
SIZE A	FSCM NO. 72794	DWG. NO. C2350-241708	REV. D
SCALE: NTS		WEIGHT: .0065 LBS.	SHEET 1 OF 2

UNCONTROLLED


REVISIONS			
SYS	DESCRIPTION	DATE	APPROV
D	PER ECN. 1168 & 1211	06-03-12	

NOTES:

- MATERIALS:**
BASE - A.I.S.I. 4130 STEEL, HEAT TREATED TO ROCKWELL C37 - 40
PIN & SPRING - TYPE 17-7 STAINLESS STEEL
CAP - A.I.S.I. 1008/1010 STEEL
SPACERS - TYPE 303 STAINLESS STEEL
- FINISH:**
BASE & CAP - NICKEL PLATE PER QQ-N-290, CLASS 1, GRADE F.
- PART WILL BE MARKED AS NOTED (R 35) UNTIL DEPLETION OF EXISTING STOCK, THEREAFTER PARTS WILL BE MARKED WITH DESIGNATION 35



RECEPTACLE ASSEMBLY PART NUMBER	"A" DIAMETER +.002 / -.000	STAMP
2350-18-241708-N4F	.096	R 35 (SEE NOTE 3)
2350-18F-241708-N4F	.193	F 35

MATERIAL: SEE NOTE 1	TOLERANCES ON DIMENSIONS UNLESS OTHERWISE SPECIFIED X° = ±2° .XX = ±.015 X/X = ±1/32 .XXX = ±.010 MACHINE FINISH = .125			 DFCI SOLUTIONS INC. 425 UNION BOULEVARD. WEST ISLIP, NEW YORK 11795
HEAT TREAT: SEE NOTE 1	PART NO. 2350-18*-241708-N4F	DRN <i>Frank Basile</i> DATE 06-13-12	DATE 06-13-12	
FINISH: SEE NOTE 2		CHK. <i>Frank Basile</i> DATE 06-13-12	DATE 06-13-12	
THE FASTENER PARTS SHOWN IN THIS PRINT ARE PROPRIETARY ARTICLES TO WHICH DFCI SOLUTIONS INC., RETAINS THE EXCLUSIVE RIGHTS OF MANUFACTURE, USE AND SALE. THE PRINT OR DRAWING IS SUBMITTED IN CONFIDENCE AND DOES NOT CONVEY A LICENSE OR PERMISSION TO MANUFACTURE THE FASTENER OR FASTENER PARTS. (C) COPYRIGHT 2009, DFCI SOLUTIONS INC. ALL RIGHTS RESERVED.		ENG. <i>Robert Alldread</i> DATE 06-13-12	DATE 06-13-12	
		MFG. <i>Rashid Lubman</i> DATE 06-13-12	DATE 06-13-12	
		G.C. <i>Robert Alldread</i> DATE 06-13-12	DATE 06-13-12	
	NEXT ASSY	USED ON	SALES.	TITLE SU-2300 LINE RECEPTACLE ASSEMBLY 2350-18*-241708-N4F SIZE A FSCM NO. 72794 DWG. NO. C2350-241708 REV. D
APPLICATION BLOCK		SCALE: NTS		WEIGHT: .0065 LBS. SHEET 2 OF 2