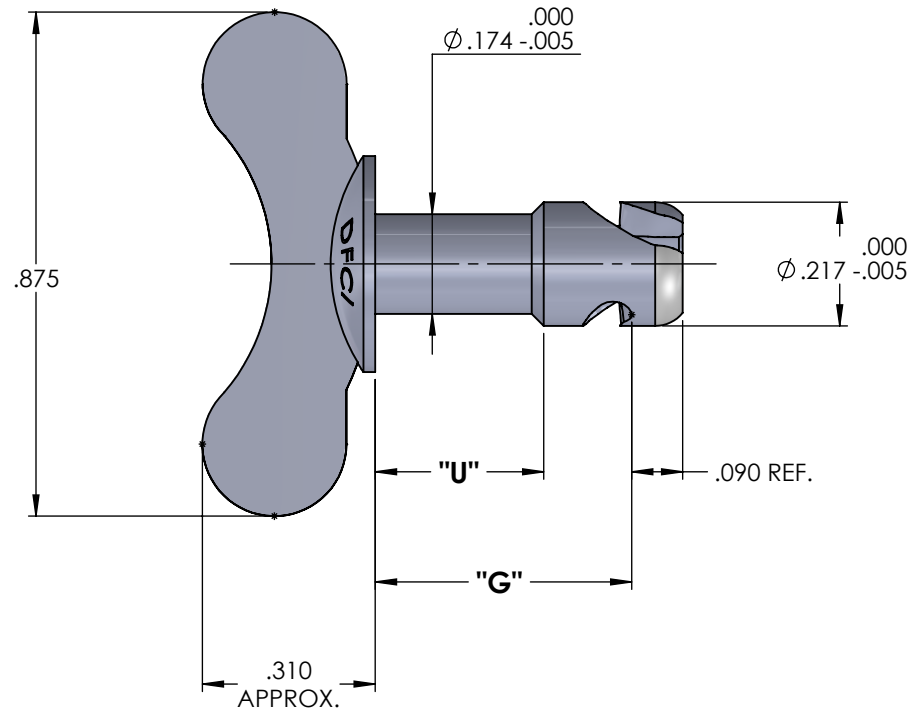


REVISIONS			
SYS	DESCRIPTION	DATE	APPROV
E	PER ECN 1260	02/05/15	



**UNCONTROLLED**

MATERIAL:	SEE NOTE 1
HEAT TREAT:	SEE NOTE 2
FINISH:	SEE NOTE 3
<p>THE FASTENER PARTS SHOWN IN THIS PRINT ARE PROPRIETARY ARTICLES TO WHICH DFCI SOLUTIONS INC., RETAINS THE EXCLUSIVE RIGHTS OF MANUFACTURE, USE AND SALE. THE PRINT OR DRAWING IS SUBMITTED IN CONFIDENCE AND DOES NOT CONVEY A LICENSE OR PERMISSION TO MANUFACTURE THE FASTENER OR FASTENER PARTS.</p> <p>(C) COPYRIGHT 2009, DFCI SOLUTIONS INC. ALL RIGHTS RESERVED.</p>	

TOLERANCES ON DIMENSIONS UNLESS OTHERWISE SPECIFIED			
X° = ±2°	.XX = ±.015	MACHINE FINISH = .125	
X/X = ±1/32	.XXX = ±.010		
PART NO.	DRN	DATE	
SEE TABLE ON SHEET 2 OF 2	Frank Basile	10/10/14	
	CHK. Frank Basile	DATE 10/10/14	
	ENG. Peter Altkorn	DATE 10/10/14	
	MFG. Rashm Lubman	DATE 10/10/14	
NEXT ASSY	USED ON	G.C. Peter Altkorn	DATE 10/10/14
APPLICATION BLOCK	SALES.	DATE	

**DFCI SOLUTIONS INC.**  
 425 UNION BOULEVARD.  
 WEST ISLIP, NEW YORK 11795

**SU-2300 WING HEAD STUD  
 2351-W20-\*\*-Z3CT**

SIZE <b>A</b>	FSCM NO. 72794	DWG. NO. C2351-W	REV. E
---------------	----------------	------------------	--------

SCALE: NTS
WEIGHT:
SHEET 1 OF 2

REVISIONS

SYS	DESCRIPTION	DATE	APPROV
E	PER ECN 1260	02/05/15	

PART NUMBER	"G" DIMENSION	"U" DIMENSION
2351-W20-3-Z3CT	.260	.130
2351-W20-6-Z3CT	.290	.170
2351-W20-9-Z3CT	.32	
2351-W20-12-Z3CT	.350	.210
2351-W20-15-Z3CT	.380	.250
2351-W20-18-Z3CT	.410	.290
2351-W20-21-Z3CT	.440	
2351-W20-24-Z3CT	.470	.330
2351-W20-27-Z3CT	.500	.370
2351-W20-30-Z3CT	.530	.410
2351-W20-33-Z3CT	.560	
2351-W20-36-Z3CT	.590	.450
2351-W20-39-Z3CT	.620	.490
2351-W20-42-Z3CT	.650	.530
2351-W20-45-Z3CT	.680	
2351-W20-48-Z3CT	.710	
2351-W20-51-Z3CT	.740	
2351-W20-54-Z3CT	.770	
2351-W20-57-Z3CT	.800	
2351-W20-60-Z3CT	.830	
2351-W20-141-Z3CT	1.640	

NOTES: UNLESS OTHERWISE SPECIFIED

1. MATERIAL:

STUD: A.I.S.I. 8620 or 4037 STEEL  
WING: C1010 - C1018 STEEL

FOR A STUD MADE FROM TYPE 303 STAINLESS STEEL WITH A TYPE 302 STAINLESS STEEL WING, REMOVE THE FINISH SUFFIX -Z3CT FROM THE PART NUMBER AND ADD -SS (EXAMPLE: 2351-W20-3-SS)

FOR A STUD MADE FROM TYPE 17-4 STAINLESS STEEL WITH A TYPE 302 STAINLESS STEEL WING, REMOVE THE FINISH SUFFIX -Z3CT FROM THE PART NUMBER AND ADD -18S (EXAMPLE: 2351-W20-3-18S)

2. HEAT TREATMENT:

- A. PART MADE OF STEEL - ROCKWELL C30 - 38
- B. PART MADE OF TYPE 303 STAINLESS STEEL - NOT HEAT TREATED
- C. PART MADE OF TYPE 17-4 STAINLESS STEEL - ROCKWELL C39 - 43
- D. STEEL OR STAINLESS STEEL WINGS ARE NOT HEAT TREATED.


3. FINISH:

ZINC PLATED PER ASTM-B-633, TYPE III, SC2, CLEAR TRIVALENT CHROMATE WITH SEALER. (RoHS COMPLIANT)  
THE ABOVE MENTIONED FINISH WILL BE SUPPLIED AS THE STANDARD FINISH, UPON DEPLETION OF EXISTING STOCK WHICH ARE FINISHED AS FOLLOWS:  
CADMIUM PLATED PER QQ-P-416, TYPE 1 CLASS 2 CLEAR CHROMATE.

4. FOR THE APPLICATION OF ALTERNATIVE FINISHES, REMOVE THE SUFFIX -Z3CT FROM THE PART NUMBER AND ADD THE REQUIRED FINISH TO THE PART NUMBER. EXAMPLE - FOR YELLOW ZINC TRIVALENT CHROMATE FINISH, THE PART NUMBER WOULD BE 2351-W20-3-Z3YT

5. PLEASE VISIT WWW.DFCIS.COM/2351-W FOR A LIST OF AVAILABLE FINISHES.

# UNCONTROLLED

MATERIAL: SEE NOTE 1	TOLERANCES ON DIMENSIONS UNLESS OTHERWISE SPECIFIED X" = ±2" X/X = ±1/32		.XX = ±.015 .XXX = ±.010		 <b>DFCI SOLUTIONS INC.</b> 425 UNION BOULEVARD. WEST ISLIP, NEW YORK 11795
HEAT TREAT: SEE NOTE 2	PART NO. SEE TABLE	DRN. Frank Basile	DATE 10/10/14	MACHINE FINISH = .125	
FINISH: SEE NOTE 3		CHK. Frank Basile	DATE 10/10/14		
THE FASTENER PARTS SHOWN IN THIS PRINT ARE PROPRIETARY ARTICLES TO WHICH DFCI SOLUTIONS INC., RETAINS THE EXCLUSIVE RIGHTS OF MANUFACTURE, USE AND SALE. THE PRINT OR DRAWING IS SUBMITTED IN CONFIDENCE AND DOES NOT CONVEY A LICENSE OR PERMISSION TO MANUFACTURE THE FASTENER OR FASTENER PARTS. (C) COPYRIGHT 2009, DFCI SOLUTIONS INC. ALL RIGHTS RESERVED.		ENG. <i>Frank Basile</i>	DATE 10/10/14	TITLE SU-2300 WING HEAD STUD 2351-W20-**-Z3CT	
		MFG. <i>Frank Basile</i>	DATE 10/10/14	SIZE A	FSCM NO. 72794
		G.C. <i>Frank Basile</i>	DATE 10/10/14	DWG. NO. C2351-W	REV. E
	NEXT ASSY	USED ON	SALES.	SCALE: NTS	WEIGHT:
	APPLICATION BLOCK			SHEET 2 OF 2	