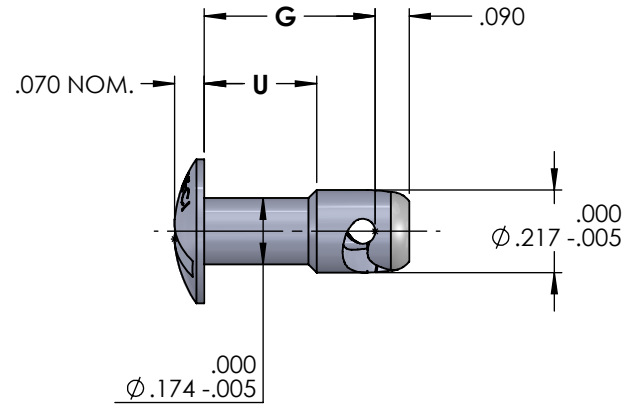
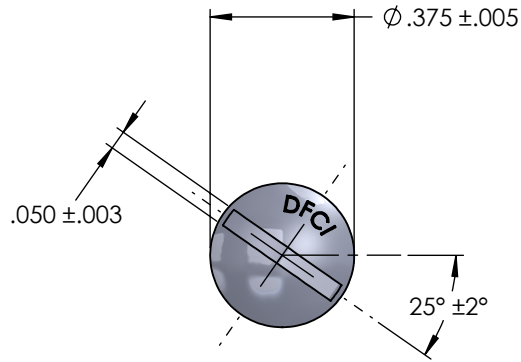


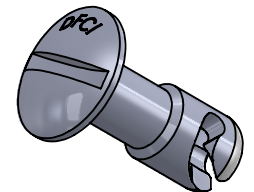
ASSEMBLY PART NUMBER	G	U
2351-20-3-Z3CT	.260	.130
2351-20-6-Z3CT	.290	.170
2351-20-9-Z3CT	.320	.210
2351-20-12-Z3CT	.350	.250
2351-20-15-Z3CT	.380	.290
2351-20-18-Z3CT	.410	.330
2351-20-21-Z3CT	.440	.370
2351-20-24-Z3CT	.470	.410
2351-20-27-Z3CT	.500	.450
2351-20-30-Z3CT	.530	.490
2351-20-33-Z3CT	.560	.530
2351-20-36-Z3CT	.590	
2351-20-39-Z3CT	.620	
2351-20-42-Z3CT	.650	
2351-20-45-Z3CT	.680	
2351-20-48-Z3CT	.710	
2351-20-51-Z3CT	.740	
2351-20-54-Z3CT	.770	
2351-20-57-Z3CT	.800	
2351-20-60-Z3CT	.830	
2351-20-72-Z3CT	.950	

REVISIONS			
SYS	DESCRIPTION	DATE	APPROV
F	PER ECN 1257 & 1168	02/05/15	



NOTES:

- FINISH:** ZINC PLATE PER ASTM-B-633, TYPE III, SC2, CLEAR TRIVALENT CHROMATE WITH SEALER. THE ABOVE MENTIONED FINISH WILL BE SUPPLIED AS THE STANDARD FINISH UPON DEPLETION OF EXISTING STOCK WHICH ARE FINISHED AS FOLLOWS. CADMIUM PLATE PER QQ-P-416, TYPE 1, CLASS 2 CLEAR CHROMATE.
- HEAT TREATMENT:**
 - PART MADE FROM TYPE 8620 OR 4037 STEEL, ROCKWELL C30-38 (STANDARD MATERIAL)
 - PART MADE FROM TYPE 303 STAINLESS STEEL, NO HEAT TREATMENT.
 - PART MADE FROM TYPE 17-4 STAINLESS STEEL, ROCKWELL C39-43
- FOR PART NUMBER OF STUD MADE FROM TYPE 303 STAINLESS STEEL, REMOVE SUFFIX -Z3CT FROM PART NUMBER AND ADD -SS (EXAMPLE: 2351-20-3-SS)
- FOR PART NUMBER OF STUD MADE FROM TYPE 17-4 STAINLESS STEEL, REMOVE SUFFIX -Z3CT FROM PART NUMBER AND ADD -18S (EXAMPLE: 2351-20-3-18S)
- FOR THE APPLICATION OF ALTERNATIVE FINISHES, REMOVE THE SUFFIX -Z3CT AND ADD THE REQUIRED FINISH TO THE PART NUMBER. EXAMPLE: FOR YELLOW ZINC TRIVALENT CHROMATE FINISH, THE PART NUMBER WOULD BE 2351-20-3-Z3YT
- PLEASE VISIT WWW.DFCIS.COM/C2351 FOR A LIST OF AVAILABLE FINISHES.



UNCONTROLLED

MATERIAL:	A.I.S.I. 8620 OR 4037 STEEL TYPE 303 OR 17-4 STAINLESS STEEL
HEAT TREAT:	SEE NOTE 2
FINISH:	SEE NOTE 1
<small>THE FASTENER PARTS SHOWN IN THIS PRINT ARE PROPRIETARY ARTICLES TO WHICH DFCI SOLUTIONS INC., RETAINS THE EXCLUSIVE RIGHTS OF MANUFACTURE, USE AND SALE. THE PRINT OF DRAWING IS SUBMITTED IN CONFIDENCE AND DOES NOT CONVEY A LICENSE OR PERMISSION TO MANUFACTURE THE FASTENER OR FASTENER PARTS.</small>	
<small>(C) COPYRIGHT 2009, DFCI SOLUTIONS INC. ALL RIGHTS RESERVED.</small>	

TOLERANCES ON DIMENSIONS UNLESS OTHERWISE SPECIFIED			
X* = ±2°		.XX = ±.015	
X/X = ±1/32		.XXX = ±.010	
MACHINE FINISH = 125T			
PART NO.	SEE TABLE	DRN	Frank Basile
		DATE	10/10/14
		CHK.	Frank Basile
		DATE	10/10/14
		ENG.	John Alldread
		DATE	10/10/14
		MFG.	Rashm Lockman
		DATE	10/10/14
		G.C.	John Alldread
		DATE	10/10/14
NEXT ASSY	USED ON	SALES.	
APPLICATION BLOCK			

		DFCI SOLUTIONS INC. 425 UNION BOULEVARD. WEST ISLIP, NEW YORK 11795	
TITLE			
SU-2300 OVAL HEAD STUD 2351-20-**-Z3CT			
SIZE	FSCM NO.	DWG. NO.	REV.
A	72794	C2351	F
SCALE: NTS		WEIGHT:	SHEET 1 OF 1