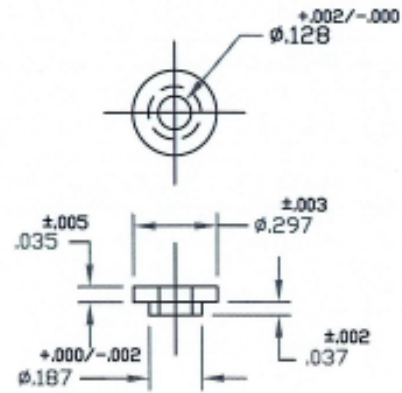
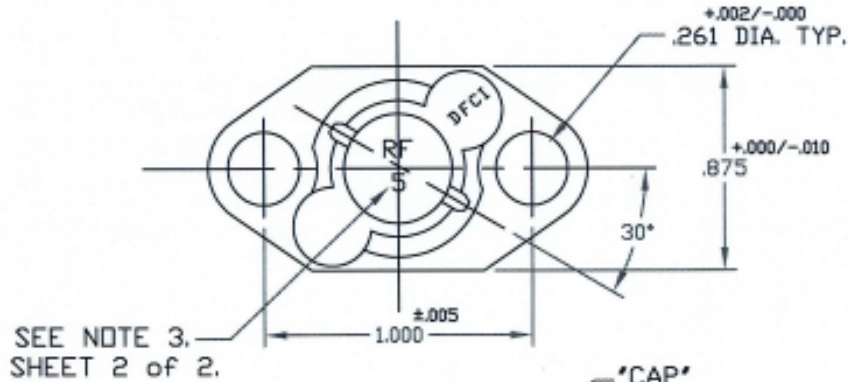


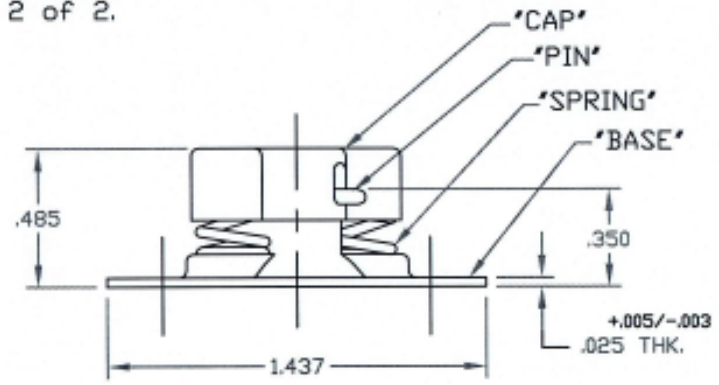
UNCONTROLLED

REVISIONS			
SYM	DESCRIPTION	DATE	APPROV
A	INITIAL RELEASE PER ECN 845.	10-9-07	<i>R. Oleson</i>



SPACER P/N	MATERIAL
2500-18F-5-SS	TYPE 303 ST. STEEL

SPACER DETAIL  
PER NOTE 4,  
SHEET 2 of 2.



FOR PART NO. REFER TO SHEET 2of2.

MATL PER NOTE 2.	TOLERANCES ON DIMENSIONS UNLESS OTHERWISE SPECIFIED X° = ±2° .XX = ± .015 X/X = ±1/32 .XXX = ± .010 MACHINE FINISH 125T		<b>DFCI SOLUTIONS INC.</b> 425 UNION BOULEVARD WEST ISLIP, NEW YORK 11795	
HEAT TREAT PER NOTE 2.	PART NO.	DRN <i>S. Francis</i>	DATE 10-9-07	TITLE <b>SU-2300 RECEPTACLE ASSY.</b> <b>2500-18F-241575-N4F</b>
FINISH PER NOTE 1.		CHK <i>F. Basil</i>	DATE 10-11-07	
<small>THE FASTENER PARTS SHOWN IN THIS PRINT ARE PROPRIETARY ARTICLES TO WHICH DFCSI SOLUTIONS INC. RETAINS THE EXCLUSIVE RIGHTS OF MANUFACTURE, USE AND SALE. THE PRINT OR DRAWING IS SUBMITTED IN CONFIDENCE AND DOES NOT CONVEY A LICENSE OR PERMISSION TO MANUFACTURE THE PARTS OR FASTENER PARTS.</small> <small>© COPYRIGHT 2007, DFCSI SOLUTIONS INC. ALL RIGHTS RESERVED.</small> DATE: 07/01/06 FORM: DRAWING	NEXT ASSY	USED ON	ENG <i>R. Oleson</i>	DATE 10/11/07
	APPLICATION BLOCK	SALES	MFG <i>B. Vito</i>	DATE 10-11-07
			QC <i>S. Natale</i>	DATE 11/11/07
		FSCM NO <b>72794</b>		DWG. NO. C2500F-241575
		SCALE NTS		REV. A
		WT.		SHEET 1 OF 2


UNCONTROLLED

REVISIONS			
SYM	DESCRIPTION	DATE	APPROV
A	INITIAL RELEASE PER ECN 845.	10-9-07	R.OLSON

RECEPTACLE ASSY. P/N
2500-18F-241575-N4F

NOTES:

1. FINISH: BASE AND CAP:  
NICKEL PLATE PER QQ-N-290, CLASS 1, GRADE F.  
PIN AND SPRING ARE NATURAL.
2. MATERIAL:  
"BASE" A.I.S.I 4130 STEEL, HEAT TREAT TO  
ROCKWELL C37-40.  
"CAP" PER A.I.S.I 1008/1010 STEEL.  
"PIN" & "SPRING" 17-7 ST. STEEL.
3. PART WILL BE MARKED AS SHOWN ( RF 5 ) UNTILL  
DEPLETION OF EXISTING STOCK. THEREAFTER PART  
WILL BE MARKED WITH FOLLOWING DESIGNATION "F5".
4. TWO (2) SPACER P/N 2500-18F-5-SS ARE SUPPLIED WITH  
EACH 2500-18F-241575-N4F RECEPTACLE ASSY.
5. PLEASE VISIT WWW.DFCIS.COM/C2500F-241575 FOR A LIST  
OF AVAILABLE FINISHES.

MAT'L PER NOTE 2.	TOLERANCES ON DIMENSIONS UNLESS OTHERWISE SPECIFIED X = ±2" .XX = ±.015 X/X = ±1/32 .XXX = ±.010 MACHINE FINISH 125T		 <b>DFCI SOLUTIONS INC.</b> 425 UNION BOULEVARD WEST ISLIP, NEW YORK 11795	
HEAT TREAT PER NOTE 2.	PART NO.	DRN S. Francis DATE 10-9-07	<b>SU-2300 RECEPTACLE ASSY.</b> <b>2500-18F-241575-N4F</b>	
FINISH PER NOTE 1.		CHK Z. Basil DATE 10-10-07	SIZE A	FSCM NO. 72794
		ENG R. OLSON DATE 10/11/07	DWG. NO. C2500F-241575	REV. A
		MFG B. Hill DATE 10-11-07	SCALE NTS	WT.
	NEXT ASSY	USED ON	SALES	SHEET 2 OF 2
<small>THE FASTENER PARTS SHOWN IN THIS PRINT ARE PROPRIETARY ARTICLES TO WHICH DFCI SOLUTIONS INC. RETAINS THE EXCLUSIVE RIGHTS OF MANUFACTURE, USE AND SALE. THE PRINT OR DRAWING IS SUBMITTED IN CONFIDENCE AND DOES NOT CONVEY A LICENSE OR PERMISSION TO MANUFACTURE THE FASTENER OR FASTENER PARTS.</small>		<small>DATE: 07/01/06 FORM: DRAWING</small>		