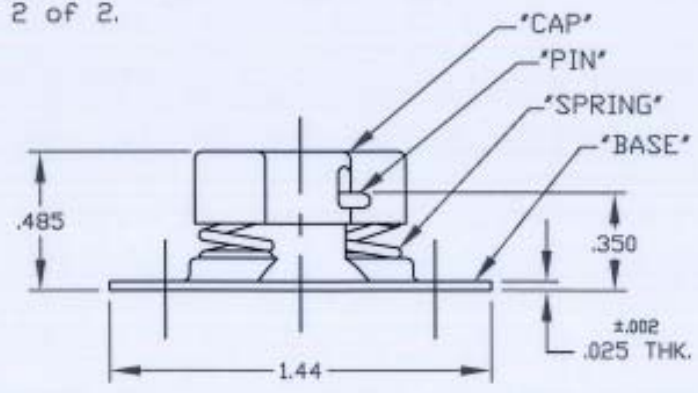
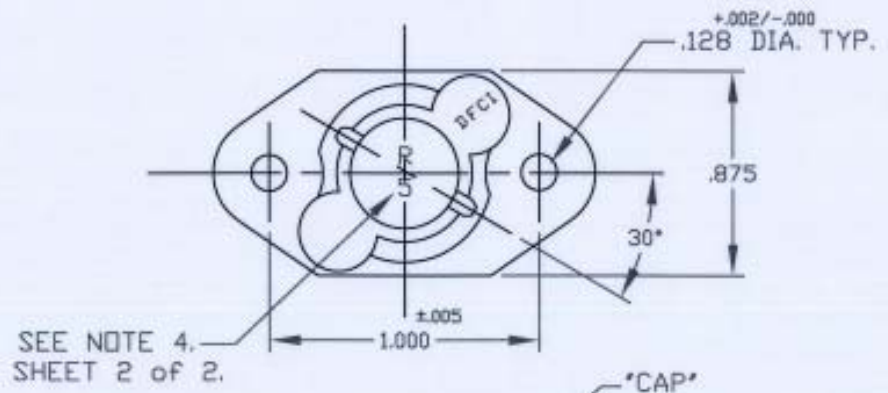



UNCONTROLLED

C2500 SHT. 1of2 REV. *B*

REVISIONS			
SYM	DESCRIPTION	DATE	APPROV
B	ADD SHT. 2 PER ECN 962	5-17-06	<i>R. OLSEN</i>



RECEPTACLE
ASSY. P/N
2500-18-C3C

MAT'L SEE SHT. 2, NOTE 1.	TOLERANCES ON DIMENSIONS UNLESS OTHERWISE SPECIFIED X* = ±2* .XX = ±.015 CONCENTRICITY F.I.M. .005 X/X = ±1/64 .XXX = ±.010 MACHINE FINISH 125/		 DFCI SOLUTIONS INC. 425 UNION BOULEVARD WEST ISLIP, NEW YORK 11795	
HEAT TREAT SEE SHT. 2, NOTE 1.	PART NO.	DRN <i>S. F. RAZDAR</i>	DATE 1-6-05	SU-2300 RECEPTACLE ASSY. 2500-18-C3C.
FINISH CADMIUM PLATE PER QQ-P-416, TYPE I, CLASS 2, CLEAR CHROMATE.		CHK <i>R. OLSEN</i>	DATE 5-17-06	
<small>THE FASTENER PARTS SHOWN IN THIS PRINT ARE PROPRIETARY ARTICLES TO WHICH DFCI SOLUTIONS INC. RETAINS THE EXCLUSIVE RIGHTS OF MANUFACTURE, USE AND SALE. THE PRINT OR DRAWING IS SUBMITTED IN CONFIDENCE AND DOES NOT CONVEY A LICENSE OR PERMISSION TO MANUFACTURE THE FASTENER OR FASTENER PARTS.</small> <small>© COPYRIGHT 2006, DFCI SOLUTIONS INC. ALL RIGHTS RESERVED.</small>	NEXT ASSY	USED ON	DATE 5-17-06	SIZE A FSCM NO 72794 DWG. NO. C2500 REV. B
	APPLICATION BLOCK	SALES	DATE 5-17-06	SCALE NTS WT. SHEET 1 OF 2

The parts shown in this print are proprietary articles to which DFCI Solutions, Inc. retains the exclusive rights of manufacture, use and sale. The print or drawing is submitted in confidence and does not convey a license or permission to manufacture the parts. Copyright © 2006 by DFCI Solutions, Inc. All rights reserved.


UNCONTROLLED

REVISIONS			
SYM	DESCRIPTION	DATE	APPROV
B	ADD SHT. 2 PER ECN 962	5-17-06	R. OLSEN

NOTES:

1. MATERIAL:
 "BASE" S.A.E 4130 STEEL, HEAT TREAT TO ROCKWELL C37-40.
 "PIN" & "SPRING" STEEL MUSIC WIRE.
 "CAP" PER S.A.E 1008/1010 STEEL.
2. FOR THE APPLICATION OF ALTERNATIVE FINISHES REMOVE THE SUFFIX -C3C AND ADD THE REQUIRED FINISH SUFFIX. "EXAMPLE 2500-18-Z3B".
3. PLEASE VISIT www.dfci.com/dzfinish.html FOR A LIST OF AVAILABLE FINISHES.
4. PART WILL BE MARKED AS SHOWN (R 5) UNTILL DEPLETION OF EXISTING STOCK. THEREAFTER PART WILL BE MARKED WITH FOLLOWING DESIGNATION "5".

RECEPTACLE
 ASSY. P/N
 2500-18-C3C

MATERIAL PER NOTE 1.		TOLERANCES ON DIMENSIONS UNLESS OTHERWISE SPECIFIED $X^{\circ} = \pm 2^{\circ}$.XX = $\pm .015$ CONCENTRICITY F.I.M. .005 $X/X = \pm 1/64$.XXX = $\pm .010$ MACHINE FINISH 125		 DFCI SOLUTIONS INC. 425 UNION BOULEVARD WEST ISLIP, NEW YORK 11795	
HEAT TREAT PER NOTE 1.		PART NO.	DRN	DATE	SU-2300 RECEPTACLE ASSY. 2500-18-C3C.
FINISH			CHK	DATE	
CADMIUM PLATE PER QQ-P-418, TYPE 1, CLASS 2, CLEAR CHROMATE.			ENG	DATE	
<small>THE FASTENER PARTS SHOWN IN THIS PRINT ARE PROPRIETARY ARTICLES TO WHICH DFCI SOLUTIONS INC. RETAINS THE EXCLUSIVE RIGHTS OF MANUFACTURE, USE AND SALE. THE PRINT OR DRAWING IS SUBMITTED IN CONFIDENCE AND DOES NOT CONVEY A LICENSE OR PERMISSION TO MANUFACTURE THE FASTENER OR FASTENER PARTS. © COPYRIGHT 2003, DFCI SOLUTIONS INC. ALL RIGHTS RESERVED.</small>		NEXT ASSY	USED ON	DATE	
DATE: 11/01/03 FORM: DRAWING		APPLICATION BLOCK	SALES	DATE	SIZE A FSCM NO 72794 DWG. NO. C2500 REV. B SCALE NTS WT. SHEET 2 OF 2