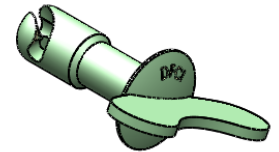
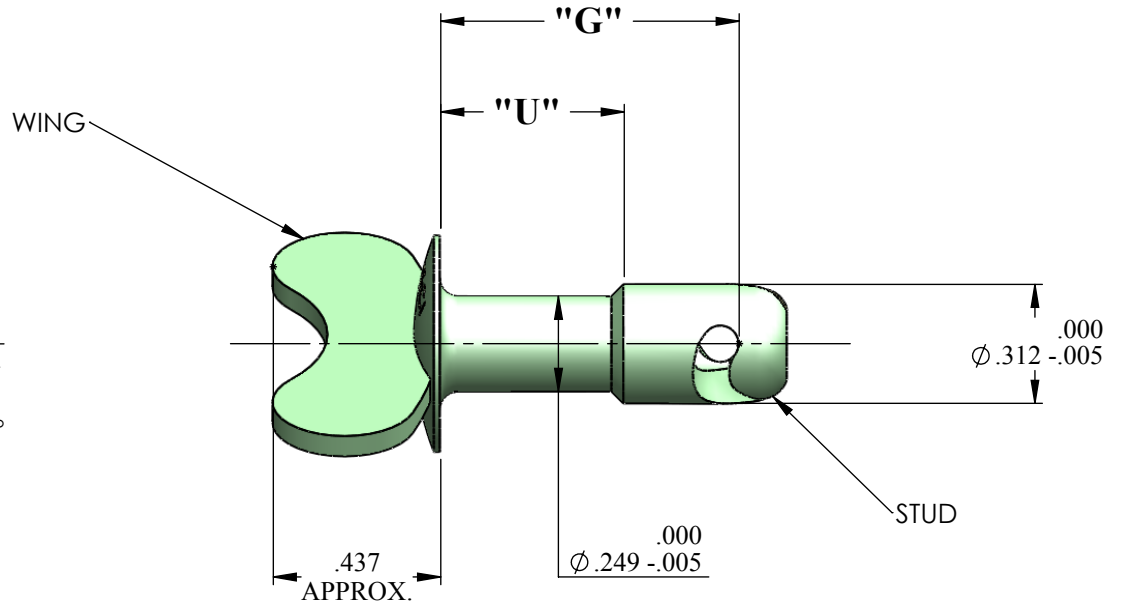
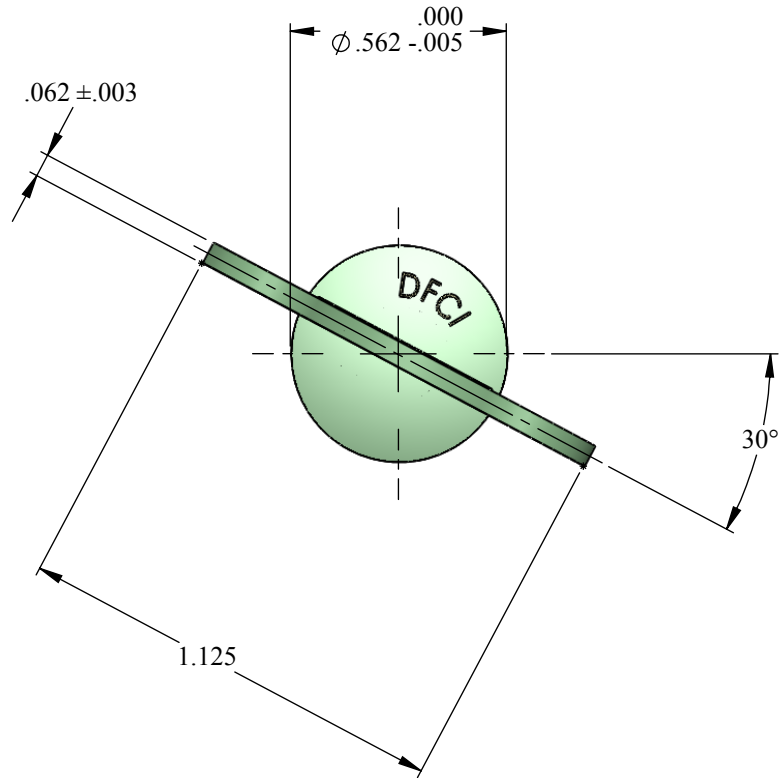


# UNCONTROLLED

REVISIONS			
SYS	DESCRIPTION	DATE	APPROV
C	PER ECN. 1168	02-21-12	



MATERIAL:	SEE NOTE 1
HEAT TREAT:	SEE NOTE 2
FINISH:	SEE NOTE 4
<p>THE FASTENER PARTS SHOWN IN THIS PRINT ARE PROPRIETARY ARTICLES TO WHICH DFCI SOLUTIONS INC., RETAINS THE EXCLUSIVE RIGHTS OF MANUFACTURE, USE AND SALE. THE PRINT OR DRAWING IS SUBMITTED IN CONFIDENCE AND DOES NOT CONVEY A LICENSE OR PERMISSION TO MANUFACTURE THE FASTENER OR FASTENER PARTS.</p> <p>(C) COPYRIGHT 2009, DFCI SOLUTIONS INC. ALL RIGHTS RESERVED.</p>	

TOLERANCES ON DIMENSIONS UNLESS OTHERWISE SPECIFIED			
X° = ±2°		.XX = ±.015	
X/X = ±1/32		.XXX = ±.010	
MACHINE FINISH = 125/7			
PART NO.	SEE TABLE	DRN	DATE
		Frank Basile	02-21-12
		CHK. Frank Basile	DATE 02-21-12
		ENG. Peter Altkobrand	DATE 02-21-12
		MFG. Rashm Lubman	DATE 02-21-12
		Q.C. Peter Altkobrand	DATE 02-21-12
NEXT ASSY	USED ON	SALES.	DATE



**DFCI SOLUTIONS INC.**  
425 UNION BOULEVARD.  
WEST ISLIP, NEW YORK 11795

**SU-2300 WING HEAD STUD**  
**2501-W20-\*\*-Z3CT**

SIZE	FSCM NO.	DWG. NO.	REV.
A	72794	C2501-W	C

SCALE: NTS      WEIGHT:      SHEET 1 OF 2

# UNCONTROLLED

REVISIONS

SYS	DESCRIPTION	DATE	APPROV
C	PER ECN. 1168	02-21-12	

PART NUMBER	"G"	"U"
2501-W20-5-Z3CT	.350	.170
2501-W20-8-Z3CT	.380	.210
2501-W20-11-Z3CT	.410	.250
2501-W20-14-Z3CT	.440	.250
2501-W20-17-Z3CT	.470	.290
2501-W20-20-Z3CT	.500	.330
2501-W20-23-Z3CT	.530	.370
2501-W20-26-Z3CT	.560	.370
2501-W20-29-Z3CT	.590	.410
2501-W20-32-Z3CT	.620	.450
2501-W20-35-Z3CT	.650	.490
2501-W20-38-Z3CT	.680	.490
2501-W20-41-Z3CT	.710	.530
2501-W20-44-Z3CT	.740	.570
2501-W20-47-Z3CT	.770	.610
2501-W20-50-Z3CT	.800	.610
2501-W20-53-Z3CT	.830	.650
2501-W20-56-Z3CT	.860	.690
2501-W20-59-Z3CT	.890	.690

**NOTES:**

**1. MATERIAL:**  
 STUD A.I.S.I. 8620 STEEL, TYPE 303 OR 17-4PH STAINLESS STEEL  
 WING C1010,C1008 - C1018 STEEL OR TYPE 302 STAINLESS

**2. HEAT TREATMENT:**

- A. STEEL STUD, ROCKWELL C30-38
- B. TYPE 303 STAINLESS STEEL STUD (NOT HEAT TREATED)
- C. TYPE 17-4 STAINLESS STEEL STUD, ROCKWELL C39-43
- D. STEEL OR STAINLESS STEEL WING (NOT HEAT TREATED)

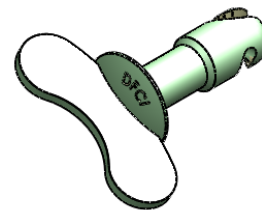
**3. PART NUMBER FOR A 300 SERIES STAINLESS STEEL STUD,**  
 REMOVE SUFFIX -Z3CT FROM PART NUMBER AND ADD "SS"  
 EXAMPLE - 2501-W20-14-SS

PART NUMBER FOR 17-4 SERIES STAINLESS STEEL STUD  
 REMOVE SUFFIX -Z3CT FROM PART NUMBER AND ADD "18S"  
 EXAMPLE - 2501-W20-14-18S

**4. FINISH:** ZINC PLATE PER ASTM-B-633. TYPE III, SC2, CLEAR TRIVALENT CHROMATE WITH SEALER.

**5. FOR ALTERNATIVE FINISHES,** REMOVE SUFFIX -Z3CT FROM PART NUMBER AND ADD THE REQUIRED FINISH SUFFIX.  
 EXAMPLE: 2501-W20-14-Z3YT

**6. PLEASE VISIT** WWW.DFCIS.COM/C2501-W FOR A LIST OF AVAILABLE FINISHES.



MATERIAL: SEE NOTE 1

HEAT TREAT: SEE NOTE 2

FINISH: SEE NOTE 4

TOLERANCES ON DIMENSIONS UNLESS OTHERWISE SPECIFIED

X\* = ±2\* .XX = ±.015  
 X/X = ±1/32 .XXX = ±.010 MACHINE FINISH = .125

PART NO.	DRN	DATE
SEE TABLE	Frank Basile	02-21-12
	Frank Basile	02-21-12
	Frank Alldredge	02-21-12
	Rashm Lubman	02-21-12
	Frank Alldredge	02-21-12



**DFCI SOLUTIONS INC.**

425 UNION BOULEVARD.  
 WEST ISLIP, NEW YORK 11795

TITLE SU-2300 WING HEAD STUD  
 2501-W20-\*\*-Z3CT

THE FASTENER PARTS SHOWN IN THIS PRINT ARE PROPRIETARY ARTICLES TO WHICH DFCI SOLUTIONS INC., RETAINS THE EXCLUSIVE RIGHTS OF MANUFACTURE, USE AND SALE. THE PRINT OR DRAWING IS SUBMITTED IN CONFIDENCE AND DOES NOT CONVEY A LICENSE OR PERMISSION TO MANUFACTURE THE FASTENER OR FASTENER PARTS.

(C) COPYRIGHT 2009, DFCI SOLUTIONS INC. ALL RIGHTS RESERVED.

NEXT ASSY	USED ON	G.C.	SALES.	DATE
				02-21-12

SIZE	FSCM NO	DWG. NO.	REV.
A	72794	C2501-W	C

SCALE: NTS WEIGHT: SHEET 2 OF 2