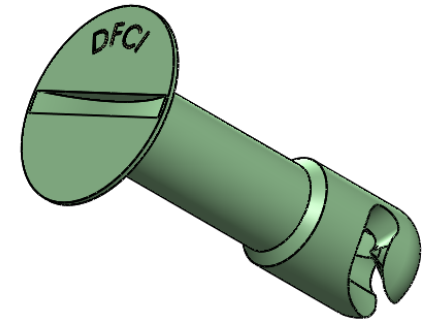
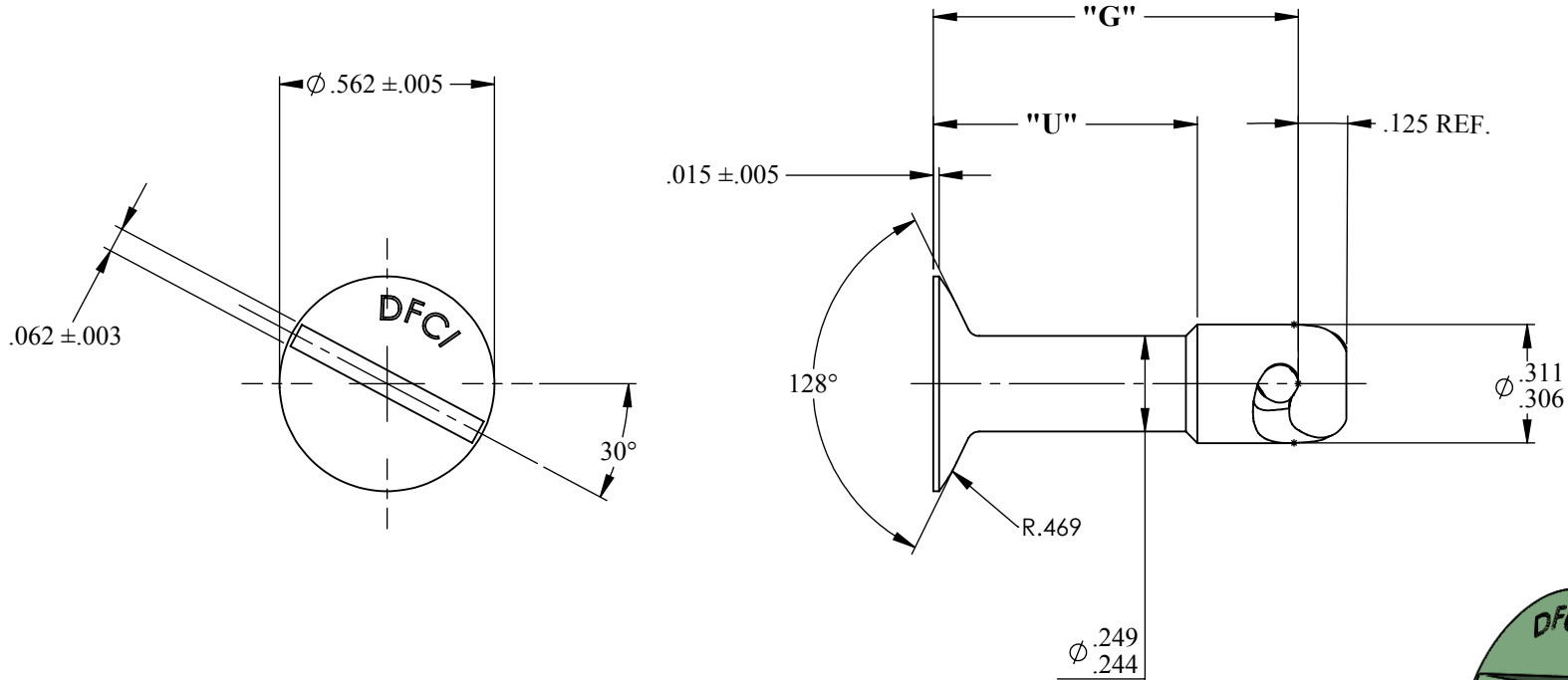


REVISIONS			
SYS	DESCRIPTION	DATE	APPROV
B	PER ENC 1168 & 1199	06-03-11	FB



UNCONTROLLED

MATERIAL:	A.I.S.I. 8620 STEEL
HEAT TREAT:	ROCKWELL C30 - 38
FINISH:	SEE NOTES ON SHEET 2 OF 2
<small>THE FASTENER PARTS SHOWN IN THIS PRINT ARE PROPRIETARY ARTICLES TO WHICH DFCI SOLUTIONS INC., RETAINS THE EXCLUSIVE RIGHTS OF MANUFACTURE, USE AND SALE. THE PRINT OR DRAWING IS SUBMITTED IN CONFIDENCE AND DOES NOT CONVEY A LICENSE OR PERMISSION TO MANUFACTURE THE FASTENER OR FASTENER PARTS.</small>	
<small>(C) COPYRIGHT 2009, DFCI SOLUTIONS INC. ALL RIGHTS RESERVED.</small>	

TOLERANCES ON DIMENSIONS UNLESS OTHERWISE SPECIFIED			
X* = ±2°	.XX = ±.015	MACHINE FINISH = 125/7	
X/X = ±1/32	.XXX = ±.010		
PART NO.	SEE TABLE	DRN	DATE
		Frank Basile	06-03-11
		CHK. Frank Basile	DATE 06-03-11
		ENG. Robert Altkorn	DATE 06-03-11
		MFG. Christopher Parnell	DATE 06-03-11
		G.C. Robert Altkorn	DATE 06-03-11
NEXT ASSY	USED ON	SALES.	DATE

		DFCI SOLUTIONS INC. 425 UNION BOULEVARD. WEST ISLIP, NEW YORK 11795	
TITLE SU-2300 SPECIAL SEALING HEAD STUD 2506-20-**-24-Z3CT			
SIZE	FSCM NO.	DWG. NO.	REV.
A	72794	C2506-24	B
SCALE: NTS		WEIGHT:	SHEET 1 OF 2


REVISIONS			
SYS	DESCRIPTION	DATE	APPROV
B	PER ECN 1168 & 1199	06-03-11	

PART NUMBER	G	U
2506-20-5-24-Z3CT	.350	.170
2506-20-8-24-Z3CT	.380	.210
2506-20-11-24-Z3CT	.410	.250
2506-20-14-24-Z3CT	.440	.250
2506-20-17-24-Z3CT	.470	.290
2506-20-20-24-Z3CT	.500	.330
*2506-20-21-24-Z3CT	.510	.330
2506-20-23-24-Z3CT	.530	.370
2506-20-26-24-Z3CT	.560	.370
*2506-20-27-24-Z3CT	.570	.410
2506-20-29-24-Z3CT	.590	.410
2506-20-32-24-Z3CT	.620	.450
2506-20-35-24-Z3CT	.650	.490
2506-20-38-24-Z3CT	.680	.490
2506-20-41-24-Z3CT	.710	.530
*2506-20-42-24-Z3CT	.720	.530
2506-20-44-24-Z3CT	.740	.570
*2506-20-46-24-Z3CT	.760	.570
2506-20-47-24-Z3CT	.770	.610
2506-20-50-24-Z3CT	.800	.610
*2506-20-51-24-Z3CT	.810	.650
2506-20-53-24-Z3CT	.830	.650
*2506-20-54-24-Z3CT	.840	.650
2506-20-56-24-Z3CT	.860	.690

NOTES:

- FINISH:** ZINC PLATE PER ASTM-B-633, TYPE III, SC2 CLEAR TRIVALENT CHROMATE WITH SEALER
- THE ABOVE MENTIONED FINISH WILL BE SUPPLIED AS THE STANDARD FINISH UPON DEPLETION OF EXISTING STOCK WHICH ARE FINISHED AS FOLLOWS: CADMIUM PLATE PER QQ-P-416, TYPE II, CLASS 2 YELLOW
- FOR THE APPLICATION OF ALTERNATIVE FINISHES, REMOVE SUFFIX -Z3CT FROM THE PART NUMBER AND ADD THE REQUIRED FINISH TO THE PART NUMBER. EXAMPLE: FOR ZINC YELLOW TRIVALENT CHROMATE WITH SEALER, THE PART NUMBER WOULD BE 2506-20-5-24-Z3YT
- PLEASE VISIT www.dfci.com/c2506 FOR A LIST OF AVAILABLE FINISHES.
- * PART NUMBERS MARKED WITH AN ASTERISK ARE DISCONTINUED, PLEASE SELECT THE NEXT LONGEST LENGTH.

UNCONTROLLED

MATERIAL: A.I.S.I. 8620 STEEL	TOLERANCES ON DIMENSIONS UNLESS OTHERWISE SPECIFIED X* = ±2* .XX = ±.015 X/X = ±1/32 .XXX = ±.010 MACHINE FINISH = .125		 <p>DFCI SOLUTIONS INC. 425 UNION BOULEVARD. WEST ISLIP, NEW YORK 11795</p>	<p>TITLE: SU-2300 SPECIAL SEALING HEAD STUD 2506-20-**-24-Z3CT</p>	
HEAT TREAT: ROCKWELL C30 - 38	PART NO. SEE TABLE	DRN <i>Frank Basile</i> DATE 06-03-11			
FINISH: SEE NOTES ON SHEET 2 OF 2		CHK. <i>Frank Basile</i> DATE 06-03-11	<p>SIZE: A FSCM NO. 72794 DWG. NO. C2506-24 REV. B</p> <p>SCALE: NTS WEIGHT: SHEET 2 OF 2</p>		
<p><small>THE FASTENER PARTS SHOWN IN THIS PRINT ARE PROPRIETARY ARTICLES TO WHICH DFCI SOLUTIONS INC., RETAINS THE EXCLUSIVE RIGHTS OF MANUFACTURE, USE AND SALE. THE PRINT OR DRAWING IS SUBMITTED IN CONFIDENCE AND DOES NOT CONVEY A LICENSE OR PERMISSION TO MANUFACTURE THE FASTENER OR FASTENER PARTS.</small></p> <p>(C) COPYRIGHT 2009, DFCI SOLUTIONS INC. ALL RIGHTS RESERVED.</p>	<p>ENG. <i>Robert Alldred</i> DATE 06-03-11</p> <p>MFG. <i>Charles J. Parnell</i> DATE 06-03-11</p> <p>G.C. <i>Robert Alldred</i> DATE 06-03-11</p>	<p>SALES. DATE</p>			
	<p>NEXT ASSY USED ON</p> <p>APPLICATION BLOCK</p>				