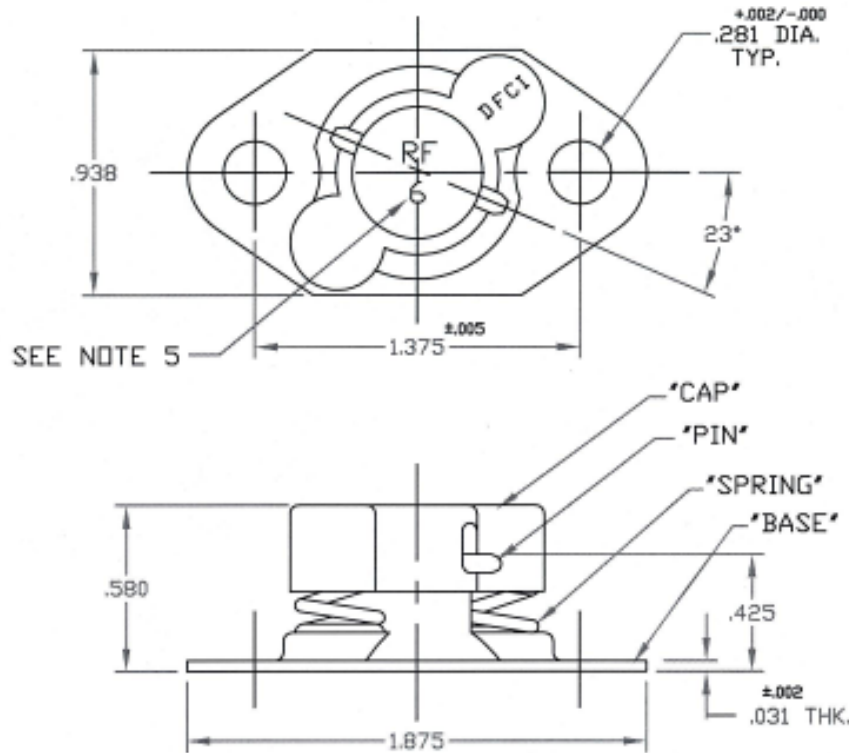


UNCONTROLLED

C2600F SHT. 1 of 2 REV. B

REVISIONS			
SYM	DESCRIPTION	DATE	APPROV
B	CHNG FINISH PER ECN 1090	6-3-08	R.C.



SEE NOTE 5

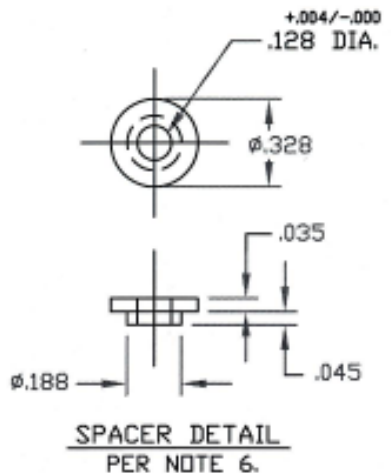
FOR PART NO. REFER TO SHEET 2 of 2.

MAT'L PER NOTE 2.	TOLERANCES ON DIMENSIONS UNLESS OTHERWISE SPECIFIED X* = ±2* .XX = ±.015 X/X = ±1/32 .XXX = ±.010		MACHINE FINISH 125/T		DFCI SOLUTIONS INC. 425 UNION BOULEVARD WEST ISLIP, NEW YORK 11795
HEAT TREAT PER NOTE 2.	PART NO.	DRN S. FRANZ	DATE 1-13-05	SU-2300 RECEPTACLE ASSY. 2600-18F-Z3CT.	
FINISH ZINC PLATE PER NOTE 1.		CHK F. Basil	DATE 6-4-08	SIZE A FSCM NO 72794 DWG. NO. C2600F REV. B SCALE NTS WT. SHEET 1 OF 2	
<small>THE FASTENER PARTS SHOWN IN THIS PRINT ARE PROPRIETARY ARTICLES TO WHICH DFCE SOLUTIONS INC. RETAINS THE EXCLUSIVE RIGHTS OF MANUFACTURE, USE AND SALE. THE PRINT OR DRAWING IS SUBMITTED IN CONFIDENCE AND DOES NOT CONVEY A LICENSE OR PERMISSION TO MANUFACTURE THE FASTENER OR FASTENER PARTS.</small> <small>© COPYRIGHT 2008, DFCE SOLUTIONS INC. ALL RIGHTS RESERVED.</small>	NEXT ASSY	USED ON	ENG C. Colson DATE 6-4-08 MFC Bill Vite DATE 6-4-08 QC B. Hildebrand DATE 6/4/08		
DATE: 07/01/06 FORM: DRAWING	APPLICATION BLOCK	SALES	DATE		

The parts shown in this print are proprietary articles to which DFCI Solutions, Inc. retains the exclusive rights of manufacture, use and sale. The print or drawing is submitted in confidence and does not convey a license or permission to manufacture the parts. Copyright © 2008 by DFCI Solutions, Inc. All rights reserved.

UNCONTROLLED

REVISIONS			
SYM	DESCRIPTION	DATE	APPROV
B	CHNG FINISH PER ECN 1090	6-3-08	R.C.



SPACER DETAIL
PER NOTE 6.

SPACER P/N	MATERIAL
2600-18F-5-Z3CT	PER A.I.S.I 1117 DR 1215, STEEL.

RECEPTACLE
ASSY. P/N
2600-18F-Z3CT

NOTES:

- FINISH:
ZINC PLATE PER ASTM-B-633, TYPE III, SC 2, CLEAR TRIVALENT CHROMATE WITH SEALER. (RoHS COMPLIANT) FINISH SUFFIX: -Z3CT
THE ABOVE MENTIONED FINISH WILL BE SUPPLIED AS THE STANDARD FINISH, UPON DEPLETION OF EXISTING STOCK WHICH ARE FINISHED AS FOLLOWS: CADMIUM PLATE PER QQ-P-416, TYPE I, CLASS 2, CLEAR CHROMATE. FINISH SUFFIX -C3C.
- MATERIAL:
BASE S.A.E 4130 STEEL, HEAT TREAT TO ROCKWELL C37-40.
PIN & *SPRING* STEEL MUSIC WIRE.
CAP PER S.A.E 1008/1010 STEEL.
- FOR THE APPLICATION OF ALTERNATIVE FINISHES, REMOVE SUFFIX -Z3CT FROM THE PART NO. AND ADD THE REQUIRED FINISH TO THE PART NO. SUFFIX. *EXAMPLE FOR BLACK ZINC TRIVALENT CHROMATE FINISH, THE PART NO. IS 2600-18F-Z3BT
- PART WILL BE MARKED AS SHOWN (RF 6) UNTILL DEPLETION OF EXISTING STOCK. THEREAFTER PART WILL BE MARKED WITH FOLLOWING DESIGNATION * F6 *
- TWO (2) SPACERS P/N 2600-18F-5-Z3CT ARE SUPPLIED W/EACH 2600-18F-Z3CT RECEPTACLE.
- PLEASE VISIT WWW.DFCIS.COM/C2600F FOR A LIST OF AVAILABLE FINISHES.

MAT'L PER NOTE 2.	TOLERANCES ON DIMENSIONS UNLESS OTHERWISE SPECIFIED X' = ±2" .XX = ± .015 X/X = ±1/32 .XXX = ± .010		MACHINE FINISH 125T		DFCI SOLUTIONS INC. 425 UNION BOULEVARD WEST ISLIP, NEW YORK 11795
HEAT TREAT PER NOTE 2.	PART NO.	DRN S. FRANCES	DATE 1-13-05	REV.	
FINISH ZINC PLATE PER NOTE 1.		CHK F. Basil	DATE 6-9-08	FILE	
		ENG B. J. Nelson	DATE 6-4-08	SU-2300 RECEPTACLE ASSY. 2600-18F-Z3CT.	
		MFR B. J. Nelson	DATE 6-4-08	SIZE	
	NEXT ASSY	USED ON	DATE	FSCM NO. 72794	
				DWG. NO. C2600F	
	APPLICATION BLOCK	SALES	DATE	REV. B	
				SCALE NTS	
				WT.	
				SHEET 2 OF 2	