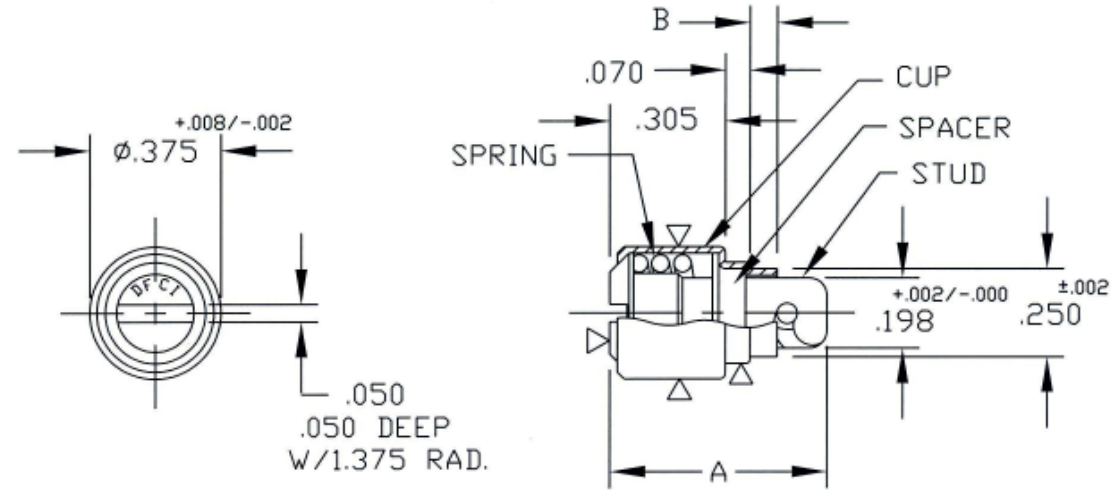


UNCONTROLLED

C3500-325 SHT. 1 of 2 REV. E

REVISIONS			
SYM	DESCRIPTION	DATE	APPROV
E	CHNG NOTE 2 PER ECN 1149.	6-18-09	<i>FB</i>



FOR PART NO. REFER TO SHEET 2 of 2.

MAT'L PER NOTE 1.	TOLERANCES ON DIMENSIONS UNLESS OTHERWISE SPECIFIED X = ±2° .XX = ±.015 X/X = ±1/32 .XXX = ±.010		MACHINE FINISH .125		DFCI SOLUTIONS INC. 425 UNION BOULEVARD WEST ISLIP, NEW YORK 11795	
	HEAT TREAT STUD=ROCKWELL C31-38.	PART NO.	DRN S. F. <i>[Signature]</i>	DATE 12-15-03	TITLE PA-3500 LINSTUD ASSY. 3500-325-xx-xxx.	
FINISH PER NOTE 2.		CHK <i>[Signature]</i>	DATE 6-18-09	ENG <i>[Signature]</i>	DATE 6/18/09	SIZE A
		MFG <i>[Signature]</i>	DATE 6/18/09	OC <i>[Signature]</i>	DATE 6/18/09	FSCM NO 72794
	NEXT ASSY	USED ON	SALES	DATE	DWG. NO. C3500-325	REV. E
APPLICATION BLOCK		DATE	SCALE NTS	WT.	SHEET 1 OF 2	

DATE: 07/01/06 FORM: DRAWING

The parts shown in this print are proprietary articles to which DFCI Solutions, Inc. retains the exclusive rights of manufacture, use and sale. The print or drawing is submitted in confidence and does not convey a license or permission to manufacture the parts. Copyright © 2009 by DFCI Solutions, Inc. All rights reserved.

UNCONTROLLED

REVISIONS			
SYM	DESCRIPTION	DATE	APPROV
E	CHNG NOTE 2 PER ECN 1149.	6-18-09	

NOTES:

1. MATERIAL:

CUP- 6061 ALUMINUM PER QQ-A-225/8
 SPACER- A.I.S.I. C1095 STEEL (HEAT TREAT
 ROCKWELL C45 - 50)
 SPRING- MUSIC WIRE PER ASTM A 228
 STUD- A.I.S.I. 8620 OR 4037 STEEL.

2. FINISH:

-AS1B SUFFIX
 CUP - ANODIZE PER MIL-A-8625A (BLACK)
 SPACER & SPRING: ZINC PLATE PER ASTM-B-633 TYPE III SC2
 CLEAR TRIVALENT CHROMATE WITH SEALER.
 THE ABOVE MENTIONED FINISH WILL BE SUPPLIED AS THE STANDARD
 FINISH, UPON DEPLETION OF EXISTING STOCK WHICH IS CADMIUM
 PLATE WITH CHROMATE PER QQ-P-416.

STUD: AS1B SUFFIX
 ZINC PLATE PER ASTM-B-633 TYPE II SC2, BLACK CHROMATE.

STUD: EEGT OR EEMBT SUFFIX
 ZINC PLATE PER ASTM-B-633 TYPE III SC2, CLEAR
 TRIVALENT CHROMATE W/NO SEALER.

-EEGT SUFFIX

GRAY EPOXY WITH GRAY EPOXY ENAMEL, COLOR NO. 36118.
 IS APPLIED OVER ZINC PLATE PER ASTM-B-633, TYPE III,
 SC 2, TRIVALENT CLEAR CHROMATE W/NO SEALER.

-EEMBT SUFFIX

MEDIUM BROWN EPOXY WITH BROWN EPOXY ENAMEL,
 COLOR BEING BROWN. COLOR NO. BAC8328.
 IS APPLIED OVER ZINC PLATE PER ASTM-B-633, TYPE III,
 SC 2, TRIVALENT CLEAR CHROMATE W/NO SEALER.

3. WHEN EPOXY IS APPLIED, ONLY SURFACES MARKED WITH
 ▽ ARE COVERED.

4. PLEASE VISIT WWW.DFCIS.COM/C3500-325 FOR A
 LIST OF AVAILABLE FINISHES.

STUD ASSY. PART NO.	COLOR (SEE NOTE 2 & 3)	A	B	WEIGHT (LBS.)	PANEL THICKNESS RANGE.
3500-325-45-AS1B	BLACK	.61	.078	.0073	.060 - .069
3500-325-45-EEMBT	MED. BROWN EPOXY				
3500-325-45-EEGT	GRAY EPOXY				
3500-325-51-AS1B	BLACK	.67	.136	.0079	.120 - .129
3500-325-51-EEMBT	MED. BROWN EPOXY				
3500-325-51-EEGT	GRAY EPOXY				

MAT'L PER NOTE 1.	TOLERANCES ON DIMENSIONS UNLESS OTHERWISE SPECIFIED $X = \pm 2^*$.XX = $\pm .015$ $X/X = \pm 1/32$.XXX = $\pm .010$ MACHINE FINISH .125		DFCI SOLUTIONS INC. 425 UNION BOULEVARD WEST ISLIP, NEW YORK 11795	
HEAT TREAT STUD=ROCKWELL C31-38.	PART NO.	DRN S. FRANKO DATE 12-15-03	TITLE PA-3500 LINSTUD ASSY. 3500-325-xx-xxx.	
FINISH PER NOTE 2.		CHK F. Basile DATE 6-18-09	SIZE A	FSCM NO 72794
		ENG B. Hildner DATE 6/18/09	DWG. NO. C3500-325	REV. E
		MFG S. Franko DATE 6/18/09	SCALE NTS	WT.
	NEXT ASSY	USED ON	SHEET 2 OF 2	
	APPLICATION BLOCK	SALES		

DATE: 07/01/06 FORM: DRAWING