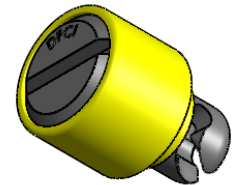
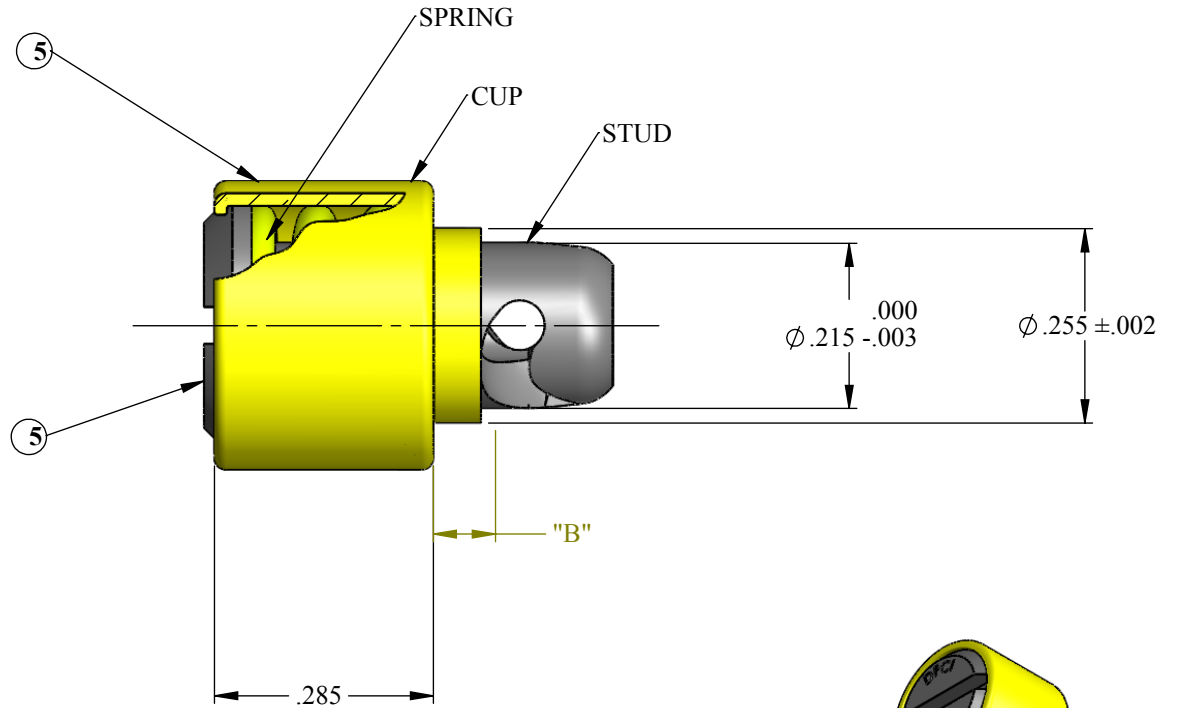
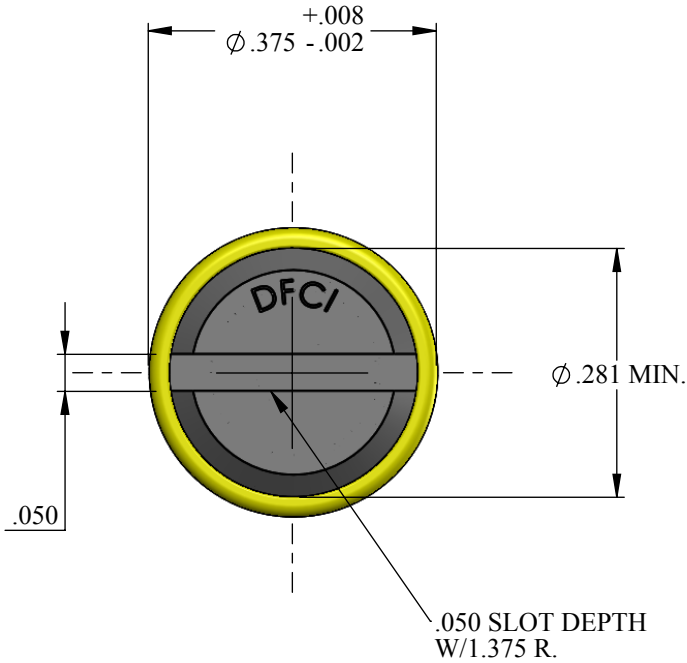


REVISIONS			
SYS	DESCRIPTION	DATE	APPROV
A	PER ECN 845 & 1168	12-01-11	



UNCONTROLLED

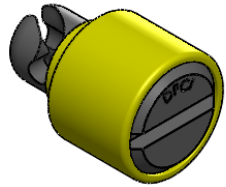
MATERIAL:	SEE NOTE 1
HEAT TREAT:	SEE NOTE 2
FINISH:	SEE NOTE 3
<small>THE FASTENER PARTS SHOWN IN THIS PRINT ARE PROPRIETARY ARTICLES TO WHICH DFCI SOLUTIONS INC., RETAINS THE EXCLUSIVE RIGHTS OF MANUFACTURE, USE AND SALE. THE PRINT OR DRAWING IS SUBMITTED IN CONFIDENCE AND DOES NOT CONVEY A LICENSE OR PERMISSION TO MANUFACTURE THE FASTENER OR FASTENER PARTS.</small>	
<small>(C) COPYRIGHT 2009, DFCI SOLUTIONS INC. ALL RIGHTS RESERVED.</small>	

TOLERANCES ON DIMENSIONS UNLESS OTHERWISE SPECIFIED			
$X^* = \pm 2^\circ$		$.XX = \pm .015$	
$X/X = \pm 1/32$		$.XXX = \pm .010$	
MACHINE FINISH = 125			
PART NO.	SEE TABLE	DRN	DATE
		Frank Basile	12-01-11
		CHK. Frank Basile	12-01-11
		ENG. Peter Alldread	12-01-11
		MFG. Rashm Lubman	12-01-11
		G.C. Peter Alldread	12-01-11
NEXT ASSY	USED ON	SALES.	DATE



DFCI SOLUTIONS INC.
425 UNION BOULEVARD.
WEST ISLIP, NEW YORK 11795

TITLE			
PA-3500 LINE STUD ASSEMBLY 3501-**-241225-Z3CT			
SIZE	FSCM NO.	DWG. NO.	REV.
A	72794	C3501-241225	A
SCALE: NTS		WEIGHT:	SHEET 1 OF 2



REVISIONS			
SYS	DESCRIPTION	DATE	APPROV
A	PER ECN 845 & 1168	12-01-11	

NOTES:

- MATERIAL:**
 STUD: A.I.S.I. 4130 STEEL
 SPRING: MUSIC WIRE PER ASTM-A-228
 CUP: A.I.S.I. 1008, 1010, OR 8620
- HEAT TREAT:**
 STUD: ROCKWELL C30-38
- FINISH:** ZINC PLATE PER ASTM-B-633, TYPE III, SC2, CLEAR TRIVALENT CHROMATE WITH SEALER. (ROHS COMPLIANT)
- FOR THE APPLICATION OF ALTERNATIVE FINISHES, REMOVE SUFFIX Z3CT FROM THE PART NUMBER AND ADD THE REQUIRED FINISH TO THE PART NUMBER.
 EXAMPLE: FOR YELLOW ZINC TRIVALENT CHROMATE FINISH, THE PART NUMBER IS 3501-38-241225-Z3YT
- WHEN EPOXY PAINT IS APPLIED, ONLY THE SURFACES MARKED WITHⓈARE COVERED.
- PLEASE VISIT WWW.DFCIS.COM/C3501-241225 FOR A LIST OF AVAILABLE FINISHES.

ASSEMBLY PART NUMBER	PANEL THICKNESS RANGE	"B" DIMENSION
3501-38-241225-Z3CT	.060-.069	.080
3501-39-241225-Z3CT	.070-.079	.090
3501-40-241225-Z3CT	.080-.089	.100
3501-41-241225-Z3CT	.090-.099	.110
3501-42-241225-Z3CT	.100-.109	.120
3501-43-241225-Z3CT	.110-.119	.130
3501-44-241225-Z3CT	.120-.129	.140

UNCONTROLLED

MATERIAL: SEE NOTE 1	TOLERANCES ON DIMENSIONS UNLESS OTHERWISE SPECIFIED X* = ±2° .XX = ±.015 X/X = ±1/32 .XXX = ±.010 MACHINE FINISH = .125			
HEAT TREAT: SEE NOTE 2	PART NO. SEE TABLE	DRN <i>Frank Basile</i>	DATE 12-01-11	
FINISH: SEE NOTE 3		CHK. <i>Frank Basile</i>	DATE 12-01-11	
		ENG. <i>Robert Altabrand</i>	DATE 12-01-11	
		MFG. <i>Rashid Lubman</i>	DATE 12-01-11	
		G.C. <i>Robert Altabrand</i>	DATE 12-01-11	
	NEXT ASSY	USED ON	SALES.	
	APPLICATION BLOCK			



DFCI SOLUTIONS INC.
 425 UNION BOULEVARD.
 WEST ISLIP, NEW YORK 11795

TITLE PA-3500 LINE STUD ASSEMBLY 3501-**-241225-Z3CT			
SIZE A	FSCM NO. 72794	DWG. NO. C3501-241225	REV. A
SCALE: NTS		WEIGHT:	SHEET 2 OF 2