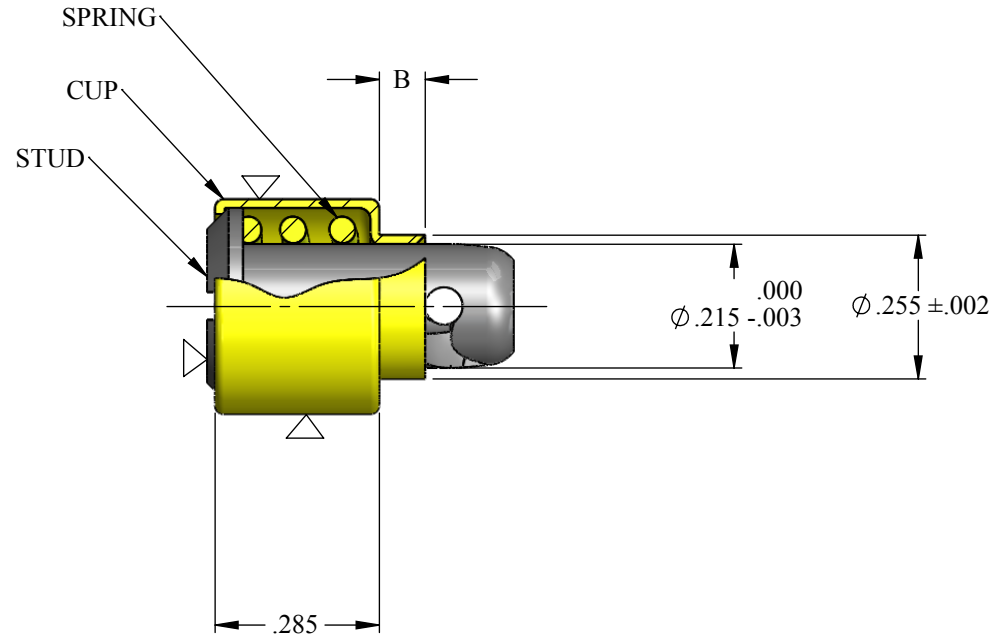
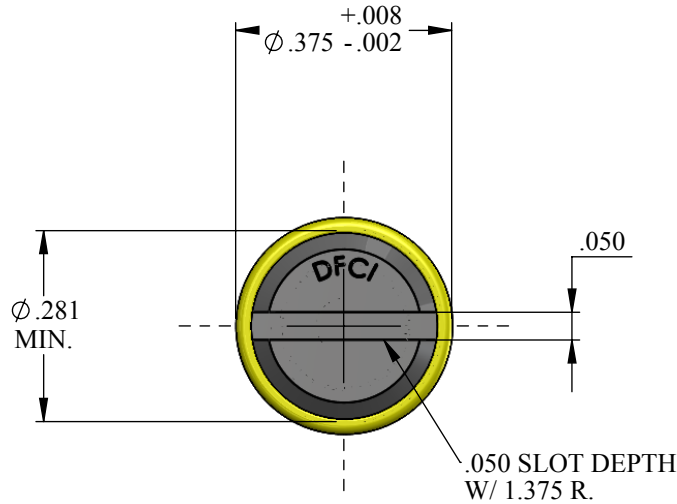


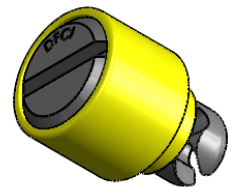
UNCONTROLLED


REVISIONS			
SYS	DESCRIPTION	DATE	APPROV
E	PER ECN 1256	1/29/15	



NOTES:

1. MATERIAL: STUD -A.I.S.I. 4037, C1118, C1117, OR 8620 STEEL.
CUP -A.I.S.I. 1008,1010,1215, OR 8620 STEEL.
SPRING -MUSIC WIRE PER ASTM A 228
2. PART NUMBERS FOLLOWED BY -241659-** WILL BE PAINTED ACCORDING TO THE SPECIFICATIONS LISTED.
3. COATINGS ARE APPLIED TO SURFACES MARKED WITH \triangle
4. ALL PARTS ARE PAINTED BY A ROCKWELL INTERNATIONAL APPROVED VENDOR.
5. STUD CAMS ARE 100% DEBURRED.




MATERIAL: SEE NOTE 1	TOLERANCES ON DIMENSIONS UNLESS OTHERWISE SPECIFIED X* = ±2% .XX = ±.015 X/X = ±1/32 .XXX = ±.010 MACHINE FINISH = 125/7			 DFCI SOLUTIONS INC. 425 UNION BOULEVARD. WEST ISLIP, NEW YORK 11795	
HEAT TREAT: STUD=ROCKWELL C30-38	PART NO. SEE TABLES	DRN <i>Frank Basile</i> 04-12-12	DATE 04-12-12		
FINISH: NOTED-SEE TABLES		CHK. <i>Frank Basile</i> 04-12-12	DATE 04-12-12	SIZE A FSCM NO. 72794	DWG. NO. C3501-241659
THE FASTENER PARTS SHOWN IN THIS PRINT ARE PROPRIETARY ARTICLES TO WHICH DFCI SOLUTIONS INC., RETAINS THE EXCLUSIVE RIGHTS OF MANUFACTURE, USE AND SALE. THE PRINT OR DRAWING IS SUBMITTED IN CONFIDENCE AND DOES NOT CONVEY A LICENSE OR PERMISSION TO MANUFACTURE THE FASTENER OR FASTENER PARTS. (C) COPYRIGHT 2009, DFCI SOLUTIONS INC. ALL RIGHTS RESERVED.		ENG. <i>Robert Alldorand</i> 04-12-12	DATE 04-12-12	REV. E	
		MFG. <i>Rashm Leeban</i> 04-12-12	DATE 04-12-12	SCALE: NTS	WEIGHT:
	NEXT ASSY	USED ON	G.C. <i>Robert Alldorand</i> 04-12-12	DATE 04-12-12	SHEET 1 OF 5
	APPLICATION BLOCK	SALES.			



UNCONTROLLED

REVISIONS			
SYS	DESCRIPTION	DATE	APPROV
E	PER ECN 1256	1/29/15	

REF.	SUFFIX	FINISH DESCRIPTION	SPECIFICATION
A	EEBX	BLACK EPOXY .0006 MIN. THICKNESS WITH BLACK EPOXY ENAMEL .0003 MIN. THICKNESS, BLACK EPOXY AND ENAMEL COLOR #37038. APPLIED OVER ZINC PLATE TYPE II, SC2, YELLOW CHROMATE	MIL-P-23377 MIL-C-22750 FED-STD-595 ASTM-B-633
B	EEGX	GRAY EPOXY .0006 MIN. THICKNESS WITH GRAY EPOXY ENAMEL .0003 MIN. THICKNESS, GRAY COLOR NUMBER 36118, APPLIED OVER ZINC PLATE TYPE II, SC2, YELLOW CHROMATE	
C	BBG1	ZINC PLATE PER ASTM-B-633, TYPE II, SC 2, YELLOW CHROMATE. APPLY ONE ADDITIONAL COAT EPOXY PRIMER FOLLOWED BY EPOXY TOP COAT, GRAY COLOR NUMBER R/C 239 ROCKWELL COLLINS PART NUMBER 580-0709-028 #239 BOMBARDIER GRAY CONTROL DOCUMENT 4-15-015L94GY	ASTM-B-633 MIL-P-23377 MIL-PRF-85285
D	ETB	EPOXY RESIN PRIMER & ONE COAT OF THERMOSETTING COLOR COAT. LUSTERLESS BLACK, COLOR NUMBER 37038 OVER ZINC PLATE TYPE II, SC2 YELLOW CHROMATE.	PROCESS CONTROL DOCUMENT 4-04-0525 FED-STD-595 ASTM-B-633
E	EEMBX	MEDIUM BROWN EPOXY, .0006 MIN. THICKNESS WITH MEDIUM BROWN EPOXY ENAMEL .0003 MIN. THICKNESS. COLOR BOEING BROWN BAC8328, APPLIED OVER ZINC PLATE TYPE II, SC2 YELLOW CHROMATE	MIL-P-23377 MIL-C-22750 ASTM-B-633 BAC8328

MATERIAL: SEE NOTE 1	TOLERANCES ON DIMENSIONS UNLESS OTHERWISE SPECIFIED X* = ±2° .XX = ±.015 X/X = ±1/32 .XXX = ±.010 MACHINE FINISH = .125				 DFCI SOLUTIONS INC. 425 UNION BOULEVARD. WEST ISLIP, NEW YORK 11795				
HEAT TREAT: STUD=ROCKWELL C30-38	PART NO. SEE TABLES	DRN. <i>Frank Basile</i>	DATE 04-12-12	CHK. <i>Frank Basile</i>				DATE 04-12-12	TITLE PA-3500 LINE PAINTED STUD ASSEMBLIES 3501-**-241659-**
FINISH: NOTED-SEE TABLES		ENG. <i>Robert Altkorn</i>	DATE 04-12-12	MFG. <i>Rashm Leebam</i>	DATE 04-12-12				
THE FASTENER PARTS SHOWN IN THIS PRINT ARE PROPRIETARY ARTICLES TO WHICH DFCI SOLUTIONS INC., RETAINS THE EXCLUSIVE RIGHTS OF MANUFACTURE, USE AND SALE. THE PRINT OR DRAWING IS SUBMITTED IN CONFIDENCE AND DOES NOT CONVEY A LICENSE OR PERMISSION TO MANUFACTURE THE FASTENER OR FASTENER PARTS. (C) COPYRIGHT 2009, DFCI SOLUTIONS INC. ALL RIGHTS RESERVED.	NEXT ASSY	USED ON	G.C. <i>Robert Altkorn</i>	DATE 04-12-12	SALES.	DATE 04-12-12			
	APPLICATION BLOCK				SIZE A	FSCM NO. 72794	DWG. NO. C3501-241659	REV. E	
					SCALE: NTS	WEIGHT:	SHEET 2 OF 5		



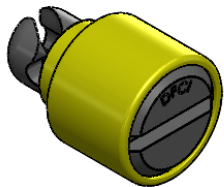
UNCONTROLLED

REVISIONS			
SYS	DESCRIPTION	DATE	APPROV
E	PER ECN 1256	1/29/15	

REF.	SUFFIX	FINISH DESCRIPTION	SPECIFICATION
F	ETR	ZINC PLATE PER ASTM-B-633, TYPE II, SC2, YELLOW CHROMATE. APPLY ONE ADDITIONAL COAT EPOXY RESIN PRIMER AND ONE COAT OF THERMOSETTING COLOR COAT. LUSTERLESS BROWN BOEING COLOR NUMBER BAC8328, PER D-14080 COATING MATERIALS AND APPLICATION PROCESSES CONTROLLED PER PROCESS CONTROL DOCUMENT 4-04-0525	ASTM-B-633 TYPE II, SC2, YELLOW CHROMATE COLOR # BAC703 PER D-14080, CONTROL DOCUMENT 4-04-0525
G	ETG	ZINC PLATE TYPE II, SC2 YELLOW CHROMATE, APPLY ONE ADDITIONAL COAT EPOXY RESIN PRIMER AND ONE COAT OF THERMOSETTING COLOR COAT, LUSTERLESS GRAY, BOEING COLOR BAC703 PER D-14080, COATING MATERIALS AND APPLICATION PROCESSES CONTROLLED PER PROCESS CONTROL DOCUMENT 4-04-0525	ASTM-B-633, TYPE II, SC2 OR SC3 YELLOW CHROMATE COLOR NUMBER BAC703 PER D-14080, CONTROL DOCUMENT 4-04-0525
H	SGMX	ZINC PLATE TYPE II, SC2 YELLOW CHROMATE, EPOXY PRIME COAT FOLLOWED BY EPOXY TOPCOAT. COLOR: SILVER GRAY METALLIC, COLOR CHIP PART NUMBER 074-0103-000, COLOR CONTROL STANDARD 580-6553	074-0103-000 580-6553 PROCESS STANDARD ASTM-B-633
J	GBL	GRAY SEMI-GLOSS HI-SPEED LACQUER, FLEXIBLE LACQUER, ADAMS NUMBER 25, GUNMETAL OVER ZINC PLATE YELLOW CHROMATE, TYPE II, SC2.	BAC NUMBER. 721 BAC NAME. GRAY ASTM-B-633 PART NUMBER 4-15-015L61GY
K	FGE	CHROMATE EPOXY PRIME COAT, FOLLOWED BY EPOXY TOP COAT, COLOR: FLAT GRAY, COLOR NUMBER 243 PER COLOR CHIP PART NUMBER 074-0100-520, COLOR CONTROL STANDARD 580-6553	074-0100-520 580-6553 PROCESS STANDARD
L	BGE1	ZINC PLATE PER ASTM-B-633, TYPE II, SC2 YELLOW CHROMATE. APPLY ONE ADDITIONAL COAT EPOXY PRIMER FOLLOWED BY EPOXY TOP COAT: BLUE GRAY COLOR NUMBER 182 PER COLOR CHIP PART NUMBER 074-0101-960; COLOR CONTROL STANDARD 580-0165-013	074-0101-960 ASTM-B-633 MIL-P-23377 580-0165-013

MATERIAL: SEE NOTE 1	TOLERANCES ON DIMENSIONS UNLESS OTHERWISE SPECIFIED X* = ±2° .XX = ±.015 X/X = ±1/32 .XXX = ±.010 MACHINE FINISH = .125/		
HEAT TREAT: STUD=ROCKWELL C30-38	PART NO. SEE TABLES	DRN <i>Frank Basile</i> DATE 04-12-12	CHK. <i>Frank Basile</i> DATE 04-12-12
FINISH: NOTED-SEE TABLES		ENG. <i>Frank Basile</i> DATE 04-12-12	MFG. <i>Rashm Lubman</i> DATE 04-12-12
THE FASTENER PARTS SHOWN IN THIS PRINT ARE PROPERTY ARTICLES TO WHICH DFCS SOLUTIONS INC., RETAINS THE EXCLUSIVE RIGHTS OF MANUFACTURE, USE AND SALE. THE PRINT OF DRAWING IS SUBMITTED IN CONFIDENCE AND DOES NOT CONVEY A LICENSE OR PERMISSION TO MANUFACTURE THE FASTENER OR FASTENER PARTS. (C) COPYRIGHT 2009, DFCS SOLUTIONS INC. ALL RIGHTS RESERVED.	NEXT ASSY	USED ON	G.C. <i>Frank Basile</i> DATE 04-12-12
	APPLICATION BLOCK		SALES. DATE


 DFCI SOLUTIONS INC. 425 UNION BOULEVARD. WEST ISLIP, NEW YORK 11795	
TITLE PA-3500 LINE PAINTED STUD ASSEMBLIES 3501-**-241659-**	
SIZE A	FSCM NO 72794
DWG. NO. C3501-241659	REV. E
SCALE: NTS	WEIGHT: SHEET 3 OF 5

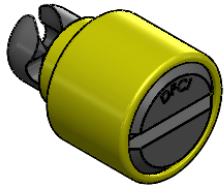


UNCONTROLLED

REVISIONS			
SYS	DESCRIPTION	DATE	APPROV
E	PER ECN 1256	1/29/15	

STUD ASSEMBLY PART NUMBER FINISHED BY ROCKWELL APPROVED VENDOR	STANDARD DFCI PART NUMBER	WEIGHT LBS.	B DIMENSION
3501-38-241659-1EEBX	3506-SC38AD-EEBX	.0088	.080
3501-38-241659-1EEGX	3506-SC38AD-EEGX		
3501-38-241659-1BBG1	3506-SC38AD-BBG1		
3501-38-241659-1ETB	3506-SC38AD-ETB		
3501-38-241659-1EEMBX	3506-SC38AD-EEMBX		
3501-38-241659-1ETR	3506-SC38AD-ETR		
3501-38-241659-1ETG	3506-SC38AD-ETG		
3501-38-241659-1SGMX	3506-SC38AD-SGMX		
3501-38-241659-1GBL	3506-SC38AD-GBL		
3501-38-241659-1FGE	3506-SC38AD-FGE		
3501-38-241659-1BGE1	3506-SC38AD-BGE1	.0088	.080
3501-40-241659-6EEBX	3506-SC40CP2D-EEBX	.0092	.080
3501-40-241659-6EEGX	3506-SC40CP2D-EEGX		
3501-40-241659-2EEBX	3506-SC40AD-EEBX	.0092	.100
3501-40-241659-2EEGX	3506-SC40AD-EEGX		
3501-40-241659-2EEMBX	3506-SC40AD-EEMBX		
3501-40-241659-2SGMX	3506-SC40AD-SGMX		
3501-40-241659-2GBL	3506-SC40AD-GBL		
3501-40-241659-2FGE	3506-SC40AD-FGE		

MATERIAL: SEE NOTE 1	TOLERANCES ON DIMENSIONS UNLESS OTHERWISE SPECIFIED			 DFCI SOLUTIONS INC. 425 UNION BOULEVARD. WEST ISLIP, NEW YORK 11795
HEAT TREAT: STUD=ROCKWELL C30-38	X* = ±2° .XX = ±.015 X/X = ±1/32 .XXX = ±.010 MACHINE FINISH = .125			
FINISH: NOTED-SEE TABLES	PART NO. SEE TABLES	DRN <i>Frank Basile</i>	DATE 04-12-12	TITLE PA-3500 LINE PAINTED STUD ASSEMBLIES 3501-**-241659-**
THE FASTENER PARTS SHOWN IN THIS PRINT ARE PROPRIETARY ARTICLES TO WHICH DFCI SOLUTIONS INC., RETAINS THE EXCLUSIVE RIGHTS OF MANUFACTURE, USE AND SALE. THE PRINT OR DRAWING IS SUBMITTED IN CONFIDENCE AND DOES NOT CONVEY A LICENSE OR PERMISSION TO MANUFACTURE THE FASTENER OR FASTENER PARTS. (C) COPYRIGHT 2009, DFCI SOLUTIONS INC. ALL RIGHTS RESERVED.		CHK. <i>Frank Basile</i>	DATE 04-12-12	
		ENG. <i>Paul Altabrand</i>	DATE 04-12-12	
		MFG. <i>Rashid Ibrahim</i>	DATE 04-12-12	
		G.C. <i>Paul Altabrand</i>	DATE 04-12-12	
	NEXT ASSY	USED ON	SALES. <i>Paul Altabrand</i>	SIZE A FSCM NO. 72794 DWG. NO. C3501-241659 REV. E
	APPLICATION BLOCK			SCALE: NTS WEIGHT: SHEET 4 OF 5



UNCONTROLLED

REVISIONS			
SYS	DESCRIPTION	DATE	APPROV
E	PER ECN 1256	1/29/15	

STUD ASSEMBLY PART NUMBER FINISHED BY ROCKWELL APPROVED VENDOR	STANDARD DFCI PART NUMBER	WEIGHT LBS.	B DIMENSION
3501-42-241659-3EEBX	3506-SC42AD-EEBX	.0094	.120
3501-42-241659-3EEGX	3506-SC42AD-EEGX		
3501-42-241659-3EEMBX	3506-SC42AD-EEMBX		
3501-42-241659-3SGMX	3506-SC42AD-SGMX		
3501-42-241659-3GBL	3506-SC42AD-GBL		
3501-42-241659-3FGE	3506-SC42AD-FGE		
3501-43-241659-5EEBX	3506-SC43CP2D-EEBX	.0096	.080
3501-43-241659-5EEGX	3506-SC43CP2D-EEGX		
3501-44-241659-4EEBX	3506-SC44AD-EEBX	.0098	.140
3501-44-241659-4EEGX	3506-SC44AD-EEGX		
3501-44-241659-4ETB	3506-SC44AD-ETB		
3501-44-241659-4EEMBX	3506-SC44AD-EEMBX		
3501-44-241659-4ETR	3506-SC44AD-ETR		
3501-44-241659-4ETG	3506-SC44AD-ETG		
3501-44-241659-4SGMX	3506-SC44AD-SGMX		
3501-44-241659-4GBK	3506-SC44AD-GBL		
3501-44-241659-4FGE	3506-SC44AD-FGE		
3501-44-241659-7EEBX	3506-SC44CP16D-EEBX		
3501-44-241659-7EEGX	3506-SC44CP16D-EEGX		

MATERIAL:	SEE NOTE 1
HEAT TREAT:	STUD=ROCKWELL C30-38
FINISH:	NOTED-SEE TABLES
<small>THE FASTENER PARTS SHOWN IN THIS PRINT ARE PROPRIETARY ARTICLES TO WHICH DFCI SOLUTIONS INC., RETAINS THE EXCLUSIVE RIGHTS OF MANUFACTURE, USE AND SALE. THE PRINT OR DRAWING IS SUBMITTED IN CONFIDENCE AND DOES NOT CONVEY A LICENSE OR PERMISSION TO MANUFACTURE THE FASTENER OR FASTENER PARTS.</small>	
<small>(C) COPYRIGHT 2009, DFCI SOLUTIONS INC. ALL RIGHTS RESERVED.</small>	

TOLERANCES ON DIMENSIONS UNLESS OTHERWISE SPECIFIED			
X* = ±2*		.XX = ±.015	
X/X = ±1/32		.XXX = ±.010	
MACHINE FINISH = .1257			
PART NO.	SEE TABLES	DRN	DATE
		CHK. <i>Frank Basile</i>	04-12-12
		CHK. <i>Frank Basile</i>	04-12-12
		ENG. <i>Frank Alldorand</i>	04-12-12
		MFG. <i>Rashid Lubman</i>	04-12-12
		Q.C. <i>Frank Alldorand</i>	04-12-12
NEXT ASSY	USED ON	SALES.	DATE



DFCI SOLUTIONS INC.
425 UNION BOULEVARD.
WEST ISLIP, NEW YORK 11795

PA-3500 LINE PAINTED STUD ASSEMBLIES
3501--241659-****

SIZE	FSCM NO.	DWG. NO.	REV.
A	72794	C3501-241659	E

SCALE: NTS WEIGHT: SHEET 5 OF 5