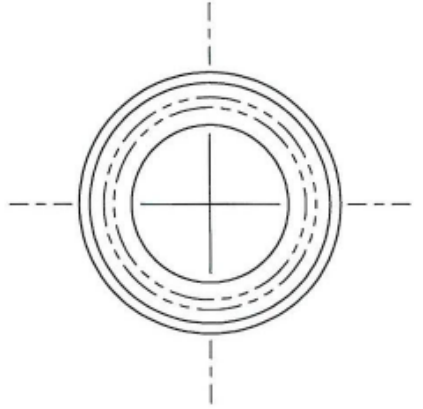
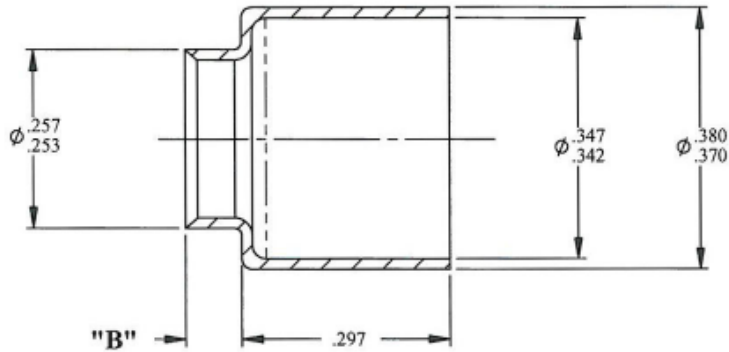


UNCONTROLLED

PART NO.	"B"
3503-Z3CT	.080
3503-1-Z3CT	.090
3503-2-Z3CT	.100
3503-3-Z3CT	.110
3503-4-Z3CT	.120
3503-5-Z3CT	.130
3503-6-Z3CT	.140
3503-7-Z3CT	.070
3503-8-Z3CT	.150
3503-12-Z3CT	.190
3503-15-Z3CT	.220
3503-19-Z3CT	.266

REVISIONS			
SYS	DESCRIPTION	DATE	APPROV
H	PER ECN 1230	07-08-13	FB



- NOTES:
- REMOVE ALL BURRS & BREAK SHARP CORNERS
  - ALL CORNERS & FILLETS .005 MAX
  - HEAT TREAT: VACUUM ANNEAL FOR CUP MADE ON SCREW MACHINE ONLY.
  - FINISH: ZINC PLATE PER ASTM-B-633, TYPE III, SC2 CLEAR TRIVALENT CHROMATE WITH SEALER.
  - FOR PART NUMBER OF CUP MADE FROM TYPE 303 OR 304 STAINLESS STEEL, REMOVE SUFFIX -Z3CT FROM PART NUMBER AND ADD -SS (EXAMPLE 3503-1-SS)
  - FOR THE APPLICATION OF ALTERNATIVE FINISHES, REMOVE SUFFIX -Z3CT FROM THE PART NUMBER AND ADD THE REQUIRED FINISH TO THE PART NUMBER SUFFIX.  
EXAMPLE, FOR YELLOW ZINC TRIVALENT CHROMATE FINISH, THE PART NUMBER WOULD BE 3503-1-Z3YT
  - PLEASE VISIT [www.dfci.com/c3503](http://www.dfci.com/c3503) FOR A LIST OF AVAILABLE FINISHES.

MATERIAL: STEEL: A.I.S.I. 1008, 1010, 1215, OR 8620 STAINLESS STEEL TYPE 303 OR 304	TOLERANCES ON DIMENSIONS UNLESS OTHERWISE SPECIFIED X* = ±2* X/X = ±1/32 XXX = ±.010 MACHINE FINISH = 125J		<b>DFCI SOLUTIONS INC.</b> 425 UNION BOULEVARD. WEST ISLIP, NEW YORK 11795	
HEAT TREAT: ANNEALED	PART NO.	DRN: S. FRANCIS DATE: 10-14-03		
FINISH: SEE NOTE 4		CHK: F. Basil DATE: 7-8-13	TITLE: PA-3500 CUP 3503-xx-Z3CT	
<small>THE FASTENER PARTS SHOWN IN THIS PRINT ARE PROPRIETARY ARTICLES TO WHICH DFCI SOLUTIONS INC., RETAINS THE EXCLUSIVE RIGHTS OF MANUFACTURE, USE AND SALE. THE PRINT OR DRAWING IS SUBMITTED IN CONFIDENCE AND DOES NOT CONVEY A LICENSE OR PERMISSION TO MANUFACTURE THE FASTENER OR FASTENER PARTS.</small> (C) COPYRIGHT 2009, DFCI SOLUTIONS INC. ALL RIGHTS RESERVED.		ENGR: D. Heldebrand DATE: 7-8-13		
			MFG: Andrew Kolben DATE: 7-8-13	SIZE: A FSCM NO: 72794 DWG. NO: C3503 REV. H
	NEXT ASSY	USED ON	SALES: B. Heldebrand DATE: 7-8-13	SCALE: NTS WEIGHT: SHEET 1 OF 1
	APPLICATION BLOCK			

DATE: 10-19-09 FORM: DRAWING