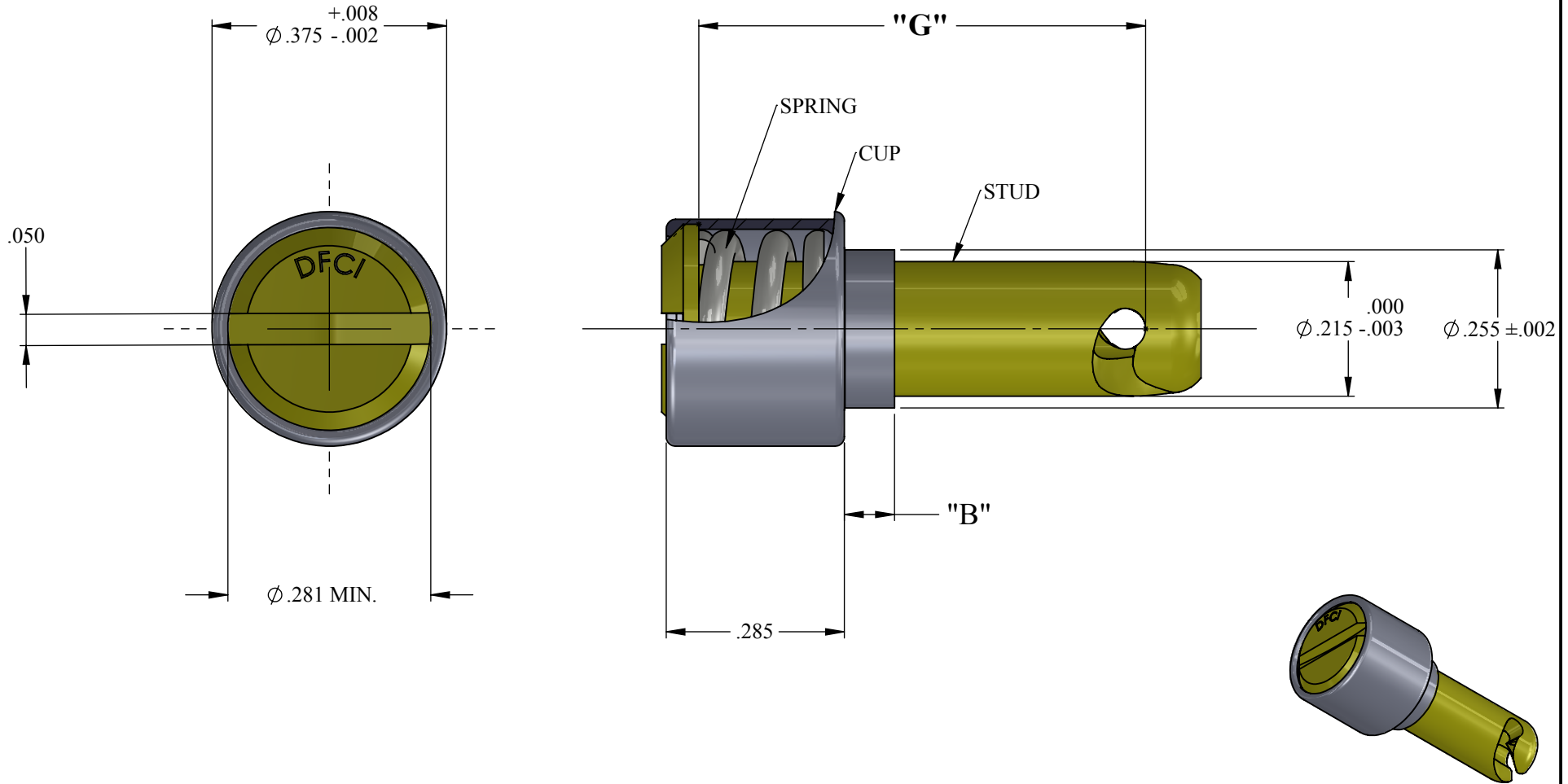


UNCONTROLLED

REVISIONS			
SYS	DESCRIPTION	DATE	APPROV
R	PER ECN. 1258	02-06-15	FB



MATERIAL:	SEE NOTE 1
HEAT TREAT:	STEEL STUD: ROCKWELL C30 - 38
FINISH:	SEE NOTE 2
<small>THE FASTENER PARTS SHOWN IN THIS PRINT ARE PROPRIETARY ARTICLES TO WHICH DFCI SOLUTIONS INC., RETAINS THE EXCLUSIVE RIGHTS OF MANUFACTURE, USE AND SALE. THE PRINT OR DRAWING IS SUBMITTED IN CONFIDENCE AND DOES NOT CONVEY A LICENSE OR PERMISSION TO MANUFACTURE THE FASTENER OR FASTENER PARTS.</small>	
<small>(C) COPYRIGHT 2009, DFCI SOLUTIONS INC. ALL RIGHTS RESERVED.</small>	

TOLERANCES ON DIMENSIONS UNLESS OTHERWISE SPECIFIED			
$X^{\circ} = \pm 2^{\circ}$	$.XX = \pm .015$	MACHINE FINISH = 1257	
$X/X = \pm 1/32$	$.XXX = \pm .010$		
PART NO.	SEE TABLE	DRN	DATE
		Frank Basile	07-16-12
		CHK. Frank Basile	07-16-12
		ENG. [Signature]	07-16-12
		MFG. [Signature]	07-16-12
		Q.C. [Signature]	07-16-12
		SALES.	DATE
NEXT ASSY	USED ON		
APPLICATION BLOCK			

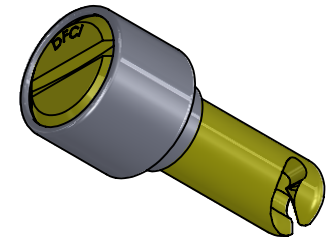
DFCI SOLUTIONS INC.
 425 UNION BOULEVARD.
 WEST ISLIP, NEW YORK 11795

TITLE		PA-3500 STUD ASSEMBLY 3506-SC**CP**-****	
SIZE	FSCM NO.	DWG. NO.	REV.
A	72794	C3506-SCP	R
SCALE: NTS		WEIGHT: SEE TABLE	SHEET 1 OF 4

UNCONTROLLED

REVISIONS			
SYS	DESCRIPTION	DATE	APPROV
R	PER ECN. 1258	02-06-15	FB

PART NUMBER	WEIGHT (LBS.)	PANEL THICKNESS RANGE	"B" DIMENSION	GRIP RANGE	"G" DIMENSION
3506-SC40CP26-SS	.0092	.050-.059	.070	.080-.089	.400
3506-SC44-CP26-Z3B	.0096			.120-.129	.440
3506-SC46CP26-SS	.0097			.140-.149	.460
3506-SC39CP2-BOC	.0091	.060-.069	.080	.070-.079	.390
3506-SC41-CP2-Z3CT	.0093			.090-.099	.410
3506-SC42CP2-Z3CT	.0094			.100-.109	.420
3506-SC42CP2-BOC	.0094			.100-.109	.420
3506-SC43CP2-Z3CT	.0095			.110-.119	.430
3506-SC44CP2-Z3CT	.0096			.120-.129	.440
3506-SC45CP2-Z3CT	.0097			.130-.139	.450
3506-SC46CP2-Z3B	.0098			.140-.149	.460
3506-SC47CP2-Z3CT	.0099			.150-.159	.470
3506-SC48CP2-Z3BT	.0100			.160-.169	.480
3506-SC50CP2-Z3CT	.0102			.180-.189	.500
3506-SC58CP2-EEMBT	.0109			.260-.269	.580
3506-SC63CP2-Z3CT	.0116			.310-.319	.630
3506-SC69CP2-Z3CT	.0121			.370-.379	.690
3506-SC71CP2-Z3CT	.0128			.390-.399	.710
3506-SC83CP2-Z3CT	.0136	.510-.519	.830		
3506-SC41CP20-Z3CT	.0093	.070-.079	.090	.090-.099	.410
3506-SC48CP10-Z3CT	.0100	.080-.089	.100	.160-.169	.480
3506-SC42CP4-Z3CT	.0094	.090-.099	.110	.100-.109	.420
3506-SC46CP4-Z3CT	.0098			.140-.149	.460
3506-SC47CP4-EEB	.0099			.150-.159	.470
3506-SC56CP4-Z3CT	.0108			.240-.249	.560
3506-SC67CP4-Z3CT	.0119			.350-.359	.670
3506-SC44CP16-Z3CT	.0096			.100-.109	.120
3506-SC58CP5-Z3CT	.0110	.110-.119	.130	.260-.269	.580



MATERIAL: SEE NOTE 1

HEAT TREAT: STEEL STUD: ROCKWELL C30 - 38

FINISH: SEE NOTE 2

THE FASTENER PARTS SHOWN IN THIS PRINT ARE PROPRIETARY ARTICLES TO WHICH DFCI SOLUTIONS INC., RETAINS THE EXCLUSIVE RIGHTS OF MANUFACTURE, USE AND SALE. THE PRINT OR DRAWING IS SUBMITTED IN CONFIDENCE AND DOES NOT CONVEY A LICENSE OR PERMISSION TO MANUFACTURE THE FASTENER OR FASTENER PARTS.

(C) COPYRIGHT 2009, DFCI SOLUTIONS INC. ALL RIGHTS RESERVED.

TOLERANCES ON DIMENSIONS UNLESS OTHERWISE SPECIFIED			
X" = ±2"	.XX = ±.015	MACHINE FINISH = .125	
X/X = ±1/32	.XXX = ±.010		
PART NO.	SEE TABLE	DRN	DATE
		Frank Basile	07-16-12
		CHK. Frank Basile	DATE 07-16-12
		ENG. Peter Altkorn	DATE 07-16-12
		MFG. Radu Luban	DATE 07-16-12
		G.C. Peter Altkorn	DATE 07-16-12
		SALES.	DATE
NEXT ASSY	USED ON		
APPLICATION BLOCK			



DFCI SOLUTIONS INC.
425 UNION BOULEVARD.
WEST ISLIP, NEW YORK 11795

PA-3500 STUD ASSEMBLY
3506-SC**CP**_****

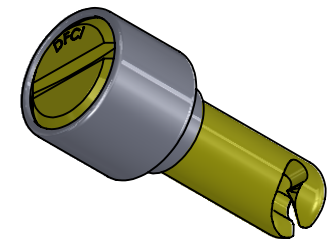
SIZE	FSCM NO.	DWG. NO.	REV.
A	72794	C3506-SCP	R

SCALE: NTS WEIGHT: SEE TABLE SHEET 2 OF 4

UNCONTROLLED

REVISIONS			
SYS	DESCRIPTION	DATE	APPROV
R	PER ECN. 1258	02-06-15	FB

PART NUMBER	WEIGHT (LBS.)	PANEL THICKNESS RANGE	"B" DIMENSION	GRIP RANGE	"G" DIMENSION
3506-SC43CP6-Z3CT	.0095	.120-.129	.140	.110-.119	.430
3506-SC45CP6-Z3CT	.0097			.130-.139	.450
3506-SC47CP6-Z3CT	.0099			.150-.159	.470
3506-SC49CP6-Z3CT	.0101			.170-.179	.490
3506-SC50CP6-Z3CT	.0102			.180-.189	.500
3506-SC53CP6-Z3CT	.0105			.210-.219	.530
3506-SC54CP6-EEG	.0107			.220-.229	.540
3506-SC57CP6-Z3CT	.0109			.250-.259	.570
3506-SC62CP6-Z3CT	.0114			.300-.309	.620
3506-SC65CP6-Z3CT	.0117			.330-.339	.650
3506-SC47CP24-Z3CT	.0099	.140-.149	.160	.150-.159	.470
3506-SC47CP30-Z3CT	.0099	.150-.159	.170	.150-.159	.470
3506-SC50CP14-Z3CT	.0102	.170-.179	.190	.180-.189	.500
3506-SC51CP14-EEBT	.0103			.190-.199	.510
3506-SC51CP14-Z5BT	.0103			.190-.199	.510
3506-SC51CP14-Z3BT	.0103			.190-.199	.510
3506-SC52CP18-Z3CT	.0104	.200-.209	.220	.200-.209	.520
3506-SC53CP18-Z3CT	.0105			.210-.219	.530
3506-SC48CP22-Z3CT	.0100	.246-.255	.266	.160-.169	.480
3506-SC56CP22-Z3CT	.0108			.240-.249	.560
3506-SC57CP22-Z3CT	.0109			.250-.259	.570
3506-SC59CP22-Z3CT	.0111			.270-.279	.590



MATERIAL: SEE NOTE 1

HEAT TREAT: STEEL STUD: ROCKWELL C30 - 38

FINISH: SEE NOTE 2

THE FASTENER PARTS SHOWN IN THIS PRINT ARE PROPRIETARY ARTICLES TO WHICH DFCI SOLUTIONS INC., RETAINS THE EXCLUSIVE RIGHTS OF MANUFACTURE, USE AND SALE. THE PRINT OR DRAWING IS SUBMITTED IN CONFIDENCE AND DOES NOT CONVEY A LICENSE OR PERMISSION TO MANUFACTURE THE FASTENER OR FASTENER PARTS.

(C) COPYRIGHT 2009, DFCI SOLUTIONS INC. ALL RIGHTS RESERVED.

TOLERANCES ON DIMENSIONS UNLESS OTHERWISE SPECIFIED

X* = ±2° .XX = ±.015
X/X = ±1/32 .XXX = ±.010 MACHINE FINISH = .125

PART NO.	SEE TABLE	DRN	Frank Basile	DATE	07-16-12
		CHK.	Frank Basile	DATE	07-16-12
		ENG.	Bob Altkorn	DATE	07-16-12
		MFG.	Rashad Ibrahim	DATE	07-16-12
		G.C.	Bob Altkorn	DATE	07-16-12
NEXT ASSY	USED ON	SALES		DATE	



DFCI SOLUTIONS INC.
425 UNION BOULEVARD.
WEST ISLIP, NEW YORK 11795

TITLE		PA-3500 STUD ASSEMBLY 3506-SC**CP**_****	
SIZE	FSCM NO.	DWG. NO.	REV.
A	72794	C3506-SCP	R
SCALE: NTS		WEIGHT: SEE TABLE	SHEET 3 OF 4

UNCONTROLLED

REVISIONS			
SYS	DESCRIPTION	DATE	APPROV
R	PER ECN. 1258	02-06-15	FB

NOTES:

1. MATERIAL:

CUP: A.I.S.I. 1008, 1010, OR 1012 STEEL
 STUD: A.I.S.I. 4037, 1118, OR 8620 STEEL
 SPRING: MUSIC WIRE PER ASTM-A-228

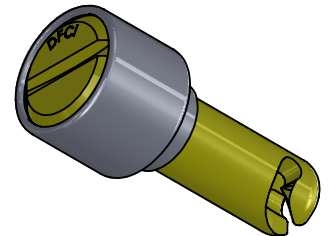
FOR 300 SERIES STAINLESS STEEL ADD SS TO PART NUMBER
 EXAMPLE: 3506-SC40CP2-SS


2. FINISH:

SEE PART NUMBER SUFFIX IN TABLE

3. FOR THE APPLICATION OF ALTERNATIVE FINISHES, REMOVE THE SUFFIX -Z3CT FROM THE PART NUMBER AND ADD THE REQUIRED FINISH SUFFIX TO THE PART NUMBER. EXAMPLE: FOR YELLOW ZINC TRIVALENT CHROMATE FINISH, THE PART NUMBER WOULD BE 3506-44CP26-Z3YT

4. PLEASE VISIT WWW.DFCIS/C3506-SCP FOR A LIST OF AVAILABLE FINISHES, AND FINISH SUFFIX DETAIL.



MATERIAL: SEE NOTE 1		TOLERANCES ON DIMENSIONS UNLESS OTHERWISE SPECIFIED X* = ±2° .XX = ±.015 X/X = ±1/32 .XXX = ±.010 MACHINE FINISH = .1257				 DFCI SOLUTIONS INC. 425 UNION BOULEVARD. WEST ISLIP, NEW YORK 11795	
HEAT TREAT: STEEL STUD: ROCKWELL C30 - 38		PART NO. SEE TABLE	DRN. <i>Frank Basile</i>	DATE 07-16-12	TITLE PA-3500 STUD ASSEMBLY 3506-SC**CP**_**** DWG. NO. C3506-SCP SCALE: NTS WEIGHT: SEE TABLE SHEET 4 OF 4		
FINISH: SEE NOTE 2			CHK. <i>Frank Basile</i>	DATE 07-16-12			
THE FASTENER PARTS SHOWN IN THIS PRINT ARE PROPRIETARY ARTICLES TO WHICH DFCI SOLUTIONS INC., RETAINS THE EXCLUSIVE RIGHTS OF MANUFACTURE, USE AND SALE. THE PRINT OR DRAWING IS SUBMITTED IN CONFIDENCE AND DOES NOT CONVEY A LICENSE OR PERMISSION TO MANUFACTURE THE FASTENER OR FASTENER PARTS. (C) COPYRIGHT 2009, DFCI SOLUTIONS INC. ALL RIGHTS RESERVED.			ENG. <i>Robert Alldorant</i>	DATE 07-16-12			
			MFG. <i>Rashid Zubair</i>	DATE 07-16-12			
	NEXT ASSY	USED ON	Q.C. <i>Robert Alldorant</i>	DATE 07-16-12	SIZE A	FSCM NO. 72794	REV. R