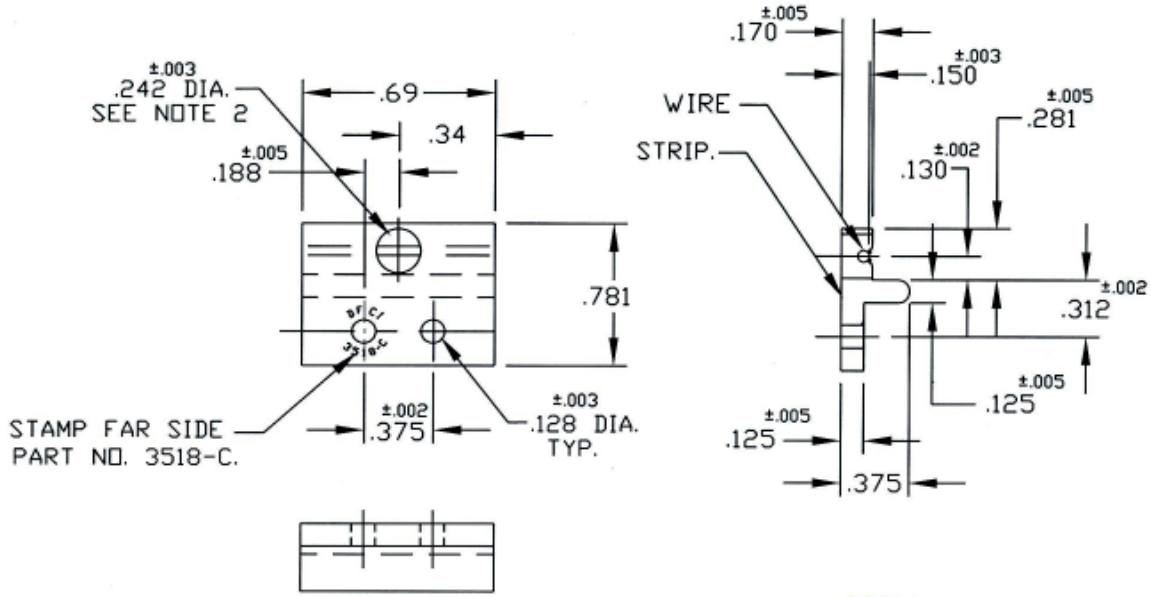


UNCONTROLLED

C3518-C REV. *c*

REVISIONS			
SYM	DESCRIPTION	DATE	APPROV
C	ADD WEIGHT PER ECN 1162	8-28-09	<i>AB</i>



- NOTES:
- MATLS: STRIP: 6061-T6 ALUM. ALLOY PER QQ-A-200/8. WIRE: .050 DIA. ST. STEEL TYPE 316, PER ASTM-A-313, SPRING TEMPER.
 - SOME DISTORTION MAY ENTER THE .242 DIA. HOLE, DUE TO STAKING OF WIRE. THIS WILL NOT AFFECT THE FUNCTION OF THE PRODUCT.
 - FOR RECEPTACLE LENGTHS LONGER THAN .69", WITH MULTIPLE HOLES. REFER TO DRAWING NO. C3595-H.

PART NO.	WEIGHT (LBS.)
3518-C	.0086

MAT'L PER NOTE 1.	TOLERANCES ON DIMENSIONS UNLESS OTHERWISE SPECIFIED * = ±2" .XX = ± .015 X/X = ±1/32 .XXX = ± .010 MACHINE FINISH .125		DFCI SOLUTIONS INC. 425 UNION BOULEVARD WEST ISLIP, NEW YORK 11795	
HEAT TREAT NONE.	PART NO.	DRN S. FRENCH DATE 2-20-04	PA-3500 LINE RECEPTACLE, 3518-C.	
FINISH CLEAN & FREE OF BURRS.		CHK F. Basily DATE 9-14-09	SIZE A	FSCM NO 72794
<small>THE FASTENER PARTS SHOWN IN THIS PRINT ARE PROPRIETARY ARTICLES TO WHICH DFCI SOLUTIONS INC. RETAINS THE EXCLUSIVE RIGHTS OF MANUFACTURE, USE AND SALE. THE PRINT OR DRAWING IS SUBMITTED IN CONFIDENCE AND DOES NOT CONVEY A LICENSE OR PERMISSION TO MANUFACTURE THE FASTENER OR FASTENER PARTS.</small> <small>© COPYRIGHT 2003, DFCI SOLUTIONS INC. ALL RIGHTS RESERVED.</small> DATE: 07/01/06 FORM: DRAWING	NEXT ASSY	USED ON	DWG. NO. C3518-C	REV. C
	APPLICATION BLOCK	SALES	SCALE NTS	WT.
				SHEET 1 OF 1