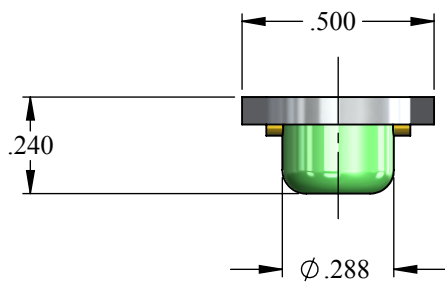
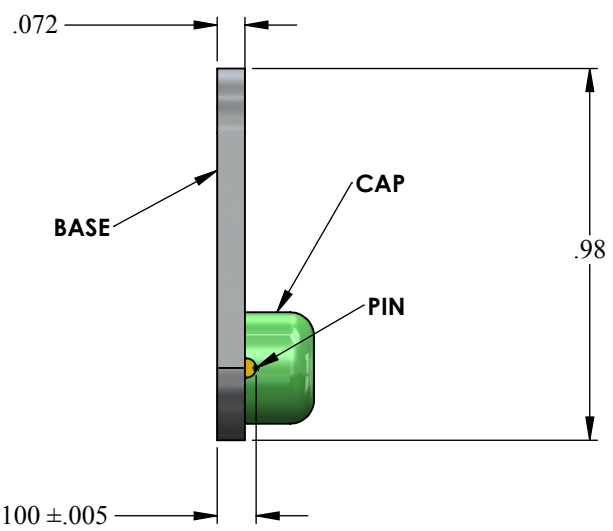
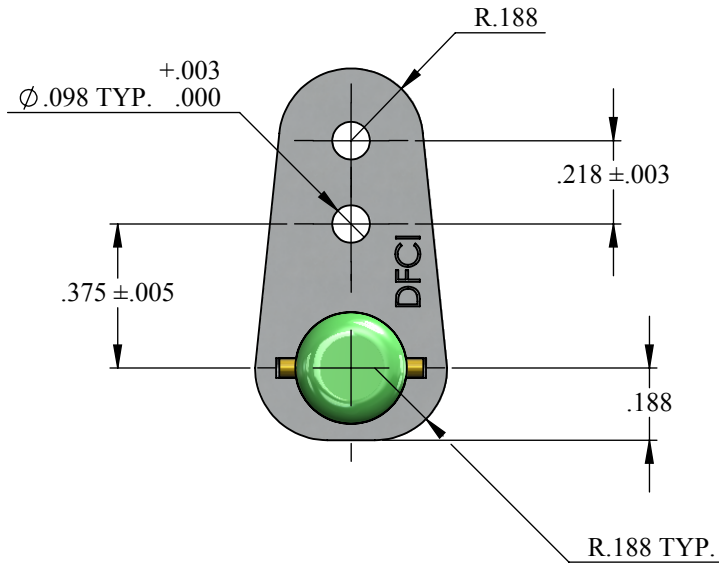


UNCONTROLLED

REVISIONS			
SYS	DESCRIPTION	DATE	APPROV
E	PER ECN 1246	06/17/14	



ASSEMBLY PART NUMBER	FINISH	
	CAP AND BASE	PIN
3518-F	NATURAL	NATURAL
3518-F-AS1C	ANODIZING, SULFURIC ACID BATH PER MIL-A-8625, TYPE II, CLASS 1	NATURAL

MATERIAL: BASE & CAP 6061-T6 ALUMINUM
PIN .050 Ø TYPE 316 STAINLESS
STEEL, COND B, SPRING TEMPER

HEAT TREAT: PIN-COND. B SPRING TEMPER

FINISH: SEE TABLE


THE FASTENER PARTS SHOWN IN THIS PRINT ARE PROPRIETARY ARTICLES TO WHICH DFCI SOLUTIONS INC., RETAINS THE EXCLUSIVE RIGHTS OF MANUFACTURE, USE AND SALE. THE PRINT OR DRAWING IS SUBMITTED IN CONFIDENCE AND DOES NOT CONVEY A LICENSE OR PERMISSION TO MANUFACTURE THE FASTENER OR FASTENER PARTS.

(C) COPYRIGHT 2009, DFCI SOLUTIONS INC. ALL RIGHTS RESERVED.

TOLERANCES ON DIMENSIONS UNLESS OTHERWISE SPECIFIED

X* = ±2° .XX = ±.015
X/X = ±1/32 .XXX = ±.010 MACHINE FINISH = 125/7

PART NO.	3518-F	DRN	Frank Basile	DATE	07-12-11
		CHK.	Frank Basile	DATE	07-12-11
		ENG.	Frank Altkorn	DATE	07-12-11
		MFG.	Rashad Ibrahim	DATE	07-12-11
		G.C.	Frank Altkorn	DATE	07-12-11
		SALES.		DATE	
NEXT ASSY	USED ON				
APPLICATION BLOCK					



DFCI SOLUTIONS INC.
425 UNION BOULEVARD.
WEST ISLIP, NEW YORK 11795

TITLE: PA-3500 RECEPTACLE ASSEMBLY
3518-F

SIZE	FSCM NO.	DWG. NO.	REV.
A	72794	C3518-F	E

SCALE: NTS WEIGHT: .0029 LBS. SHEET 1 OF 1