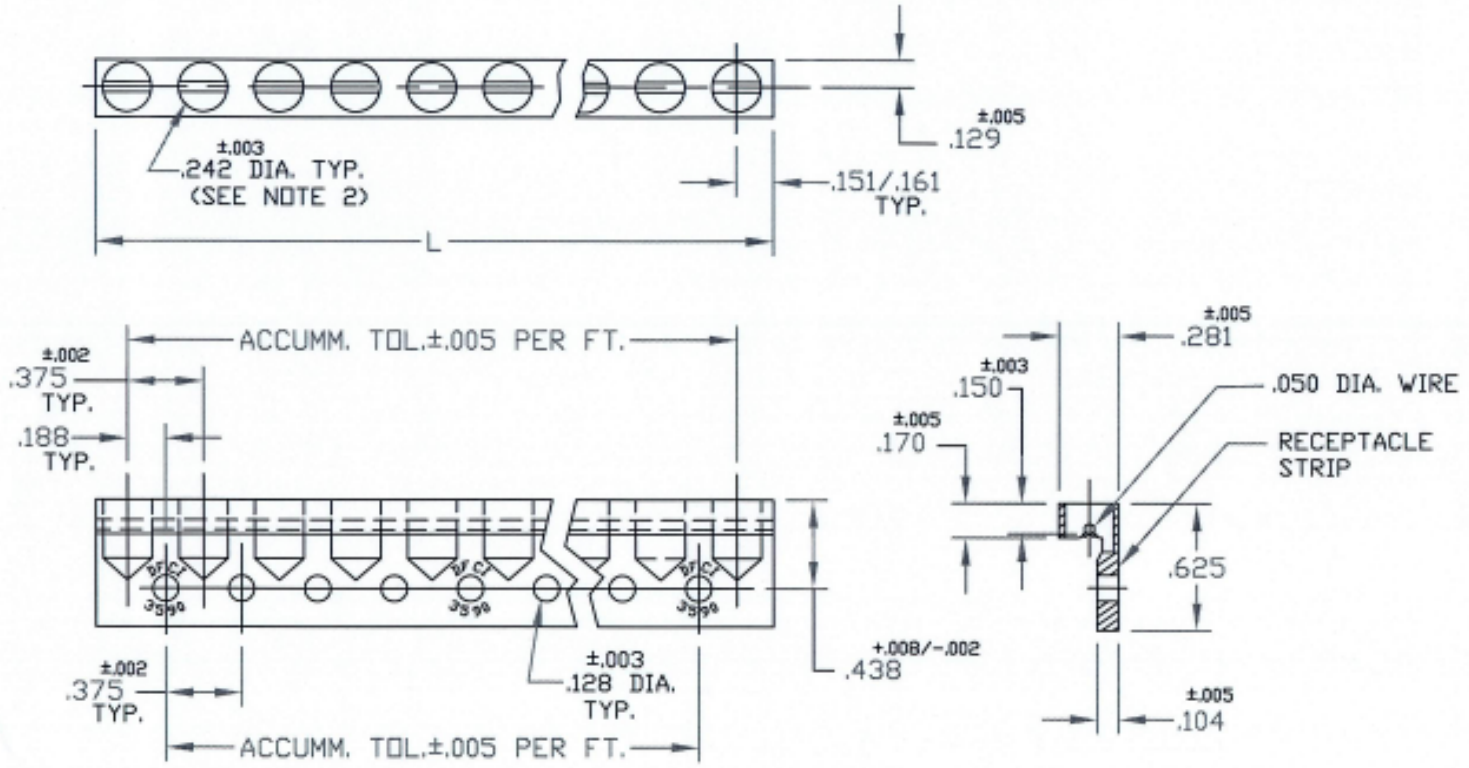



UNCONTROLLED

C3590-241843 SHT. 1 of 2 REV. *A*

REVISIONS			
SYM	DESCRIPTION	DATE	APPROV
A	INITIAL RELEASE PER ECN 845	7-23-07	<i>R. OLSON</i>



FOR PART NO. REFER TO SHEET 2 of 2.

MAT'L <b>PER NOTE 1.</b>	TOLERANCES ON DIMENSIONS UNLESS OTHERWISE SPECIFIED X* = ±2* .XX = ±.015 X/X = ±1/32 .XXX = ±.010 MACHINE FINISH 125T		 <b>DFCI SOLUTIONS INC.</b> 425 UNION BOULEVARD WEST ISLIP, NEW YORK 11795	
HEAT TREAT <b>NONE.</b>	PART NO.	DRN <i>S. Francis</i> DATE 7-23-07	<b>PA-3500 LINE RECEPTACLE,</b> <b>3590-Hxx-241843-AC3.</b>	
FINISH <b>AS NOTED.</b>		CHK <i>F. Basile</i> DATE 7-24-07	SIZE <b>A</b>	REV. <b>A</b>
<small>THE FACTOR PARTS SHOWN IN THIS PRINT ARE PROPRIETARY ARTICLES TO WHICH DFCI SOLUTIONS INC. RETAINS THE EXCLUSIVE RIGHTS OF MANUFACTURE, USE AND SALE. THE PRINT OR DRAWING IS SUBMITTED IN CONFIDENCE AND DOES NOT CONVEY A LICENSE OR PERMISSION TO MANUFACTURE THE FACTOR OR FACTOR PARTS.          © COPYRIGHT 2003, DFCI SOLUTIONS INC. ALL RIGHTS RESERVED.</small>		ENG <i>R. OLSON</i> DATE 7-24-07	FSCM NO. <b>72794</b>	DWG. NO. <b>C3590-241843</b>
	NEXT ASSY	USED ON	SCALE <b>NTS</b>	WT.
		SALES	SHEET <b>1 OF 2</b>	

DATE: 07/01/06 FORM: DRAWING

The parts shown in this print are proprietary articles to which DFCI Solutions, Inc. retains the exclusive rights of manufacture, use and sale. The print or drawing is submitted in confidence and does not convey a license or permission to manufacture the parts. Copyright © 2007 by DFCI Solutions, Inc. All rights reserved.


UNCONTROLLED

REVISIONS			
SYM	DESCRIPTION	DATE	APPROV
A	INITIAL RELEASE PER 845	7-23-07	

PART NO.	L	FINISH.
3590-H9-241843-AC3	3.312	CHROMATE ALUM. COATING, PER MIL-C-5541, CLASS 3 & MIL-C-81706, CLASS 3.
3590-H10-241843-AC3	3.687	
3590-H21-241843-AC3	7.812	
3590-H33-241843-AC3	12.312	
3590-H39-241843-AC3	14.562	

NOTES:

- MATERIALS:  
STRIP: 6061-T6 ALUM. ALLOY PER QQ-A-200/8.  
WIRE: .050 DIA. ST. STEEL TYPE 316, PER ASTM-A-313, SPRING TEMPER.
- SOME DISTORTION MAY ENTER THE .242 DIA. HOLE, DUE TO STAKING OF WIRE. THIS WILL NOT AFFECT THE FUNCTION OF THE PRODUCT.
- PLEASE VISIT WWW.DFCIS.COM/C3590-241843 FOR A LIST OF AVAILABLE FINISHES.

MATL PER NOTE 1.	TOLERANCES ON DIMENSIONS UNLESS OTHERWISE SPECIFIED X' = ±2' .XX = ±.015 X/X = ±1/32 .XXX = ±.010 MACHINE FINISH 125T		 <b>DFCI SOLUTIONS INC.</b> 425 UNION BOULEVARD WEST ISLIP, NEW YORK 11795	
HEAT TREAT NONE.	PART NO.	DRN S. FRANKS DATE 7-23-07	PA-3500 LINE RECEPTACLE, 3590-Hxx-241843-AC3.	
FINISH AS NOTED.		CHK F. BARKER DATE 7/24/07	SIZE A	FSCM NO 72794
		ENG R. CLAYTON DATE 7/24/07	DWG. NO. C3590-241843	REV. A
		MFG B. KLAZOWER DATE 7/24/07	SHEET 2 OF 2	
	NEXT ASSY	USED ON	SCALE NTS	WT.
		SALES B. KLAZOWER DATE 7/24/07		

DATE: 07/01/06 FORM: DRAWING