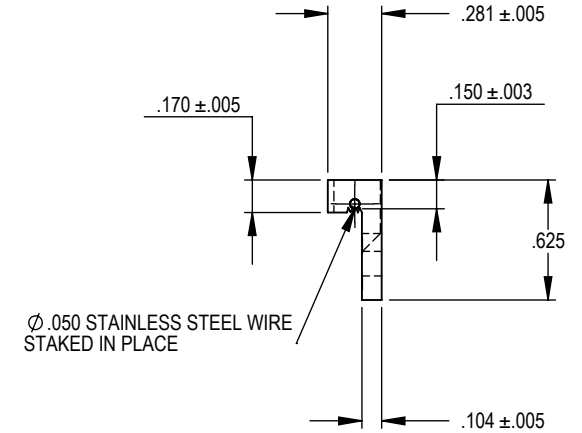
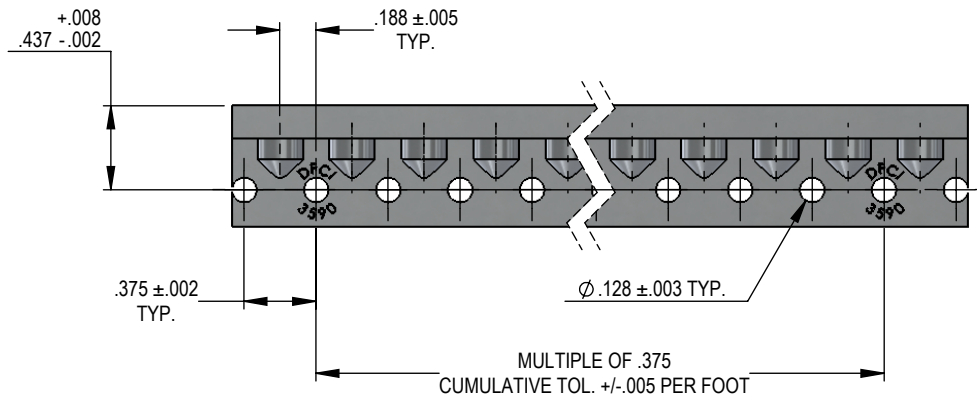
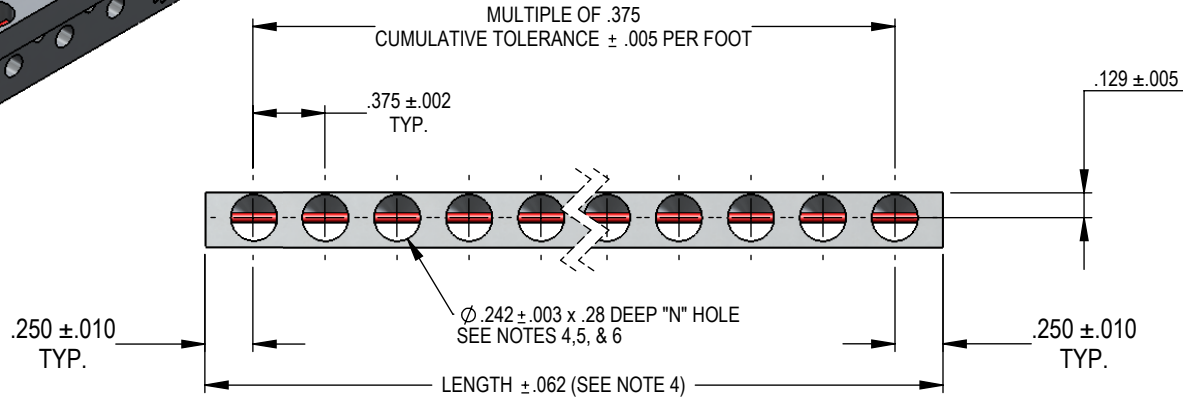
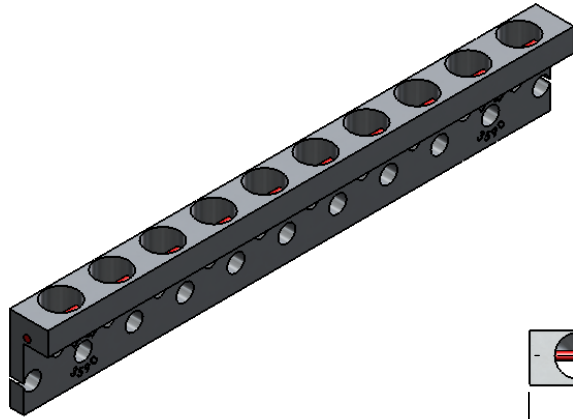


REVISIONS			
SYS	DESCRIPTION	DATE	APPROV
A	PER ECN 1238	04/08/14	



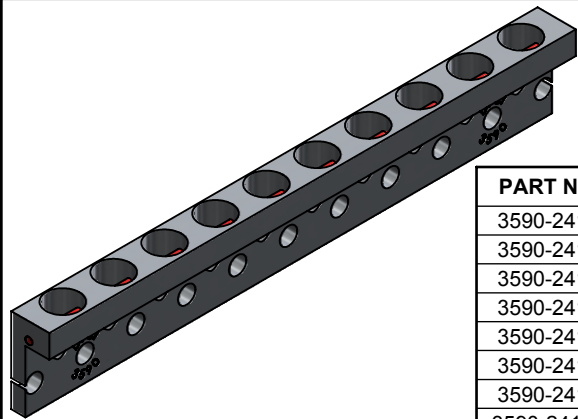
UNCONTROLLED

MATERIAL:	SEE NOTE 3
HEAT TREAT:	TEMPER TO COND. T6.
FINISH:	NONE, OR ON SPECIAL ORDER PER NOTE 7
<small>THE FASTENER PARTS SHOWN IN THIS PRINT ARE PROPRIETARY ARTICLES TO WHICH DFCI SOLUTIONS INC., RETAINS THE EXCLUSIVE RIGHTS OF MANUFACTURE, USE AND SALE. THE PRINT OR DRAWING IS SUBMITTED IN CONFIDENCE AND DOES NOT CONVEY A LICENSE OR PERMISSION TO MANUFACTURE THE FASTENER OR FASTENER PARTS.</small>	
<small>(C) COPYRIGHT 2009, DFCI SOLUTIONS INC. ALL RIGHTS RESERVED.</small>	

TOLERANCES ON DIMENSIONS UNLESS OTHERWISE SPECIFIED			
$X^{\circ} = \pm 2^{\circ}$		$.XX = \pm 0.015$	
$X/X = \pm 1/32$		$.XXX = \pm 0.010$	
MACHINE FINISH = $.125\sqrt{\text{ }}$			
PART NO.	SEE SHEETS 2 & 3	DRN	DATE
		Frank Basile	03/19/14
		Frank Basile	03/19/14
		Eng. [Signature]	03/19/14
		MFG. Rashm Lubman	03/19/14
		Q.C. [Signature]	03/19/14
NEXT ASSY	USED ON	SALES.	DATE

DFCI SOLUTIONS INC.
 425 UNION BOULEVARD.
 WEST ISLIP, NEW YORK 11795

TITLE			
PA-3500 RECEPTACLE STRIP WITH SPECIAL END CUTS			
3590-241901-Hxxx			
SIZE	FSCM NO.	DWG. NO.	REV.
A	72794	C3590-241901-H	A
SCALE: NTS		WEIGHT:	SHEET 1 OF 3



UNCONTROLLED

REVISIONS			
SYS	DESCRIPTION	DATE	APPROV
A	PER ECN 1238	04/08/14	

PART NUMBER	# OF HOLES	PART NUMBER	# OF HOLES	PART NUMBER	# OF HOLES	PART NUMBER	# OF HOLES	PART NUMBER	# OF HOLES
3590-241901-H3	3	3590-241901-H36	36	3590-241901-H69	69	3590-241901-H102	102	3590-241901-H135	135
3590-241901-H4	4	3590-241901-H37	37	3590-241901-H70	70	3590-241901-H103	103	3590-241901-H136	136
3590-241901-H5	5	3590-241901-H38	38	3590-241901-H71	71	3590-241901-H104	104	3590-241901-H137	137
3590-241901-H6	6	3590-241901-H39	39	3590-241901-H72	72	3590-241901-H105	105	3590-241901-H138	138
3590-241901-H7	7	3590-241901-H40	40	3590-241901-H73	73	3590-241901-H106	106	3590-241901-H139	139
3590-241901-H8	8	3590-241901-H41	41	3590-241901-H74	74	3590-241901-H107	107	3590-241901-H140	140
3590-241901-H9	9	3590-241901-H42	42	3590-241901-H75	75	3590-241901-H108	108	3590-241901-H141	141
3590-241901-H10	10	3590-241901-H43	43	3590-241901-H76	76	3590-241901-H109	109	3590-241901-H142	142
3590-241901-H11	11	3590-241901-H44	44	3590-241901-H77	77	3590-241901-H110	110	3590-241901-H143	143
3590-241901-H12	12	3590-241901-H45	45	3590-241901-H78	78	3590-241901-H111	111	3590-241901-H144	144
3590-241901-H13	13	3590-241901-H46	46	3590-241901-H79	79	3590-241901-H112	112	3590-241901-H145	145
3590-241901-H14	14	3590-241901-H47	47	3590-241901-H80	80	3590-241901-H113	113	3590-241901-H146	146
3590-241901-H15	15	3590-241901-H48	48	3590-241901-H81	81	3590-241901-H114	114	3590-241901-H147	147
3590-241901-H16	16	3590-241901-H49	49	3590-241901-H82	82	3590-241901-H115	115	3590-241901-H148	148
3590-241901-H17	17	3590-241901-H50	50	3590-241901-H83	83	3590-241901-H116	116	3590-241901-H149	149
3590-241901-H18	18	3590-241901-H51	51	3590-241901-H84	84	3590-241901-H117	117	3590-241901-H150	150
3590-241901-H19	19	3590-241901-H52	52	3590-241901-H85	85	3590-241901-H118	118	3590-241901-H151	151
3590-241901-H20	20	3590-241901-H53	53	3590-241901-H86	86	3590-241901-H119	119	3590-241901-H152	152
3590-241901-H21	21	3590-241901-H54	54	3590-241901-H87	87	3590-241901-H120	120	3590-241901-H153	153
3590-241901-H22	22	3590-241901-H55	55	3590-241901-H88	88	3590-241901-H121	121	3590-241901-H154	154
3590-241901-H23	23	3590-241901-H56	56	3590-241901-H89	89	3590-241901-H122	122	3590-241901-H155	155
3590-241901-H24	24	3590-241901-H57	57	3590-241901-H90	90	3590-241901-H123	123	3590-241901-H156	156
3590-241901-H25	25	3590-241901-H58	58	3590-241901-H91	91	3590-241901-H124	124	3590-241901-H157	157
3590-241901-H26	26	3590-241901-H59	59	3590-241901-H92	92	3590-241901-H125	125	3590-241901-H158	158
3590-241901-H27	27	3590-241901-H60	60	3590-241901-H93	93	3590-241901-H126	126	3590-241901-H159	159
3590-241901-H28	28	3590-241901-H61	61	3590-241901-H94	94	3590-241901-H127	127	3590-241901-H160	160
3590-241901-H29	29	3590-241901-H62	62	3590-241901-H95	95	3590-241901-H128	128	3590-241901-H161	161
3590-241901-H30	30	3590-241901-H63	63	3590-241901-H96	96	3590-241901-H129	129	3590-241901-H162	162
3590-241901-H31	31	3590-241901-H64	64	3590-241901-H97	97	3590-241901-H130	130	3590-241901-H163	163
3590-241901-H32	32	3590-241901-H65	65	3590-241901-H98	98	3590-241901-H131	131	3590-241901-H164	164
3590-241901-H33	33	3590-241901-H66	66	3590-241901-H99	99	3590-241901-H132	132	3590-241901-H165	165
3590-241901-H34	34	3590-241901-H67	67	3590-241901-H100	100	3590-241901-H133	133	3590-241901-H166	166
3590-241901-H35	35	3590-241901-H68	68	3590-241901-H101	101	3590-241901-H134	134	3590-241901-H167	167

MATERIAL: SEE NOTE 3

HEAT TREAT: TEMPER TO COND. T6.

FINISH: NONE, OR ON SPECIAL ORDER PER NOTE 7

THE FASTENER PARTS SHOWN IN THIS PRINT ARE PROPRIETARY ARTICLES TO WHICH DFCI SOLUTIONS INC., RETAINS THE EXCLUSIVE RIGHTS OF MANUFACTURE, USE AND SALE. THE PRINT OR DRAWING IS SUBMITTED IN CONFIDENCE AND DOES NOT CONVEY A LICENSE OR PERMISSION TO MANUFACTURE THE FASTENER OR FASTENER PARTS.

(C) COPYRIGHT 2009, DFCI SOLUTIONS INC. ALL RIGHTS RESERVED.

TOLERANCES ON DIMENSIONS UNLESS OTHERWISE SPECIFIED

X* = ±2* .XX = ±.015
X/X = ±1/32 .XXX = ±.010

MACHINE FINISH = .125

PART NO. SEE SHEETS 2 & 3

DRN Frank Basile DATE 03/19/14

CHK. Frank Basile DATE 03/19/14

ENG. Peter Altkrampf DATE 03/19/14

MFG. Radu Lebanu DATE 03/19/14

G.C. Peter Altkrampf DATE 03/19/14

SALES. DATE

APPLICATION BLOCK

DFCI SOLUTIONS INC.
425 UNION BOULEVARD.
WEST ISLIP, NEW YORK 11795

DFCI

TITLE PA-3500 RECEPTACLE STRIP WITH SPECIAL END CUTS
3590-241901-H***

SIZE A FSCM NO. 72794 DWG. NO. C3590-241901-H REV. A

SCALE: NTS WEIGHT: SHEET 2 OF 3

UNCONTROLLED

REVISIONS			
SYS	DESCRIPTION	DATE	APPROV
A	PER ECN 1238	04/08/14	

PART NUMBER	# OF HOLES	PART NUMBER	# OF HOLES	PART NUMBER	# OF HOLES	PART NUMBER	# OF HOLES	PART NUMBER	# OF HOLES
3590-241901-H168	168	3590-241901-H201	201	3590-241901-H234	234	3590-241901-H267	267	3590-241901-H300	300
3590-241901-H169	169	3590-241901-H202	202	3590-241901-H235	235	3590-241901-H268	268	3590-241901-H301	301
3590-241901-H170	170	3590-241901-H203	203	3590-241901-H236	236	3590-241901-H269	269	3590-241901-H302	302
3590-241901-H171	171	3590-241901-H204	204	3590-241901-H237	237	3590-241901-H270	270	3590-241901-H303	303
3590-241901-H172	172	3590-241901-H205	205	3590-241901-H238	238	3590-241901-H271	271	3590-241901-H304	304
3590-241901-H173	173	3590-241901-H206	206	3590-241901-H239	239	3590-241901-H272	272	3590-241901-H305	305
3590-241901-H174	174	3590-241901-H207	207	3590-241901-H240	240	3590-241901-H273	273	3590-241901-H306	306
3590-241901-H175	175	3590-241901-H208	208	3590-241901-H241	241	3590-241901-H274	274	3590-241901-H307	307
3590-241901-H176	176	3590-241901-H209	209	3590-241901-H242	242	3590-241901-H275	275	3590-241901-H308	308
3590-241901-H177	177	3590-241901-H210	210	3590-241901-H243	243	3590-241901-H276	276	3590-241901-H309	309
3590-241901-H178	178	3590-241901-H211	211	3590-241901-H244	244	3590-241901-H277	277	3590-241901-H310	310
3590-241901-H179	179	3590-241901-H212	212	3590-241901-H245	245	3590-241901-H278	278	3590-241901-H311	311
3590-241901-H180	180	3590-241901-H213	213	3590-241901-H246	246	3590-241901-H279	279	3590-241901-H312	312
3590-241901-H181	181	3590-241901-H214	214	3590-241901-H247	247	3590-241901-H280	280	3590-241901-H313	313
3590-241901-H182	182	3590-241901-H215	215	3590-241901-H248	248	3590-241901-H281	281	3590-241901-H314	314
3590-241901-H183	183	3590-241901-H216	216	3590-241901-H249	249	3590-241901-H282	282	3590-241901-H315	315
3590-241901-H184	184	3590-241901-H217	217	3590-241901-H250	250	3590-241901-H283	283	3590-241901-H316	316
3590-241901-H185	185	3590-241901-H218	218	3590-241901-H251	251	3590-241901-H284	284	3590-241901-H317	317
3590-241901-H186	186	3590-241901-H219	219	3590-241901-H252	252	3590-241901-H285	285	3590-241901-H318	318
3590-241901-H187	187	3590-241901-H220	220	3590-241901-H253	253	3590-241901-H286	286	3590-241901-H319	319
3590-241901-H188	188	3590-241901-H221	221	3590-241901-H254	254	3590-241901-H287	287	3590-241901-H320	320
3590-241901-H189	189	3590-241901-H222	222	3590-241901-H255	255	3590-241901-H288	288		
3590-241901-H190	190	3590-241901-H223	223	3590-241901-H256	256	3590-241901-H289	289		
3590-241901-H191	191	3590-241901-H224	224	3590-241901-H257	257	3590-241901-H290	290		
3590-241901-H192	192	3590-241901-H225	225	3590-241901-H258	258	3590-241901-H291	291		
3590-241901-H193	193	3590-241901-H226	226	3590-241901-H259	259	3590-241901-H292	292		
3590-241901-H194	194	3590-241901-H227	227	3590-241901-H260	260	3590-241901-H293	293		
3590-241901-H195	195	3590-241901-H228	228	3590-241901-H261	261	3590-241901-H294	294		
3590-241901-H196	196	3590-241901-H229	229	3590-241901-H262	262	3590-241901-H295	295		
3590-241901-H197	197	3590-241901-H230	230	3590-241901-H263	263	3590-241901-H296	296		
3590-241901-H198	198	3590-241901-H231	231	3590-241901-H264	264	3590-241901-H297	297		
3590-241901-H199	199	3590-241901-H232	232	3590-241901-H265	265	3590-241901-H298	298		
3590-241901-H200	200	3590-241901-H233	233	3590-241901-H266	266	3590-241901-H299	299		

NOTES:

- REMOVE ALL BURRS & BREAK SHARP CORNERS
- ALL CORNERS & FILLETS .005 MAX
- MATERIALS:
 - A. WIRE: .050 DIA STAINLESS STEEL, TYPE 316. PER ASTM-A-313, SPRING TEMPER
 - B. STRIP: ALUMINUM ALLOY, 6061-T6 ALUMINUM ALLOY PER SAE AMS QQ-A-200-8
- A. THE CUT LENGTH OF THE PART IS CALCULATED AS FOLLOWS: TOTAL LENGTH=(N-1)(.375)+.500
EXAMPLE: 3590-241901-H50 (50-1)(.375)+.500=18.875 in.
 - B. NUMBER OF "N" HOLES PER PART ARE CALLED OUT IN THE PART NUMBER.

EXAMPLE:
3590-241901-H3 = H3 INDICATES 3 HOLES IN THE RECEPTACLE
3590-241901-H50 = H50 INDICATES 50 HOLES IN THE RECEPTACLE
- SOME DISTORTION MAY ENTER THE .242 DIA. HOLE DUE TO STAKING OF THE WIRE. THIS WILL NOT AFFECT THE FUNCTION OF THE PRODUCT.
- PARTS TO BE ORDERED ACCORDING TO THE NUMBER OF HOLES REQUIRED: EXAMPLE: PART NO. 3590-241901-H34 WILL PROVIDE 34 RECEPTACLE HOLES.
- PLEASE VISIT WWW.DFCIS.COM/C3590-241901 FOR A LIST OF AVAILABLE FINISHES.

MATERIAL:	SEE NOTE 3
HEAT TREAT:	TEMPER TO COND. T6.
FINISH:	NONE, OR ON SPECIAL ORDER PER NOTE 7
<small>THE FASTENER PARTS SHOWN IN THIS PRINT ARE PROPRIETARY ARTICLES TO WHICH DFCI SOLUTIONS INC., RETAINS THE EXCLUSIVE RIGHTS OF MANUFACTURE, USE AND SALE. THE PRINT OR DRAWING IS SUBMITTED IN CONFIDENCE AND DOES NOT CONVEY A LICENSE OR PERMISSION TO MANUFACTURE THE FASTENER OR FASTENER PARTS.</small>	
(C) COPYRIGHT 2009, DFCI SOLUTIONS INC. ALL RIGHTS RESERVED.	

TOLERANCES ON DIMENSIONS UNLESS OTHERWISE SPECIFIED			
X* = ±2°	.XX = ±.015	MACHINE FINISH = .125	
X/X = ±1/32	.XXX = ±.010		
PART NO.	SEE SHEETS 2 & 3	DRN	Frank Basile 03/19/14
		CHK.	Frank Basile 03/19/14
		ENG.	03/19/14
		MFG	03/19/14
		G.C.	03/19/14
NEXT ASSY	USED ON	SALES.	03/19/14
APPLICATION BLOCK			



DFCI SOLUTIONS INC.
425 UNION BOULEVARD.
WEST ISLIP, NEW YORK 11795

TITLE: **PA-3500 RECEPTACLE STRIP WITH SPECIAL END CUTS 3590-241901-H*****

SIZE	FSCM NO	DWG. NO.	REV.
A	72794	C3590-241901-H	A

SCALE: NTS WEIGHT: SHEET 3 OF 3