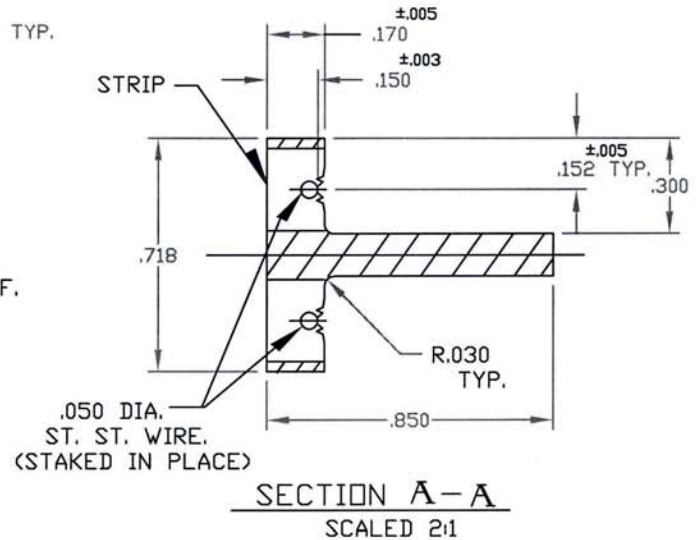
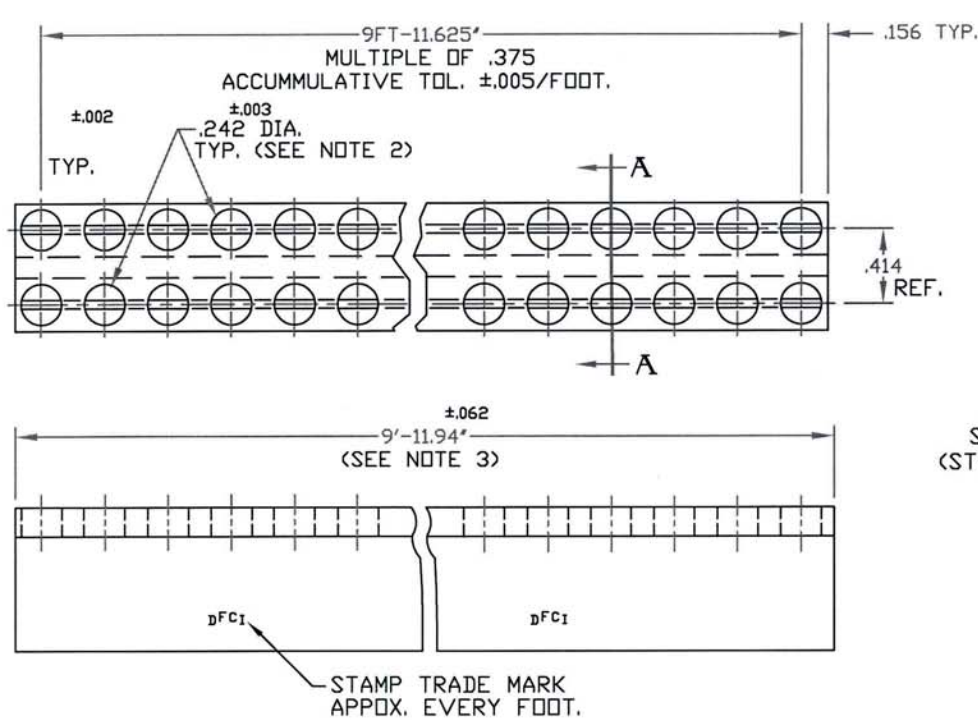


UNCONTROLLED

C3590-24865 SHT. 1of2 REV. D

REVISIONS			
SYM	DESCRIPTION	DATE	APPROV
D	ADD HOLES INF. ECN 1089	7-22-08	R.C.



FOR PART NO. REFER TO SHEET 2.

MAT'L PER NOTE 1.		TOLERANCES ON DIMENSIONS UNLESS OTHERWISE SPECIFIED X* = ±2* .XX = ±.015 X/X = ±1/32 .XXX = ±.010		MACHINE FINISH 125/		DFCI SOLUTIONS INC. 425 UNION BOULEVARD WEST ISLIP, NEW YORK 11795		
HEAT TREAT TEMPER COND. T6.		PART NO.	DRN S. Francis	DATE 1-12-04	TYPE PA-3500 LINE RECEPACLE, 3590-24865-H320			
FINISH CLEAN & FREE OF BURRS.			CHK F. Basil	DATE 7-30-08	DWG. NO. C3590-24865			
<small>THE FASTENER PARTS SHOWN IN THIS PRINT ARE PROPRIETARY ARTICLES TO WHICH DFCI SOLUTIONS INC. RETAINS THE EXCLUSIVE RIGHTS OF MANUFACTURE, USE AND SALE. THE PRINT OR DRAWING IS SUBMITTED IN CONFIDENCE AND DOES NOT CONVEY A LICENSE OR PERMISSION TO MANUFACTURE THE FASTENER OR FASTENER PARTS.</small> © COPYRIGHT 2003, DFCI SOLUTIONS INC. ALL RIGHTS RESERVED. DATE: 07/01/06 FORM: DRAWING		NEXT ASSY	USED ON	MEG Bill	DATE 7-28-08	SIZE A	FSCM NO 72794	REV. D
		APPLICATION BLOCK		SALES	DATE 12/5/08	SCALE NTS	WT.	SHEET 1 OF 2


UNCONTROLLED

REVISIONS			
SYM	DESCRIPTION	DATE	APPROV
D	ADD HOLE INF. ECN 1089	7-22-08	R.C.

NOTES:

1. MATERIALS:  
RECEPTACLE STRIP: 6061-T6 ALUM. ALLOY PER QQ-A-200/8.  
WIRE: .050 DIA. ST. STEEL TYPE 316, PER ASTM-A-313,  
SPRING TEMPER.
2. SOME DISTORTION MAY ENTER THE .242 DIA. HOLE, DUE  
TO STAKING OF WIRE. THIS WILL NOT AFFECT THE  
FUNCTION OF THE PRODUCT.
3. FOR RECEPTACLE LENGTHS SHORTER THAN 9FT-11.94",  
REFER TO DRAWING NO. C3590-24865-H.
4. PLEASE VISIT WWW.DFCIS.COM/C3590-24865 FOR A  
LIST OF AVAILABLE FINISHES.

PART NO.	NUMBER OF Ø.242 HOLES PER STRIP
3590-24865-H320	320 PER ROW

MAT'L PER NOTE 1.	TOLERANCES ON DIMENSIONS UNLESS OTHERWISE SPECIFIED X* = ±2* .XX = ±.015 X/X = ±1/32 .XXX = ±.010 MACHINE FINISH 125T		 <b>DFCI SOLUTIONS INC.</b> 425 UNION BOULEVARD WEST ISLIP, NEW YORK 11795			
HEAT TREAT TEMPER COND. T6.	PART NO.	DRN S. FRANGS DATE 1-12-04	<b>PA-3500 LINE RECEPTACLE, 3590-24865-H320.</b>			
FINISH CLEAN & FREE OF BURRS.		CHK F. Basil DATE 7-30-08				
		ENG K. Loeber DATE 7-28-08	SIZE A	FSCM NO 72794	DWG. NO. C3590-24865	REV. D
	NEXT ASSY	USED ON	MFG B. Hillen DATE 7-23-06	SCALE NTS	WT.	SHEET 2 OF 2
		APPLICATION BLOCK	SALES			

THE FASTENER PARTS SHOWN IN THIS PRINT ARE PROPRIETARY ARTICLES TO WHICH DFCI SOLUTIONS INC. RETAINS THE EXCLUSIVE RIGHTS OF MANUFACTURE, USE AND SALE. THE PRINT OR DRAWING IS SUBMITTED IN CONFIDENCE AND DOES NOT CONVEY A LICENSE OR PERMISSION TO MANUFACTURE THE FASTENER OR FASTENER PARTS.

© COPYRIGHT 2009, DFCI SOLUTIONS INC. ALL RIGHTS RESERVED.  
DATE: 07/01/06 FORM: DRAWING