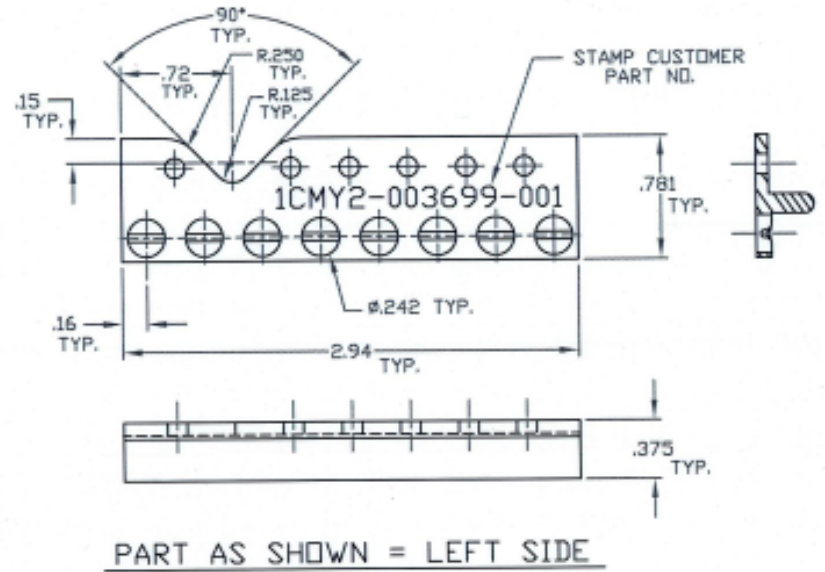


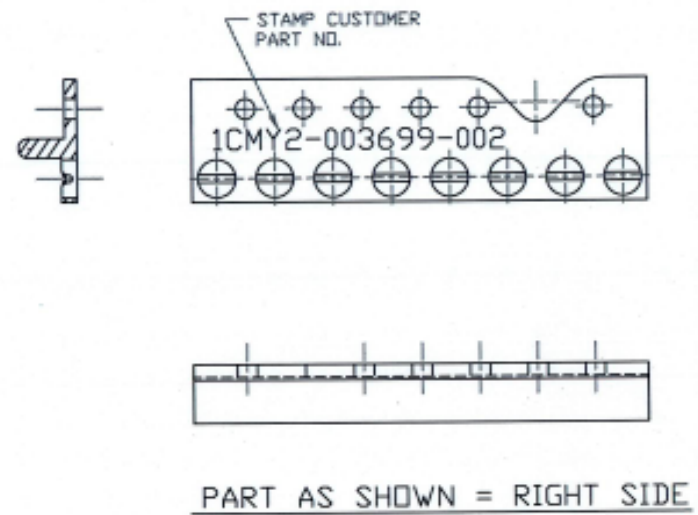
UNCONTROLLED

C3595-241840 SHT. 1of2 REV. A

REVISIONS			
SYM	DESCRIPTION	DATE	APPROV
A	INITIAL RELEASE PER ECN 845	10-2-06	R.OLSEN



PART AS SHOWN = LEFT SIDE



PART AS SHOWN = RIGHT SIDE

CUSTOMER SIGNATURE:	DATE:
DFCI SIGNATURE:	DATE:

MATL PER NOTE 1.	TOLERANCES ON DIMENSIONS UNLESS OTHERWISE SPECIFIED X* = ±2* .XX = ±.015 X/X = ±1/32 .XXX = ±.010		MACHINE FINISH 125T		DFCI SOLUTIONS INC. 425 UNION BOULEVARD WEST ISLIP, NEW YORK 11795	
HEAT TREAT NONE.	PART NO.	DRN S. FRANGIS	DATE 10-2-06	PA-3500 LINE RECEPTACLE, 3595-241840-H8-x		
FINISH CLEAN AND FREE OF BURRS.		CHK I. BARDI	DATE 10/4/06	SIZE A	FSCM NO 72794	DWG. NO. C3595-241840
		ENG R. OLSEN	DATE 10/4/06	REV. A	SHEET 1 OF 2	
		MFG JS	DATE 10-4-06	SCALE WT.		
	NEXT ASSY	USED ON	QC B. HILDEBRAND	DATE 10/4/06		
APPLICATION BLOCK		SALES	DATE			

DATE: 07/01/06 FORM: DRAWING

The parts shown in this print are proprietary articles to which DFCI Solutions, Inc. retains the exclusive rights of manufacture, use and sale. The print or drawing is submitted in confidence and does not convey a license or permission to manufacture the parts. Copyright © 2006 by DFCI Solutions, Inc. All rights reserved.

UNCONTROLLED


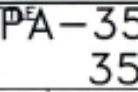
REVISIONS			
SYM	DESCRIPTION	DATE	APPROV
A	INITIAL RELEASE PER ECN 845	10-2-06	R. OLSEN

NOTES:

- MATERIALS:
 STRIP: 6061-T6 ALUM. ALLOY PER QQ-A-200/8.
 WIRE: .050 DIA. ST. STEEL TYPE 316, PER ASTM-A-313,
 PART MAKE FROM: PANEL STRIP PART NO. 3595-H320.
- SOME DISTORTION MAY ENTER THE .242 DIA. HOLE, DUE TO STAKING OF WIRE. THIS WILL NOT AFFECT THE FUNCTION OF THE PRODUCT.

CUSTOMER SIGNATURE:	DATE:
DFCI SIGNATURE:	DATE:

PART NO.	RIGHT OR LEFT
3595-241840-H8-1	LEFT SIDE
3595-241840-H8-2	RIGHT SIDE

MAT'L PER NOTE 1.	TOLERANCES ON DIMENSIONS UNLESS OTHERWISE SPECIFIED $X = \pm 2^{\circ}$.XX = $\pm .015$ $X/X = \pm 1/32$.XXX = $\pm .010$ MACHINE FINISH 125		 DFCI SOLUTIONS INC. 425 UNION BOULEVARD WEST ISLIP, NEW YORK 11795	
HEAT TREAT AS NOTED.	PART NO.	DRN S. F. RANNEY DATE 10-2-06	 PA-3500 LINE RECEPTACLE, 3595-241840-H8-x	
FINISH CLEAN AND FREE OF BURRS.		CHK F. BASH DATE 10/9/06	SIZE A	FSCM NO 72794
<small>THE FASTENER PARTS SHOWN IN THIS PRINT ARE PROPRIETARY ARTICLES TO WHICH DFCI SOLUTIONS INC. RETAINS THE EXCLUSIVE RIGHTS OF MANUFACTURE, USE AND SALE. THE PRINT OR DRAWING IS SUBMITTED IN CONFIDENCE AND DOES NOT CONVEY A LICENSE OR PERMISSION TO MANUFACTURE THE FASTENER OR FASTENER PARTS. © COPYRIGHT 2006, DFCI SOLUTIONS INC. ALL RIGHTS RESERVED.</small>		ENG R. OLSEN DATE 10/9/06	DWG. NO. C3595-241840	REV. A
	NEXT ASSY USED ON	MFG JS DATE 10-4-06	SHEET 2 OF 2	
	APPLICATION BLOCK	SALES B. HILDEBRAND DATE 10-4-06	SCALE	WT.