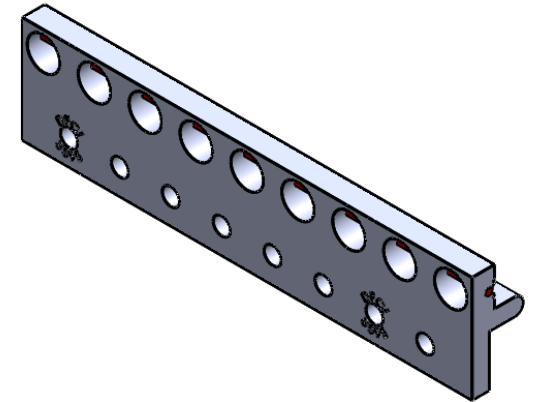
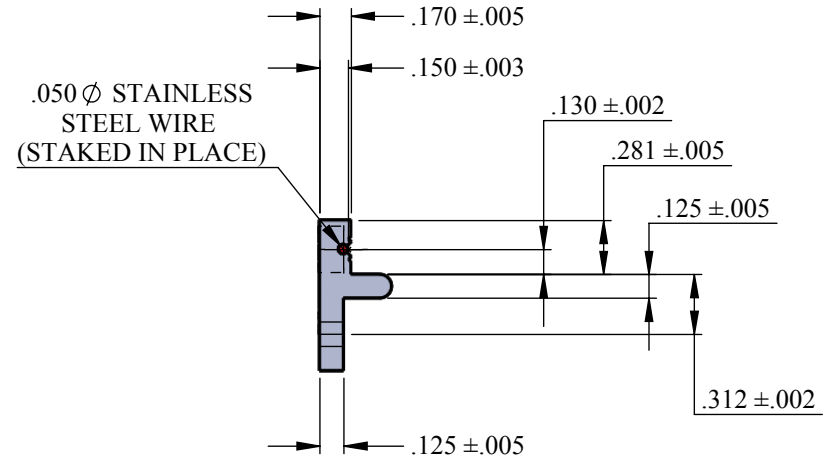
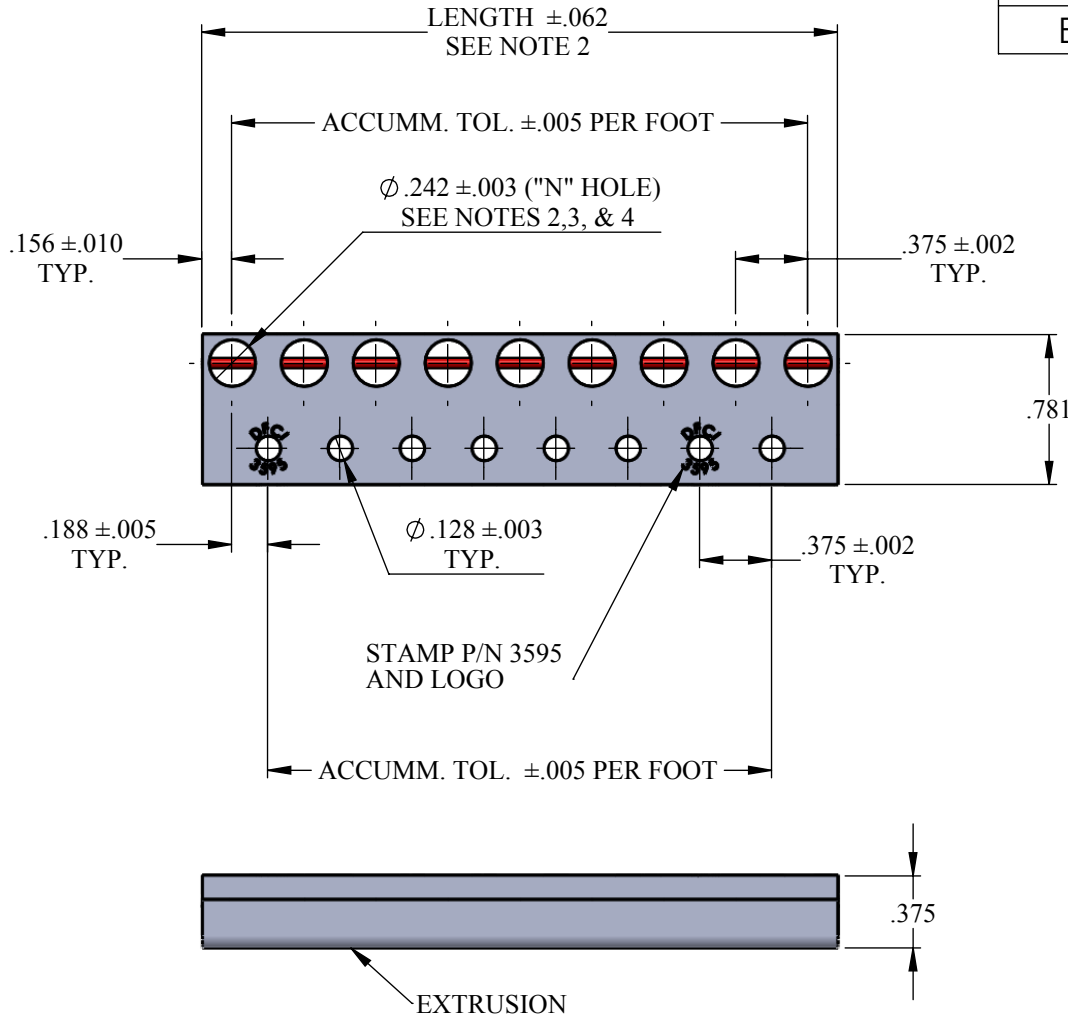


UNCONTROLLED

REVISIONS			
SYS	DESCRIPTION	DATE	APPROV
E	PER ECN 1168	02-01-12	



MATERIAL: SEE NOTE 1 ON SHEET 3 OF 3

HEAT TREAT: NONE

FINISH: NONE, OR ON SPECIAL ORDER PER NOTE 5

THE FASTENER PARTS SHOWN IN THIS PRINT ARE PROPRIETARY ARTICLES TO WHICH DFCI SOLUTIONS INC., RETAINS THE EXCLUSIVE RIGHTS OF MANUFACTURE, USE AND SALE. THE PRINT OR DRAWING IS SUBMITTED IN CONFIDENCE AND DOES NOT CONVEY A LICENSE OR PERMISSION TO MANUFACTURE THE FASTENER OR FASTENER PARTS.

(C) COPYRIGHT 2009, DFCI SOLUTIONS INC. ALL RIGHTS RESERVED.

TOLERANCES ON DIMENSIONS UNLESS OTHERWISE SPECIFIED

X* = $\pm 2^\circ$.XX = $\pm .015$
X/X = $\pm 1/32$.XXX = $\pm .010$ MACHINE FINISH = 125

PART NO.	3595-H***	DRN	Frank Basile	DATE	02-01-12
CHK.		CHK.	Frank Basile	DATE	02-01-12
ENG.		ENG.	Robert Altabrand	DATE	02-01-12
MFG.		MFG.	Christopher J. Pomicino	DATE	02-01-12
Q.C.		Q.C.	Robert Altabrand	DATE	02-01-12
NEXT ASSY	USED ON	EXTRUSION			



DFCI SOLUTIONS INC.
425 UNION BOULEVARD.
WEST ISLIP, NEW YORK 11795

TITLE PA-3500 CUT TO LENGTH RECEPTACLE
3595-H***

SIZE	FSCM NO	DWG. NO.	REV.
A	72794	C3595-H	E

SCALE: NTS

WEIGHT:

SHEET 1 OF 3

UNCONTROLLED

REVISIONS

SYS	DESCRIPTION	DATE	APPROV
E	PER ECN 1168	02-01-12	

PART NUMBER	NUMBER OF "N" HOLES	PART NUMBER	NUMBER OF "N" HOLES	PART NUMBER	NUMBER OF "N" HOLES	PART NUMBER	NUMBER OF "N" HOLES	PART NUMBER	NUMBER OF "N" HOLES	PART NUMBER	NUMBER OF "N" HOLES
3595-H3	3	3595-H35	35	3595-H67	67	3595-H99	99	3595-H131	131	3595-H163	163
3595-H4	4	3595-H36	36	3595-H68	68	3595-H100	100	3595-H132	132	3595-H164	164
3595-H5	5	3595-H37	37	3595-H69	69	3595-H101	101	3595-H133	133	3595-H165	165
3595-H6	6	3595-H38	38	3595-H70	70	3595-H102	102	3595-H134	134	3595-H166	166
3595-H7	7	3595-H39	39	3595-H71	71	3595-H103	103	3595-H135	135	3595-H167	167
3595-H8	8	3595-H40	40	3595-H72	72	3595-H104	104	3595-H136	136	3595-H168	168
3595-H9	9	3595-H41	41	3595-H73	73	3595-H105	105	3595-H137	137	3595-H169	169
3595-H10	10	3595-H42	42	3595-H74	74	3595-H106	106	3595-H138	138	3595-H170	170
3595-H11	11	3595-H43	43	3595-H75	75	3595-H107	107	3595-H139	139	3595-H171	171
3595-H12	12	3595-H44	44	3595-H76	76	3595-H108	108	3595-H140	140	3595-H172	172
3595-H13	13	3595-H45	45	3595-H77	77	3595-H109	109	3595-H141	141	3595-H173	173
3595-H14	14	3595-H46	46	3595-H78	78	3595-H110	110	3595-H142	142	3595-H174	174
3595-H15	15	3595-H47	47	3595-H79	79	3595-H111	111	3595-H143	143	3595-H175	175
3595-H16	16	3595-H48	48	3595-H80	80	3595-H112	112	3595-H144	144	3595-H176	176
3595-H17	17	3595-H49	49	3595-H81	81	3595-H113	113	3595-H145	145	3595-H177	177
3595-H18	18	3595-H50	50	3595-H82	82	3595-H114	114	3595-H146	146	3595-H178	178
3595-H19	19	3595-H51	51	3595-H83	83	3595-H115	115	3595-H147	147	3595-H179	179
3595-H20	20	3595-H52	52	3595-H84	84	3595-H116	116	3595-H148	148	3595-H180	180
3595-H21	21	3595-H53	53	3595-H85	85	3595-H117	117	3595-H149	149	3595-H181	181
3595-H22	22	3595-H54	54	3595-H86	86	3595-H118	118	3595-H150	150	3595-H182	182
3595-H23	23	3595-H55	55	3595-H87	87	3595-H119	119	3595-H151	151	3595-H183	183
3595-H24	24	3595-H56	56	3595-H88	88	3595-H120	120	3595-H152	152	3595-H184	184
3595-H25	25	3595-H57	57	3595-H89	89	3595-H121	121	3595-H153	153	3595-H185	185
3595-H26	26	3595-H58	58	3595-H90	90	3595-H122	122	3595-H154	154	3595-H186	186
3595-H27	27	3595-H59	59	3595-H91	91	3595-H123	123	3595-H155	155	3595-H187	187
3595-H28	28	3595-H60	60	3595-H92	92	3595-H124	124	3595-H156	156	3595-H188	188
3595-H29	29	3595-H61	61	3595-H93	93	3595-H125	125	3595-H157	157	3595-H189	189
3595-H30	30	3595-H62	62	3595-H94	94	3595-H126	126	3595-H158	158	3595-H190	190
3595-H31	31	3595-H63	63	3595-H95	95	3595-H127	127	3595-H159	159	3595-H191	191
3595-H32	32	3595-H64	64	3595-H96	96	3595-H128	128	3595-H160	160	3595-H192	192
3595-H33	33	3595-H65	65	3595-H97	97	3595-H129	129	3595-H161	161	3595-H193	193
3595-H34	34	3595-H66	66	3595-H98	98	3595-H130	130	3595-H162	162	3595-H194	194

MATERIAL: SEE NOTE 1 ON SHEET 3 OF 3

HEAT TREAT: NONE

FINISH: NONE, OR ON SPECIAL ORDER PER NOTE 5

THE FASTENER PARTS SHOWN IN THIS PRINT ARE PROPRIETARY ARTICLES TO WHICH DFCI SOLUTIONS INC., RETAINS THE EXCLUSIVE RIGHTS OF MANUFACTURE, USE AND SALE. THE PRINT OR DRAWING IS SUBMITTED IN CONFIDENCE AND DOES NOT CONVEY A LICENSE OR PERMISSION TO MANUFACTURE THE FASTENER OR FASTENER PARTS.

(C) COPYRIGHT 2009, DFCI SOLUTIONS INC. ALL RIGHTS RESERVED.

TOLERANCES ON DIMENSIONS UNLESS OTHERWISE SPECIFIED

X* = ±2* .XX = ±.015
X/X = ±1/32 .XXX = ±.010
MACHINE FINISH = .125

PART NO.	3595-H***	DRN	Frank Basile	DATE	02-01-12
		CHK.	Frank Basile	DATE	02-01-12
		ENG.	Robert Alldread	DATE	02-01-12
		MFG.	Christopher Pennell	DATE	02-01-12
		G.C.	Robert Alldread	DATE	02-01-12
NEXT ASSY	USED ON	SALES		DATE	



DFCI SOLUTIONS INC.

425 UNION BOULEVARD,
WEST ISLIP, NEW YORK 11795

TITLE: PA-3500 CUT TO LENGTH RECEPTACLE
3595-H

SIZE	FSCM NO.	DWG. NO.	REV.
A	72794	C3595-H	E

SCALE: NTS

WEIGHT:

SHEET 2 OF 3

UNCONTROLLED

REVISIONS			
SYS	DESCRIPTION	DATE	APPROV
E	PER ECN 1168	02-02-12	

PART NUMBER	NUMBER OF "N" HOLES	PART NUMBER	NUMBER OF "N" HOLES	PART NUMBER	NUMBER OF "N" HOLES	PART NUMBER	NUMBER OF "N" HOLES
3595-H195	195	3595-H227	227	3595-H259	259	3595-H291	291
3595-H196	196	3595-H228	228	3595-H260	260	3595-H292	292
3595-H197	197	3595-H229	229	3595-H261	261	3595-H293	293
3595-H198	198	3595-H230	230	3595-H262	262	3595-H294	294
3595-H199	199	3595-H231	231	3595-H263	263	3595-H295	295
3595-H200	200	3595-H232	232	3595-H264	264	3595-H296	296
3595-H201	201	3595-H233	233	3595-H265	265	3595-H297	297
3595-H202	202	3595-H234	234	3595-H266	266	3595-H298	298
3595-H203	203	3595-H235	235	3595-H267	267	3595-H299	299
3595-H204	204	3595-H236	236	3595-H268	268	3595-H300	300
3595-H205	205	3595-H237	237	3595-H269	269	3595-H301	301
3595-H206	206	3595-H238	238	3595-H270	270	3595-H302	302
3595-H207	207	3595-H239	239	3595-H271	271	3595-H303	303
3595-H208	208	3595-H240	240	3595-H272	272	3595-H304	304
3595-H209	209	3595-H241	241	3595-H273	273	3595-H305	305
3595-H210	210	3595-H242	242	3595-H274	274	3595-H306	306
3595-H211	211	3595-H243	243	3595-H275	275	3595-H307	307
3595-H212	212	3595-H244	244	3595-H276	276	3595-H308	308
3595-H213	213	3595-H245	245	3595-H277	277	3595-H309	309
3595-H214	214	3595-H246	246	3595-H278	278	3595-H310	310
3595-H215	215	3595-H247	247	3595-H279	279	3595-H311	311
3595-H216	216	3595-H248	248	3595-H280	280	3595-H312	312
3595-H217	217	3595-H249	249	3595-H281	281	3595-H313	313
3595-H218	218	3595-H250	250	3595-H282	282	3595-H314	314
3595-H219	219	3595-H251	251	3595-H283	283	3595-H315	315
3595-H220	220	3595-H252	252	3595-H284	284	3595-H316	316
3595-H221	221	3595-H253	253	3595-H285	285	3595-H317	317
3595-H222	222	3595-H254	254	3595-H286	286	3595-H318	318
3595-H223	223	3595-H255	255	3595-H287	287	3595-H319	319
3595-H224	224	3595-H256	256	3595-H288	288	3595-H320	320
3595-H225	225	3595-H257	257	3595-H289	289		
3595-H226	226	3595-H258	258	3595-H290	290		

NOTES:

- 1.MATERIALS:**
WIRE-TYPE 316 STAINLESS STEEL PER ASTM-A-313 SPRING TEMPER.
EXTRUSION-6061-T6 ALUMINUM ALLOY PER QQ-A-200/8
- 2.THE CUT LENGTH IS CALCULATED AS FOLLOWS:**
TOTAL LENGTH=(N-1)(.375)+.312
EXAMPLE :3595-H50
(50-1)(.375)+.312=18.687 in.
THE NUMBER OF HOLES PER PART ARE CALLED OUT IN THE PART NUMBER.
EXAMPLE: 3595-H50 INDICATES 50 HOLES IN THE RECEPTACLE.
- 3.SOME DISTORTION MAY ENTER THE .242 DIA. HOLE DUE TO STAKING OF WIRE. THIS WILL NOT AFFECT THE FUNCTION OF THE PRODUCT.**
- 4.PARTS ARE TO BE ORDERED ACCORDING TO THE NUMBER OF HOLES REQUIRED.**
EXAMPLE: PN. 3595-H24 WILL PROVIDE 24 RECEPTACLE HOLES.
- 5.PLEASE VISIT www.dfci.com/c3595 FOR A LIST OF AVAILABLE FINISHES.**

MATERIAL: SEE NOTE 1 ON SHEET 3 OF 3

TOLERANCES ON DIMENSIONS UNLESS OTHERWISE SPECIFIED

X" = ±2° .XX = ±.015
X/X = ±1/32 .XXX = ±.010 MACHINE FINISH = .125

HEAT TREAT: NONE

PART NO. 3595-H*** DRN DATE
Frank Basile 02-01-12

FINISH: NONE, OR ON SPECIAL ORDER PER NOTE 5

CHK. *Frank Basile* 02-01-12

ENG. *Frank Basile* 02-01-12

MFG. *Chetan J. Parnik* 02-01-12

G.C. *Frank Basile* 02-01-12

SALES. DATE

THE FASTENER PARTS SHOWN IN THIS PRINT ARE PROPRIETARY ARTICLES TO WHICH DFCI SOLUTIONS INC., RETAINS THE EXCLUSIVE RIGHTS OF MANUFACTURE, USE AND SALE. THE PRINT OR DRAWING IS SUBMITTED IN CONFIDENCE AND DOES NOT CONVEY A LICENSE OR PERMISSION TO MANUFACTURE THE FASTENER OR FASTENER PARTS.

(C) COPYRIGHT 2009, DFCI SOLUTIONS INC. ALL RIGHTS RESERVED.

NEXT ASSY USED ON APPLICATION BLOCK



DFCI SOLUTIONS INC.
425 UNION BOULEVARD.
WEST ISLIP, NEW YORK 11795

TITLE PA-3500 CUT TO LENGTH RECEPTACLE
3595-H***

SIZE	FSCM NO	DWG. NO.	REV.
A	72794	C3595-H	E

SCALE: NTS WEIGHT: SHEET 3 OF 3