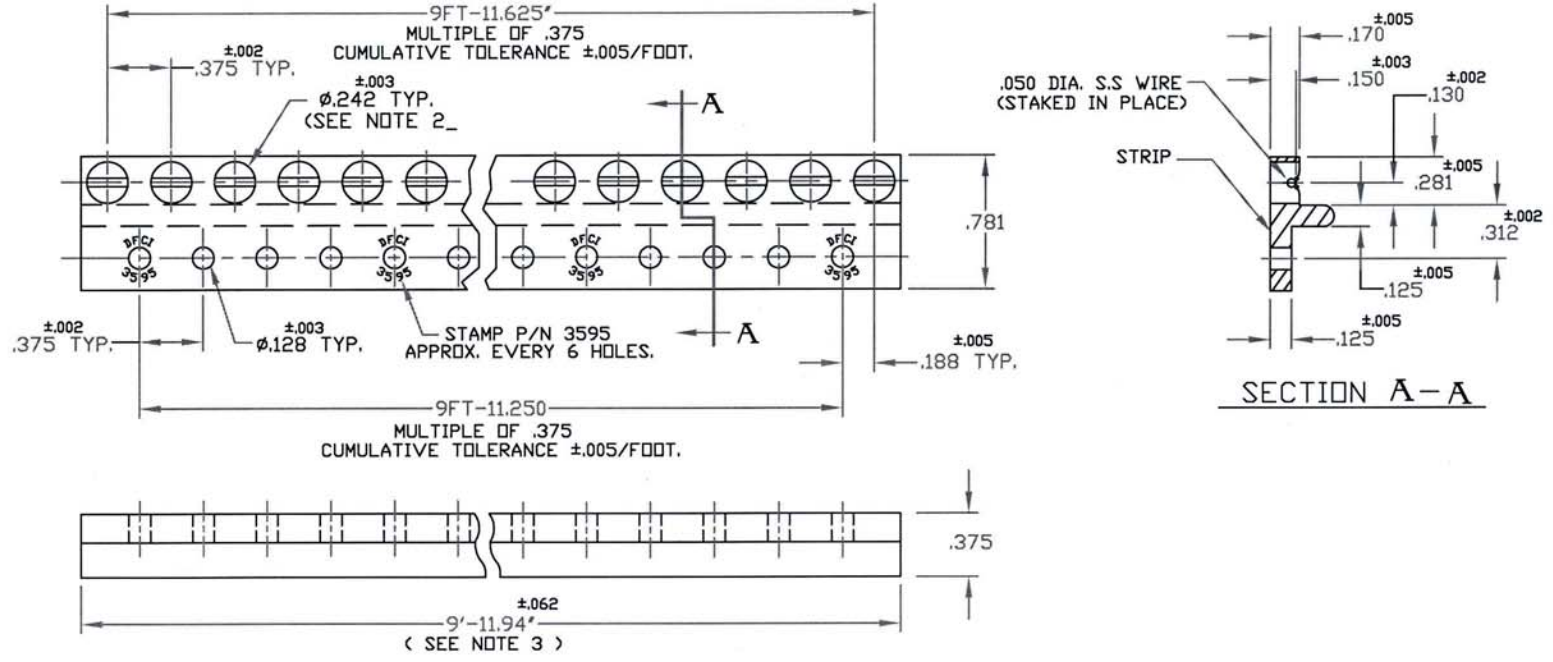



UNCONTROLLED

C3595 SHT. 1 of 2 REV. E

REVISIONS			
SYM	DESCRIPTION	DATE	APPROV
E	ADD HOLE INF. ECN 1089	7-22-08	R.C.



FOR PART NO. REFER SHEET 2 of 2.

MAT'L PER NOTE 1.	TOLERANCES ON DIMENSIONS UNLESS OTHERWISE SPECIFIED X° = ±2° .XX = ±.015 X/X = ±1/32 .XXX = ±.010 MACHINE FINISH 125T		 DFCI SOLUTIONS INC. 425 UNION BOULEVARD WEST ISLIP, NEW YORK 11795	
HEAT TREAT TEMPER COND. T6.	PART NO.	DRN S. FRANCIS	DATE 8-11-03	PA-3500 LINE RECEPTACLE, 3595-H320.
FINISH SEE NOTE 4.		CHK F. Basil	DATE 7-30-08	
<small>THE FASTENER PARTS SHOWN IN THIS PRINT ARE PROPRIETARY ARTICLES TO WHICH DFCI SOLUTIONS INC. RETAINS THE EXCLUSIVE RIGHTS OF MANUFACTURE, USE AND SALE. THE PRINT OR DRAWING IS SUBMITTED IN CONFIDENCE AND DOES NOT CONVEY A LICENSE OR PERMISSION TO MANUFACTURE THE FASTENER OR FASTENER PARTS.</small> <small>© COPYRIGHT 2003, DFCI SOLUTIONS INC. ALL RIGHTS RESERVED.</small> DATE: 07/01/06 FORM: DRAWING	NEXT ASSY	USED ON	MFG Bill Vel	DATE 7-25-08
	APPLICATION BLOCK	SALES	B. Hilde	DATE 7/28/08
	SCALE	NTS	WT.	SIZE A
			DWG. NO. C3595	REV. E
			SHEET	1 OF 2


UNCONTROLLED

REVISIONS			
SYM	DESCRIPTION	DATE	APPROV
E	ADD HOLE INF. ECN 1089	7-22-08	R.C.

PART NO.	NUMBER OF Ø.242 HOLES PER STRIP
3595-H320	320

NOTES:

1. MATERIALS:
STRIP: 6061-T6 ALUM. ALLOY PER QQ-A-200/8.
WIRE: .050 DIA. ST. STEEL TYPE 316, PER ASTM-A-313, SPRING TEMPER.
2. SOME DISTORTION MAY ENTER THE .242 DIA. HOLE, DUE TO STAKING OF WIRE. THIS WILL NOT AFFECT THE FUNCTION OF THE PRODUCT.
3. FOR RECEPTACLE LENGTHS SHORTER THAN 9FT-11.94", REFER TO DRAWING NO. C3595-H.
4. PLEASE VISIT WWW.DFCIS.COM/C3595 FOR A LIST OF AVAILABLE FINISHES.

MAT'L PER NOTE 1.		TOLERANCES ON DIMENSIONS UNLESS OTHERWISE SPECIFIED X* = ±2* .XX = ±.015 X/X = ±1/32 .XXX = ±.010 MACHINE FINISH 125T		 DFCI SOLUTIONS INC. 425 UNION BOULEVARD WEST ISLIP, NEW YORK 11795	
HEAT TREAT TEMPER COND. T6.		PART NO.	DRN S. Francis DATE 8-11-03		
FINISH SEE NOTE 4.			CHK F. Basil DATE 7-20-08	SIZE	FSCM NO
<small>THE FASTENER PARTS SHOWN IN THIS PRINT ARE PROPRIETARY ARTICLES TO WHICH DFCI SOLUTIONS INC. RETAINS THE EXCLUSIVE RIGHTS OF MANUFACTURE, USE AND SALE. THE PRINT OR DRAWING IS SUBMITTED IN CONFIDENCE AND DOES NOT CONVEY A LICENSE OR PERMISSION TO MANUFACTURE THE FASTENER OR FASTENER PARTS.</small> © COPYRIGHT 2003, DFCI SOLUTIONS INC. ALL RIGHTS RESERVED. DATE: 07/01/06 FORM: DRAWING		NEXT ASSY	USED ON	ENG B. Heidecker DATE 7/23/08	DWG. NO.
		APPLICATION BLOCK	SALES	DATE	C3595
				SCALE	WT.
				NTS	SHEET 2 OF 2
				REV.	E