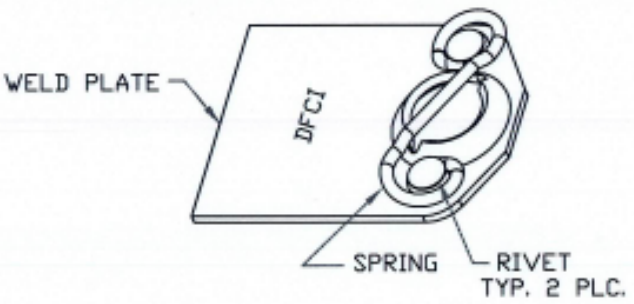
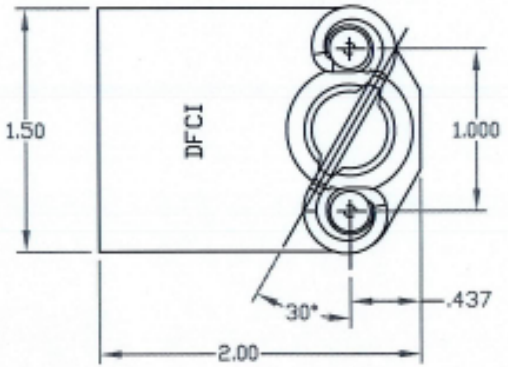



UNCONTROLLED

REVISIONS			
SYM	DESCRIPTION	DATE	APPROV
A	INITIAL RELEASE PER ECN 845.	3-4-08	R. GLESON



MATL PER NOTE 3.	TOLERANCES ON DIMENSIONS UNLESS OTHERWISE SPECIFIED X = ±2" .XX = ±.015 X/X = ±1/32 .XXX = ±.010 MACHINE FINISH 125		 DFCI SOLUTIONS INC. 425 UNION BOULEVARD WEST ISLIP, NEW YORK 11795	
HEAT TREAT NONE.	PART NO.	DRN S. Francis	DATE 3-4-08	WELD PLT. RECEPTACLE ASSY. 4639-24945-xxx SIZE A FSCM NO. 72794 DWG. NO. C4639-24945 REV. A
FINISH PER NOTE 1 & 2		CHK T. Basil	DATE 3-5-08	
		ENG R. Gleason	DATE 3-5-08	
		MFG B. Hildner	DATE 3/5/08	
THE PARTS SHOWN ON THIS PRINT ARE PROPRIETARY ARTICLES TO WHICH DFCI SOLUTIONS INC. RETAINS THE EXCLUSIVE RIGHTS OF MANUFACTURE, USE AND SALE. THE PRINT OR DRAWING IS SUBMITTED IN CONFIDENCE AND DOES NOT CONVEY A LICENSE OR PERMISSION TO MANUFACTURE THE PARTS OR PARTS THEREOF. <small>© COPYRIGHT 2008, DFCI SOLUTIONS INC. ALL RIGHTS RESERVED.</small>		NEXT ASSY	USED ON	SALES
DATE: 07/01/06 FORM: DRAWING		APPLICATION BLOCK		SCALE NTS WT. SHEET 1 OF 2


UNCONTROLLED

REVISIONS			
SYM	DESCRIPTION	DATE	APPROV
A	NITIAL RELEASE PER ECN 845.	3-4-08	<i>P. OLSEN</i>

WELD PLATE ASSY. PART # (STEEL)	H
4639-24945-285	.285
4639-24945-310	.310
4639-24945-335	.335
4639-24945-360	.360
4639-24945-385	.385
4639-24945-410	.410
PART # (ST. STEEL)	H
4639-24945-285-SS	.285
4639-24945-310-SS	.310
4639-24945-335-SS	.335
4639-24945-360-SS	.360
4639-24945-385-SS	.385
4639-24945-410-SS	.410

NOTES:

1. FINISH: STEEL WELD PLATE ASSY. ONLY:
AFTER RIVETING WELD PLATE TO SPRING,
THE ENTIRE ASSEMBLY DIP IN BLACK BEAR.
(ANTI-RUST SOLUTION.)
2. FINISH:
STEEL SPRING MUSIC WIRE:
ZINC PLATE PER ASTM-B-633, TYPE III, SC 2, CLEAR
TRIVALENT CHROMATE WITH SEALER. (ROHS COMPLIANT)
ST. STEEL SPRING: PASSIVATED.
3. MATERIAL:
WELD PLATE: C1010 STEEL OR TYPE 302 ST. STEEL.
SPRING: MUSIC WIRE FOR STEEL OR TYPE 17-7 STAINLESS.
RIVET: ST. STEEL.

MATL PER NOTE 3.	TOLERANCES ON DIMENSIONS UNLESS OTHERWISE SPECIFIED X = ±2" .XX = ±.015 X/X = ±1/32 .XXX = ±.010 MACHINE FINISH 125T		 DFCI SOLUTIONS INC. 425 UNION BOULEVARD WEST ISLIP, NEW YORK 11795	
HEAT TREAT NONE.	PART NO.	DRN <i>S. Francis</i> DATE 3-4-08	WELD PLT. RECEPTACLE ASSY. 4639-24945-xxx	
FINISH PER NOTE 1 & 2.		CHK <i>F. Basile</i> DATE 3-5-08	SIZE A	FSCM NO 72794
<small>THE FASTENER PARTS SHOWN ON THIS PRINT ARE PROPRIETARY ARTICLES TO WHICH DFCI SOLUTIONS, INC. RETAINS THE EXCLUSIVE RIGHTS OF MANUFACTURE, USE AND SALE. THE PRINT OR DRAWING IS SUBMITTED IN CONFIDENCE AND DOES NOT CONVEY A LICENSE OR PERMISSION TO MANUFACTURE THE FASTENER OR FASTENER PARTS. © COPYRIGHT 2008, DFCI SOLUTIONS INC. ALL RIGHTS RESERVED.</small>	NEXT ASSY	USED ON	DWG. NO. C4639-24945	REV. A
	APPLICATION BLOCK	SALES	DATE 3/5/08	SHEET 2 OF 2

DATE: 07/01/06 FORM: DRAWING