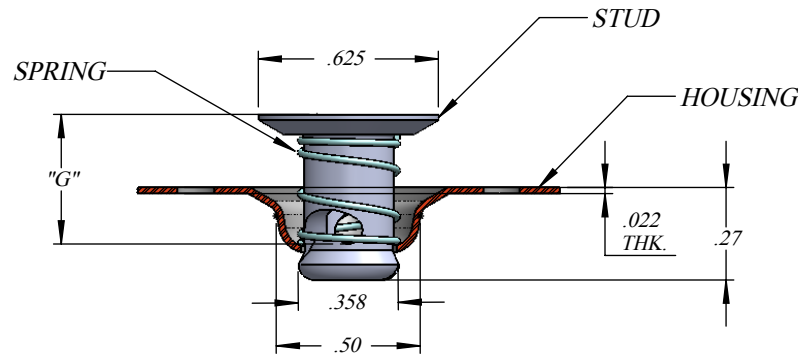
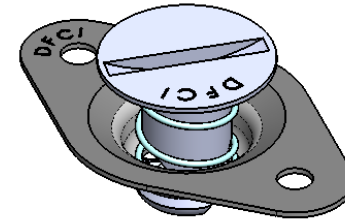
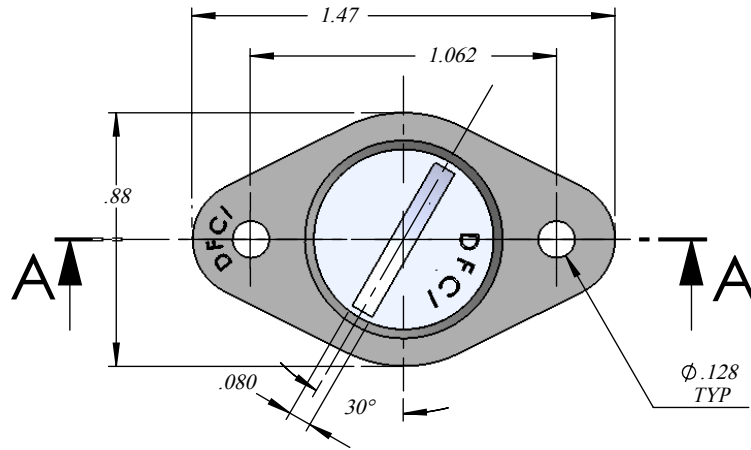



UNCONTROLLED

| REVISIONS | | | |
|-----------|-----------------|----------|--------|
| SYS | DESCRIPTION | DATE | APPROV |
| A | INITIAL RELEASE | 05/25/10 | F.B |



SECTION A-A
UN-LOCKED POSITION

FOR PART NO. REFER TO SHEET 2 OF 2

| | | | | | | | |
|--|--|------------------------|------------------------------|------------|---|---|---------------|
| MATERIAL: PER NOTE 1 | TOLERANCES ON DIMENSIONS UNLESS OTHERWISE SPECIFIED | | | |  <p>DFCI SOLUTIONS INC. 425 UNION BOULEVARD. WEST ISLIP, NEW YORK 11795</p> | <p>TITLE: ST-1200 EJECT STUD ASSY. 4639-5</p> | <p>REV. A</p> |
| HEAT TREAT: PER NOTE 2 | X* = ±2° .XX = ±.015 MACHINE FINISH = 125/7 X/X = ±1/32 .XXX = ±.010 | | | | | | |
| FINISH: PER NOTE 3 | PART NO. | DRN | DATE | | | | |
| THE FASTENER PARTS SHOWN IN THIS PRINT ARE PROPERTY ARTICLES TO WHICH DFCI SOLUTIONS INC., RETAINS THE EXCLUSIVE RIGHTS OF MANUFACTURE, USE AND SALE. THE PRINT OF DRAWING IS SUBMITTED IN CONFIDENCE AND DOES NOT CONVEY A LICENSE OR PERMISSION TO MANUFACTURE THE FASTENER OR FASTENER PARTS. (C) COPYRIGHT 2009, DFCI SOLUTIONS INC. ALL RIGHTS RESERVED. | | CHK. <i>W. Zhindon</i> | DATE | 05/25/10 | | | |
| | | | ENG. <i>Frank Basile</i> | DATE | | | |
| | | | MFG. <i>Robert Alldorand</i> | DATE | 05/25/10 | | |
| | | | MFG. <i>Bill Velazquez</i> | DATE | 05/25/10 | | |
| | | | G.C. <i>Robert Alldorand</i> | DATE | 05/25/10 | | |
| | NEXT ASSY | USED ON | SALES. | DATE | | SIZE A FSCM NO 72794 DWG. NO. C4639-5 | |
| APPLICATION BLOCK | | | | SCALE: NTS | WEIGHT: | SHEET 1 OF 2 | |

UNCONTROLLED

REVISIONS

| SYS | DESCRIPTION | DATE | APPROV |
|-----|-----------------|----------|--------|
| A | INITIAL RELEASE | 05/25/10 | F.B |

NOTES:

1. **MATERIAL:**

STUD: PER A.I.S.I 8620 STEEL
 HOUSING: PER A.I.S.I 1008 OR 1010 STEEL
 SPRING: ST. STEEL 300 SERIES, SPRING TEMPER.

2. **HEAT TREAT:**

STEEL STUD ONLY, ROCKWELL C27-33

3. **FINISH:**

STUD & HOUSING

ZINC PLATE ASTM -B-633, TYPE III, SC 2, CLEAR TRIVALENT CHROMATE WITH SEALER.
 (RoHS COMPLIANT) FINISH SUFFIX: -Z3CT

THE ABOVE MENTIONED FINISH WILL BE SUPPLIED AS THE STANDARD FINISH UPON DEPLETION OF EXISTING STOCK WHICH ARE FINISHED AS FOLLOW:

ZINC PLATE PER ASTM-B-633, TYPE III, SC 2, CLEAR CHROMATE. (FINISH SUFFIX: -Z3C)

SPRING:


NATURAL

4. FOR THE APPLICATION OF ALTERNATIVE FINISHES, REMOVE SUFFIX -Z3CT FROM THE PART NO. AND ADD THE REQUIRED FINISH TO THE PART NO. SUFFIX.

EXAMPLE: FOR YELLOW ZINC TRIVALENT CHROMATE, 4639-55-400-Z3YT

5. PLEASE VISIT WWW.DFCIS.COM/C4639-55 FOR A LIST OF AVAILABLE FINISHES.

| STUD ASSY. PART NO FOR 8620 STEEL | "G" |
|-----------------------------------|------|
| 4639-55-400-Z3CT | .400 |
| 4639-55-500-Z3CT | .500 |
| 4639-55-550-Z3CT | .550 |
| 4639-55-600-Z3CT | .600 |

| | | | | | | | | | | |
|--|---|---------|------|------------|---|---|--------------|---------|----------|------|
| MATERIAL: PER NOTE 1 | TOLERANCES ON DIMENSIONS UNLESS OTHERWISE SPECIFIED X* = ±2° .XX = ±.015 X/X = ±1/32 .XXX = ±.010 MACHINE FINISH = 1257 | | | |  <p>DFCI SOLUTIONS INC. 425 UNION BOULEVARD. WEST ISLIP, NEW YORK 11795</p> | <p>ST-1200 EJECT STUD ASSY. 4639-5</p> | SIZE | FSCM NO | DWG. NO. | REV. |
| HEAT TREAT: PER NOTE 2 | PART NO. | DRN | DATE | A | | | 72794 | C4639-5 | A | |
| FINISH: PER NOTE 3 | | CHK. | DATE | SCALE: NTS | | | | | | |
| | | ENG. | DATE | | | | | WEIGHT: | | |
| THE FASTENER PARTS SHOWN IN THIS PRINT ARE PROPERTY ARTICLES TO WHICH DFCI SOLUTIONS INC., RETAINS THE EXCLUSIVE RIGHTS OF MANUFACTURE, USE AND SALE. THE PRINT OF DRAWING IS SUBMITTED IN CONFIDENCE AND DOES NOT CONVEY A LICENSE OR PERMISSION TO MANUFACTURE THE FASTENER OR FASTENER PARTS. (C) COPYRIGHT 2009, DFCI SOLUTIONS INC. ALL RIGHTS RESERVED. | NEXT ASSY | USED ON | MFG. | DATE | | | SHEET 2 OF 2 | | | |
| | | | G.C. | DATE | | | | | | |
| | | SALES. | DATE | | | | | | | |