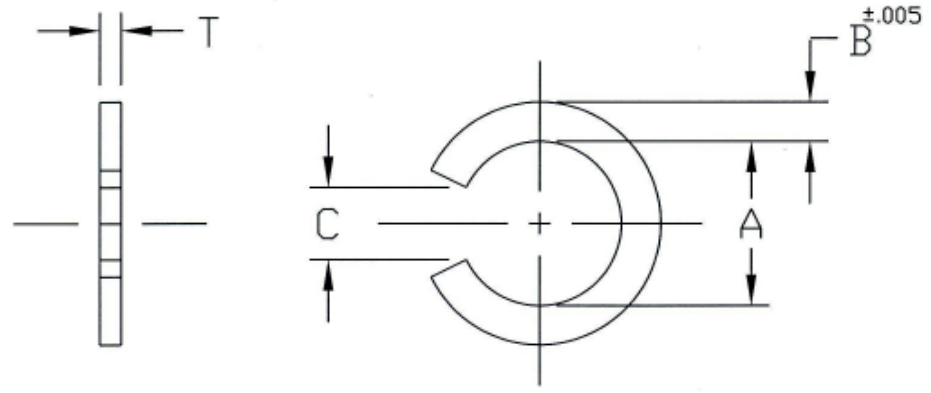


UNCONTROLLED

C5723-A5 REV. C

REVISIONS			
SYM	DESCRIPTION	DATE	APPROV
C	CHNG MFG DWG. ECN 1144.	5-28-09	<i>FB</i>



PART NO.	WEIGHT (LBS.)	A	B	C	T
5723-A512-SS	.0003	+0.000/-0.014 .230	.046	+0.008/-0.000 .143	±.002 .031
5723-A514-SS	.0004	+0.000/-0.016 .260	.062	+0.011/-0.000 .182	
5723-A516-SS	.0008	+0.000/-0.019 .328	.079	+0.011/-0.000 .191	±.002 .039
5723-A518-SS	.0015	+0.000/-0.019 .394	.094	+0.016/-0.000 .264	+0.000/-0.004 .047
5723-A520-SS	.0024	+0.000/-0.023 .459	.109	+0.012/-0.000 .203	+0.000/-0.004 .055

<b>MAT'L</b> TYPE 302 STAINLESS STEEL.		<b>TOLERANCES ON DIMENSIONS UNLESS OTHERWISE SPECIFIED</b> $X = \pm 2^*$ $.XX = \pm .015$ $X/X = \pm 1/32$ $.XXX = \pm .010$			<b>MACHINE FINISH</b> .125T			<b>DFCI SOLUTIONS INC.</b> 425 UNION BOULEVARD WEST ISLIP, NEW YORK 11795			
<b>HEAT TREAT</b> NONE.		<b>PART NO.</b>		<b>DRN</b> S. FRANKS <b>DATE</b> 11-1-06		<b>TITLE</b> UN-5700 LINE RETAINER, 5723-A5xx-SS.			<b>REV.</b> C		
<b>FINISH</b> NATURAL.		<b>CHK</b> <i>F. Basile</i> <b>DATE</b> 5-28-09		<b>ENG</b> <i>B. Kilduff</i> <b>DATE</b> 5-28-09		<b>SIZE</b> A <b>FSCM NO</b> 72794 <b>DWG. NO.</b> C5723-A5		<b>SCALE</b> NTS <b>WT.</b>		<b>SHEET</b> 1 OF 1	
<small>THE FASTENER PARTS SHOWN IN THIS PRINT ARE PROPRIETARY ARTICLES TO WHICH DFCI SOLUTIONS INC. RETAINS THE EXCLUSIVE RIGHTS OF MANUFACTURE, USE AND SALE. THE PRINT OR DRAWING IS SUBMITTED IN CONFIDENCE AND DOES NOT CONVEY A LICENSE OR PERMISSION TO MANUFACTURE THE FASTENER OR FASTENER PARTS.</small>		<b>NEXT ASSY</b> <b>USED ON</b>		<b>MFG</b> <i>B. Kilduff</i> <b>DATE</b> 5-28-09		<b>SALES</b>		<b>DATE</b> 5/28/09			
<small>DATE: 07/01/06    FORM: DRAWING</small>		<b>APPLICATION BLOCK</b>									

The parts shown in this print are proprietary articles to which DFCI Solutions, Inc. retains the exclusive rights of manufacture, use and sale. The print or drawing is submitted in confidence and does not convey a license or permission to manufacture the parts. Copyright © 2009 by DFCI Solutions, Inc. All rights reserved.