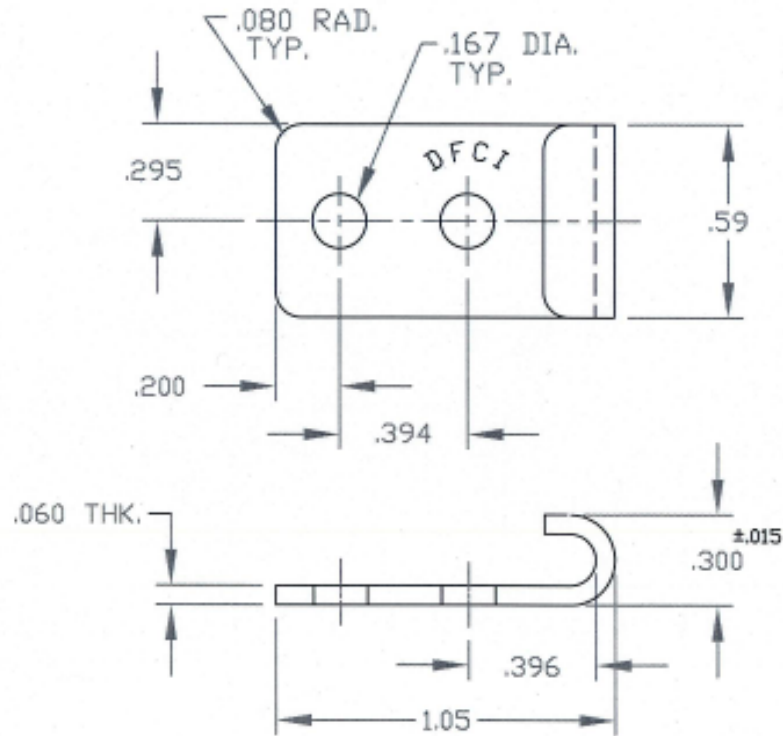



UNCONTROLLED

C7882-C2 SHT. 1of2 REV. *B*

REVISIONS			
SYM	DESCRIPTION	DATE	APPROV
B	CHNG FINISH PER ECN 994	10-24-06	<i>R. OLSEN</i>



FOR PART NO. REFER TO SHT. 2of2.

MAT'L AS NOTED.	TOLERANCES ON DIMENSIONS UNLESS OTHERWISE SPECIFIED X* = ±2* .XX = ±.015 X/X = ±1/32 .XXX = ±.010		MACHINE FINISH <i>125T</i>		 DFCI SOLUTIONS INC. 425 UNION BOULEVARD WEST ISLIP, NEW YORK 11795	
HEAT TREAT NONE.	PART NO.	DRN <i>S. F. Rados</i>	DATE <i>2-2-04</i>	TITLE TL-7800 LINE LATCH, 7882-C2-Z3CT.		
FINISH PER NOTE 1.		CHK <i>F. Baird</i>	DATE <i>10/24/06</i>	SIZE A	FSCM NO 72794	
<small>THE FASTENER PARTS SHOWN IN THIS PRINT ARE PROPRIETARY ARTICLES TO WHICH DFCI SOLUTIONS, INC. RETAINS THE EXCLUSIVE RIGHTS OF MANUFACTURE, USE AND SALE. THE PRINT OR DRAWING IS SUBMITTED IN CONFIDENCE AND DOES NOT CONVEY A LICENSE OR PERMISSION TO MANUFACTURE THE FASTENER OR FASTENER PARTS.</small> <small>© COPYRIGHT 2000, DFCI SOLUTIONS, INC. ALL RIGHTS RESERVED.</small>		ENG <i>R. OLSEN</i>	DATE <i>10/24/06</i>	DWG. NO. C7882-C2	REV. B	
	NEXT ASSY	USED ON	QC <i>B. Hildner</i>	DATE <i>10/24/06</i>	SCALE NTS	WT.
DATE: 07/01/06	FORM: DRAWING	APPLICATION BLOCK	SALES	DATE	SHEET 1 OF 2	

The parts shown in this print are proprietary articles to which DFCI Solutions, Inc. retains the exclusive rights of manufacture, use and sale. The print or drawing is submitted in confidence and does not convey a license or permission to manufacture the parts. Copyright © 2006 by DFCI Solutions, Inc. All rights reserved.


UNCONTROLLED

REVISIONS			
SYM	DESCRIPTION	DATE	APPROV
B	CHNG. FINISH PER ECN 994	10-24-06	<i>ROBERSON</i>

NOTES:

- FINISH:
ZINC PLATE PER ASTM-B-633, TYPE III, SC 2, CLEAR TRIVALENT CHROMATE WITH SEALER. (RoHS COMPLIANT) FINISH SUFFIX: -Z3CT
THE ABOVE MENTIONED FINISH WILL BE SUPPLIED AS THE STANDARD FINISH, UPON DEPLETION OF EXISTING STOCK WHICH ARE FINISHED AS FOLLOWS: ZINC PLATE PER ASTM-B-633, TYPE II, SC 2, YELLOW CHROMATE. FINISH SUFFIX -Z3Y.
- FOR THE APPLICATION OF ALTERNATIVE FINISHES, REMOVE SUFFIX -Z3CT FROM THE PART NO. AND ADD THE REQUIRED FINISH TO THE PART NO. SUFFIX. *EXAMPLE FOR YELLOW ZINC TRIVALENT CHROMATE FINISH, THE PART NO. IS 7882-C2-Z3YT.
- PLEASE VISIT WWW.DFCIS.COM/C7882-C2 FOR A LIST OF AVAILABLE FINISHES.

PART NO.	MATERIAL
7882-C2-Z3CT	PER A.I.S.I 1008/1010 STEEL
7882-C2-SS	TYPE 302 STAINLESS STEEL

MATL AS NOTED.		TOLERANCES ON DIMENSIONS UNLESS OTHERWISE SPECIFIED X = ±2* .XX = ±.015 X/X = ±1/32 .XXX = ±.010 MACHINE FINISH 125T		 DFCI SOLUTIONS INC. 425 UNION BOULEVARD WEST ISLIP, NEW YORK 11795	
HEAT TREAT NONE.		PART NO.	DRN <i>S. F. Roncus</i> DATE 2-2-04	TITLE TL-7800 LINE LATCH, 7882-C2-Z3CT	
FINISH PER NOTE 1.		CHK <i>F. Basch</i> DATE 10-24-06	ENG <i>R. ROBERSON</i> DATE 10/24/06	SIZE A	FSCM NO 72794
<small>THE FASTENER PARTS SHOWN IN THIS PRINT ARE PROPRIETARY ARTICLES TO WHICH DFCI SOLUTIONS INC. RETAINS THE EXCLUSIVE RIGHTS OF MANUFACTURE, USE AND SALE. THE PRINT OR DRAWING IS SUBMITTED IN CONFIDENCE AND DOES NOT CONVEY A LICENSE OR PERMISSION TO MANUFACTURE THE FASTENER OR FASTENER PARTS.</small>		MFG DATE 10/24/06	OC <i>R. ROBERSON</i> DATE 10/24/06	DWG. NO. C7882-C2	REV. B
DATE: 07/01/06 FORM: DRAWING		NEXT ASSY	USED ON	SCALE NTS	WT.
APPLICATION BLOCK		SALES	DATE	SHEET 2 OF 2	