

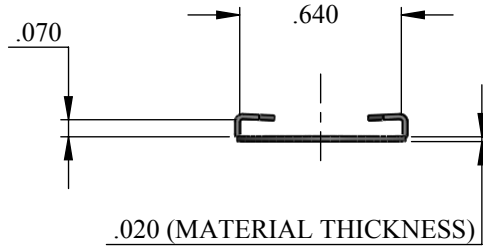
NOTES.

1. FOR THE APPLICATION OF ALTERNATIVE FINISHES, REMOVE SUFFIX Z3CT FROM THE PART NUMBER AND ADD THE REQUIRED FINISH TO THE PART NUMBER. EXAMPLE: FOR YELLOW ZINC TRIVALENT CHROMATE FINISH, THE PART NUMBER WILL BE 8415-01-Z3YT. PLEASE VISIT WWW.DFCIS.COM/C8415-1 FOR A LIST OF AVAILABLE FINISHES.

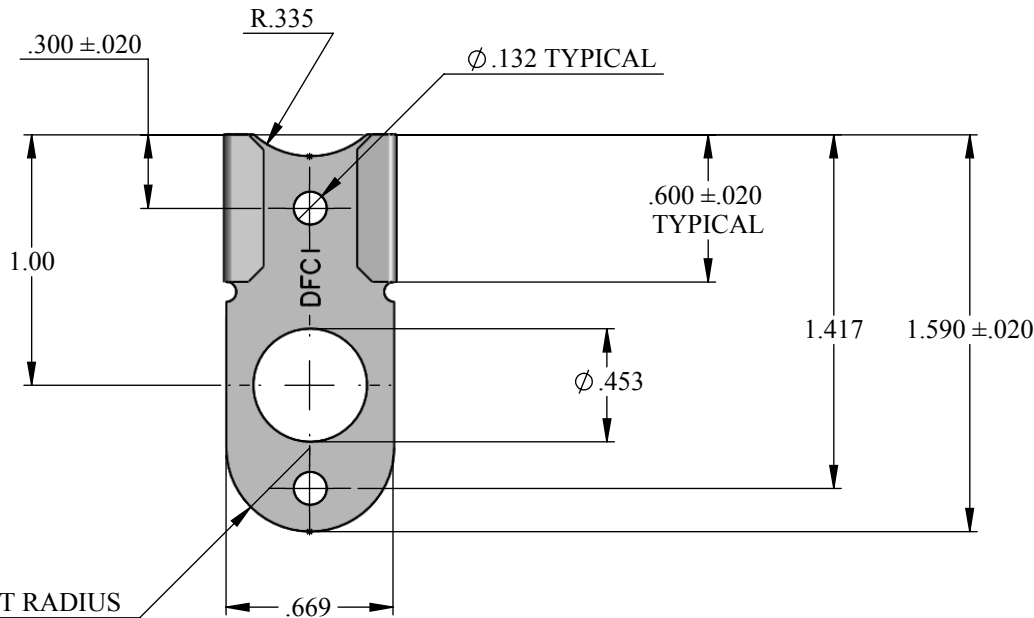
REVISIONS

| SYS | DESCRIPTION | DATE | APPROV |
|-----|--------------|----------|--------|
| B | PER ECN 1168 | 07-11-12 | |

UNCONTROLLED



| PART NUMBER | MATERIAL | FINISH |
|--------------|--------------------------|--|
| 8415-01-Z3CT | 1070-1075 STEEL | ZINC PLATE PER ASTM-B-633, TYPE III, SC2, CLEAR TRIVALENT CHROMATE WITH SEALER (SEE NOTE 1 FOR ALTERNATE FINISHES) |
| 8415-01-SS | TYPE 302 STAINLESS STEEL | NONE |



MATERIAL: SEE TABLE

HEAT TREAT: STEEL BASE ONLY: ROCKWELL C43 - 48

FINISH: SEE TABLE

THE FASTENER PARTS SHOWN IN THIS PRINT ARE PROPRIETARY ARTICLES TO WHICH DFCI SOLUTIONS INC., RETAINS THE EXCLUSIVE RIGHTS OF MANUFACTURE, USE AND SALE. THE PRINT OR DRAWING IS SUBMITTED IN CONFIDENCE AND DOES NOT CONVEY A LICENSE OR PERMISSION TO MANUFACTURE THE FASTENER OR FASTENER PARTS.

(C) COPYRIGHT 2009, DFCI SOLUTIONS INC. ALL RIGHTS RESERVED.

TOLERANCES ON DIMENSIONS UNLESS OTHERWISE SPECIFIED

X* = ±2% .XX = ±.015
X/X = ±1/32 .XXX = ±.010

MACHINE FINISH = 125/7

| PART NO. | DRN | DATE |
|-------------------|----------------------|---------------|
| SEE TABLE | Frank Basile | 07-11-12 |
| | CHK. Frank Basile | DATE 07-11-12 |
| | ENG. Peter Altabrand | DATE 07-11-12 |
| | MFG. Radu Irbarn | DATE 07-11-12 |
| | G.C. Peter Altabrand | DATE 07-11-12 |
| NEXT ASSY | USED ON | SALES. |
| APPLICATION BLOCK | | |



DFCI SOLUTIONS INC.

425 UNION BOULEVARD.
WEST ISLIP, NEW YORK 11795

TITLE: SL-8400 SLIDE LATCH BASE
8415-01-****

SIZE: A FSCM NO: 72794 DWG. NO: C8415-1 REV. B

SCALE: NTS

WEIGHT:

SHEET 1 OF 1