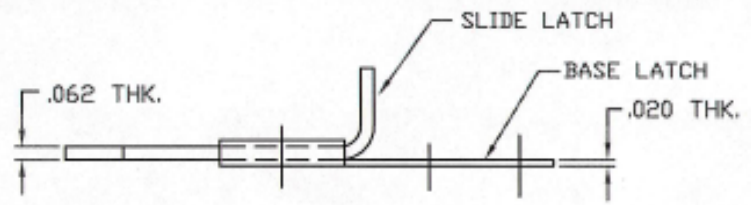
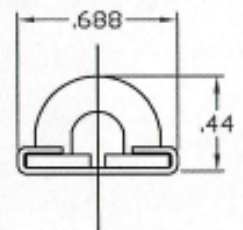
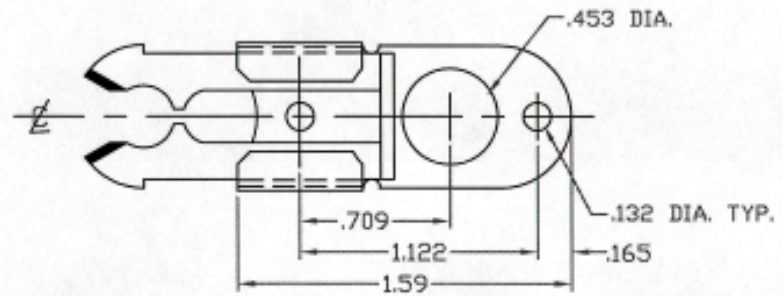


UNCONTROLLED

C8415-241701 REV. A

NOTES UNLESS OTHERWISE SPECIFIED  
 1. REMOVE ALL BURRS & BREAK SHARP CORNERS  
 2. ALL CORNERS & FILLETS .005 MAX.

REVISIONS			
SYM	DESCRIPTION	DATE	APPROV
A	INITIAL RELEASE PER ECN 845	10-14-03	R.OLBSON



SLIDE LATCH ASSY. 'REVERSE BASE'  
 ( SEE NOTE 3 )

ASSY.  
 PART NO.  
 8415-241701

NOTES:  
 3. THIS IS A REVERSE BASE LATCH MOUNTED ASSY. THE SLIDE SHOULD BE INSTALLED INTO BASE AS SHOWN.

MAT'L C1070 - C1075 STEEL PER AMS-5120. HEAT TREAT ROCKWELL C43 - 47 FINISH ZINC PLATE PER ASTM-B-833, TYPE II, SC 2, YELLOW CHROMATE		TOLERANCES ON DIMENSIONS UNLESS OTHERWISE SPECIFIED X* = ±2* .XX = ±.015 CONCENTRICITY F.I.M. .005 X/X = ±1/32 .XXX = ±.010 MACHINE FINISH 125/		DFCI SOLUTIONS INC. 425 UNION BOULEVARD WEST ISLIP, NEW YORK 11795	
PART NO.		DRN S. FRANCO 10-14-03 CHK F. BASIL 10-14-03 ENG R. OLSON 10/14/03 MFG J. S. JS 10-14-03 QC R. H. R. H. 10-14-03		TITLE SL-8400 LINE LATCH ASSY. 8415-241701	
NEXT ASSY USED ON		APPLICATION BLOCK SALES		SIZE A	FSCM NO 72794
DATE		DATE		DWG. NO. C8415-241701	REV. A
DATE		DATE		SCALE NTS	WT.
DATE		DATE		SHEET 1 OF 1	

FORM DF-EN-003