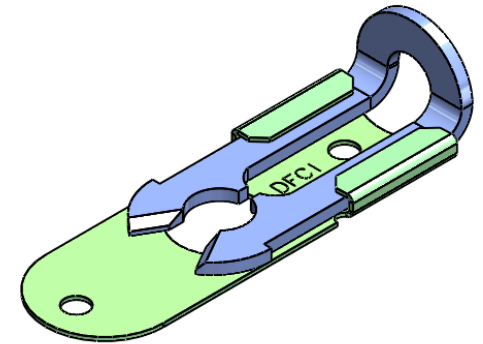
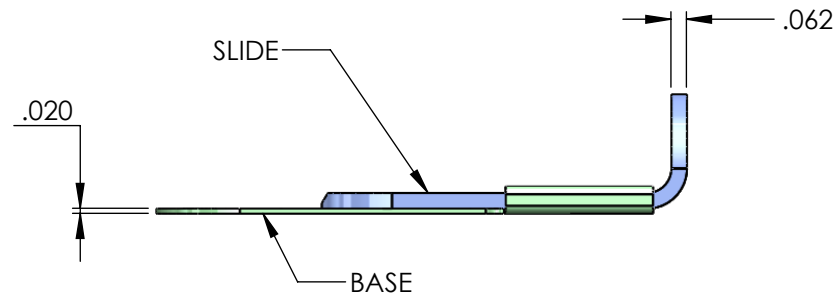
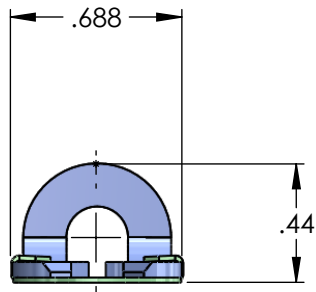
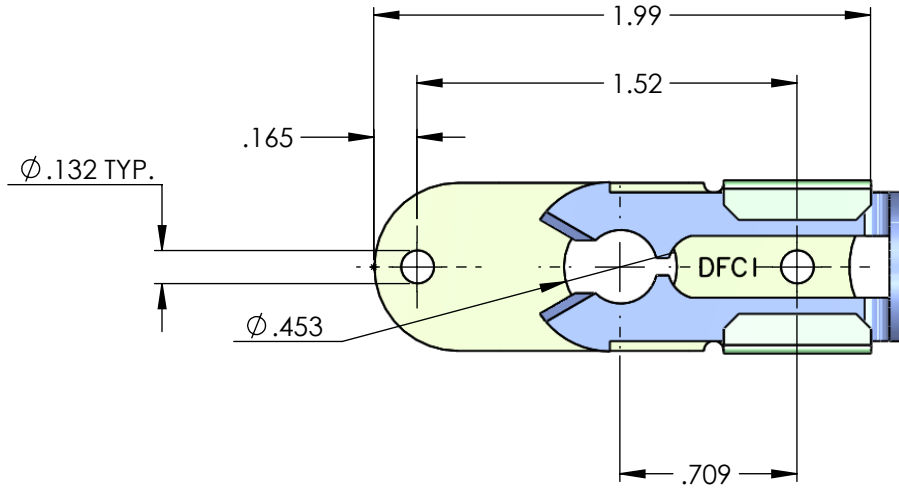


# UNCONTROLLED

REVISIONS			
SYS	DESCRIPTION	DATE	APPROV
/	INITIAL RELEASE	10/29/13	



MATERIAL:	TYPE 302 STAINLESS STEEL
HEAT TREAT:	NONE
FINISH:	BLACK OXIDE PER MIL-C-13924 CLASS 4
<small>THE FASTENER PARTS SHOWN IN THIS PRINT ARE PROPRIETARY ARTICLES TO WHICH DFCI SOLUTIONS INC., RETAINS THE EXCLUSIVE RIGHTS OF MANUFACTURE, USE AND SALE. THE PRINT OR DRAWING IS SUBMITTED IN CONFIDENCE AND DOES NOT CONVEY A LICENSE OR PERMISSION TO MANUFACTURE THE FASTENER OR FASTENER PARTS.</small>	
<small>(C) COPYRIGHT 2009, DFCI SOLUTIONS INC. ALL RIGHTS RESERVED.</small>	

TOLERANCES ON DIMENSIONS UNLESS OTHERWISE SPECIFIED			
X° = ±2°	.XX = ±.015	MACHINE FINISH = .125	
X/X = ±1/32	.XXX = ±.010		
PART NO.	8415-241900-SS-BOF	DRN	DATE
		CHK.	DATE
		ENG.	DATE
		MFG.	DATE
		Q.C.	DATE
		SALES.	DATE
NEXT ASSY	USED ON	APPLICATION BLOCK	



**DFCI SOLUTIONS INC.**  
425 UNION BOULEVARD.  
WEST ISLIP, NEW YORK 11795

**TITLE** SL-8400 SLIDE LATCH (ELONGATED BASE)  
8415-241900-SS-BOF

SIZE	FSCM NO.	DWG. NO.	REV.
A	72794	C8415-241900	/

SCALE: NTS      WEIGHT:      SHEET 1 OF 1