

NOTES.

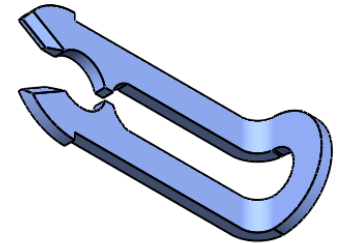
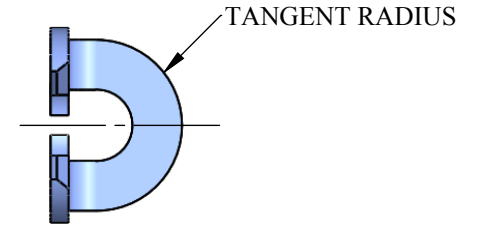
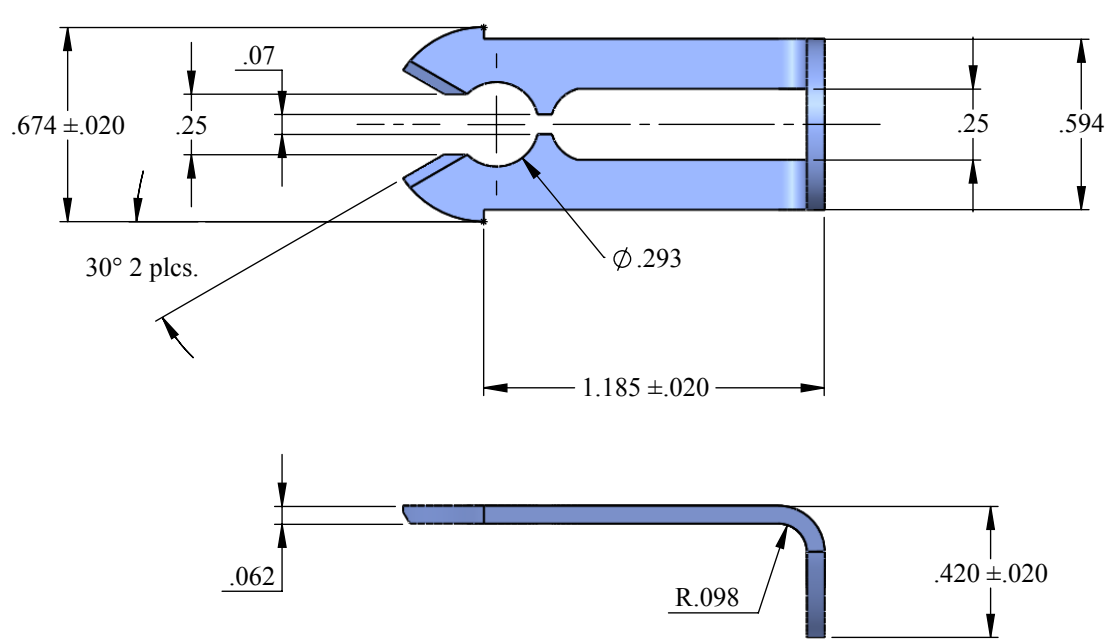
1. FOR THE APPLICATION OF ALTERNATIVE FINISHES, REMOVE SUFFIX Z3CT FROM THE PART NUMBER AND ADD THE REQUIRED FINISH TO THE PART NUMBER.
 EXAMPLE: FOR YELLOW ZINC TRIVALENT CHROMATE FINISH, THE PART NUMBER WILL BE 8415-02-Z3YT.
 PLEASE VISIT WWW.DFCIS.COM/C8415-2 FOR A LIST OF AVAILABLE FINISHES.

REVISIONS

SYS	DESCRIPTION	DATE	APPROV
B	PER ECN 1168	07-11-12	

PART NUMBER	MATERIAL	FINISH
8415-02-Z3CT	1070 - 1075 STEEL	ZINC PLATE PER ASTM-B-633, TYPE III, SC2, CLEAR TRIVALENT CHROMATE WITH SEALER (SEE NOTE 1 FOR ALTERNATE FINISHES)
8415-02-SS	TYPE 302 STAINLESS STEEL	NONE

UNCONTROLLED



MATERIAL:	SEE TABLE
HEAT TREAT:	STEEL HANDLE ONLY: ROCKWELL C43 - 48
FINISH:	SEE TABLE
<small>THE FASTENER PARTS SHOWN IN THIS PRINT ARE PROPRIETARY ARTICLES TO WHICH DFCI SOLUTIONS INC., RETAINS THE EXCLUSIVE RIGHTS OF MANUFACTURE, USE AND SALE. THE PRINT OR DRAWING IS SUBMITTED IN CONFIDENCE AND DOES NOT CONVEY A LICENSE OR PERMISSION TO MANUFACTURE THE FASTENER OR FASTENER PARTS.</small>	
<small>(C) COPYRIGHT 2009, DFCI SOLUTIONS INC. ALL RIGHTS RESERVED.</small>	

TOLERANCES ON DIMENSIONS UNLESS OTHERWISE SPECIFIED			
<small>X* = ±2°</small>		<small>.XX = ±.015</small>	
<small>X/X = ±1/32</small>		<small>.XXX = ±.010</small>	
<small>MACHINE FINISH = 125/7</small>			
PART NO.	SEE TABLE	DRN	DATE
		CHK. <i>Frank Basile</i>	07-11-12
		ENG. <i>Frank Basile</i>	07-11-12
		MFG. <i>Rashm Lubman</i>	07-11-12
		Q.C. <i>Robert Alldorant</i>	07-11-12
		SALES.	DATE
NEXT ASSY	USED ON		
APPLICATION BLOCK			

		DFCI SOLUTIONS INC. 425 UNION BOULEVARD. WEST ISLIP, NEW YORK 11795	
		TITLE: SL-8400 SLIDE LATCH HANDLE 8415-02-****	
SIZE	FSCM NO.	DWG. NO.	REV.
A	72794	C8415-2	B
SCALE: NTS		WEIGHT:	SHEET 1 OF 1