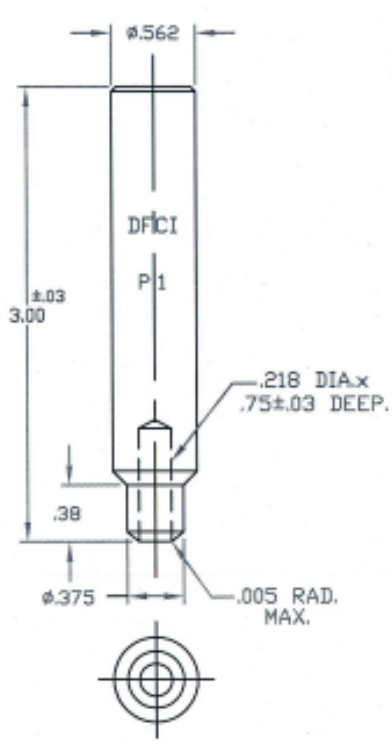


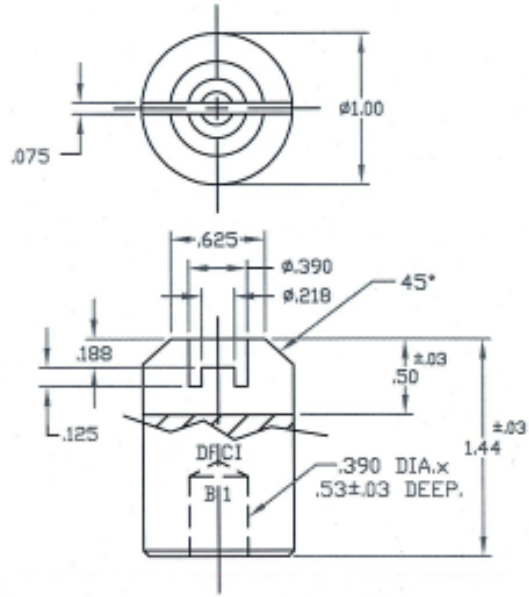
UNCONTROLLED

C9920-AT1767A REV. *A*

REVISIONS			
SYM	DESCRIPTION	DATE	APPROV
A	INITIAL RELEASE	11-8-06	<i>R. OLSEN</i>




PUNCH 1
P/N 9916-1-162035A
(SEE NOTE 3)



BLOCK 1
P/N 9902-1-T1767B
(SEE NOTE 3)

- NOTES:
- MATERIALS:
PUNCH 1: PER A.I.S.I 01 (KETOS STEEL).
BLOCK 1: PER A.I.S.I 1018, 1020 OR 12L14 STEEL.
 - HEAT TREATMENT:
PUNCH 1: ROCKWELL C55.
BLOCK 1: CASE HARDENED.
 - FOR KIT ASSY. OF THESE TWO PARTS, USE PART NO. 9920-1620-35-AT1767A.

MATL PER NOTE 1.	TOLERANCES ON DIMENSIONS UNLESS OTHERWISE SPECIFIED X* = ±.2* .XX = ±.015 X/X = ±1/32 .XXX = ±.010 MACHINE FINISH 125/T		 DFCI SOLUTIONS INC. 425 UNION BOULEVARD WEST ISLIP, NEW YORK 11795	
HEAT TREAT PER NOTE 2.	PART NO.	DRN <i>S. Francis</i>	DATE 11-8-06	TITLE INSTALLATION TOOL SET, 9920-1620-35-AT1767A.
FINISH CLEAN & FREE OF BURRS.		CHK <i>F. Basch</i>	DATE 11-28-06	REV. A
<small>THE FASTENER PARTS SHOWN IN THIS PRINT ARE PROPRIETARY ARTICLES TO WHICH DFCI SOLUTIONS INC. RETAINS THE EXCLUSIVE RIGHTS OF MANUFACTURE, USE AND SALE. THE PRINT OR DRAWING IS SUBMITTED IN CONFIDENCE AND DOES NOT CONVEY A LICENSE OR PERMISSION TO MANUFACTURE THE FASTENER OR FASTENER PARTS. © COPYRIGHT 2003, DFCI SOLUTIONS INC. ALL RIGHTS RESERVED.</small>		ENG <i>R. OLSEN</i>	DATE 11/28/06	SIZE A
		MFG <i>M.A.</i>	DATE 11/28/06	FSCM NO 72794
	NEXT ASSY	USED ON	QC <i>R. Olson</i>	DATE 11/28/06
	APPLICATION BLOCK	SALES	DATE	SCALE NTS
				WT.
				SHEET 1 OF 1

DATE: 07/01/06 FORM: DRAWING